

Sidlesham Infiltration Plan

Appendix A – Status of Planned Actions July 2024



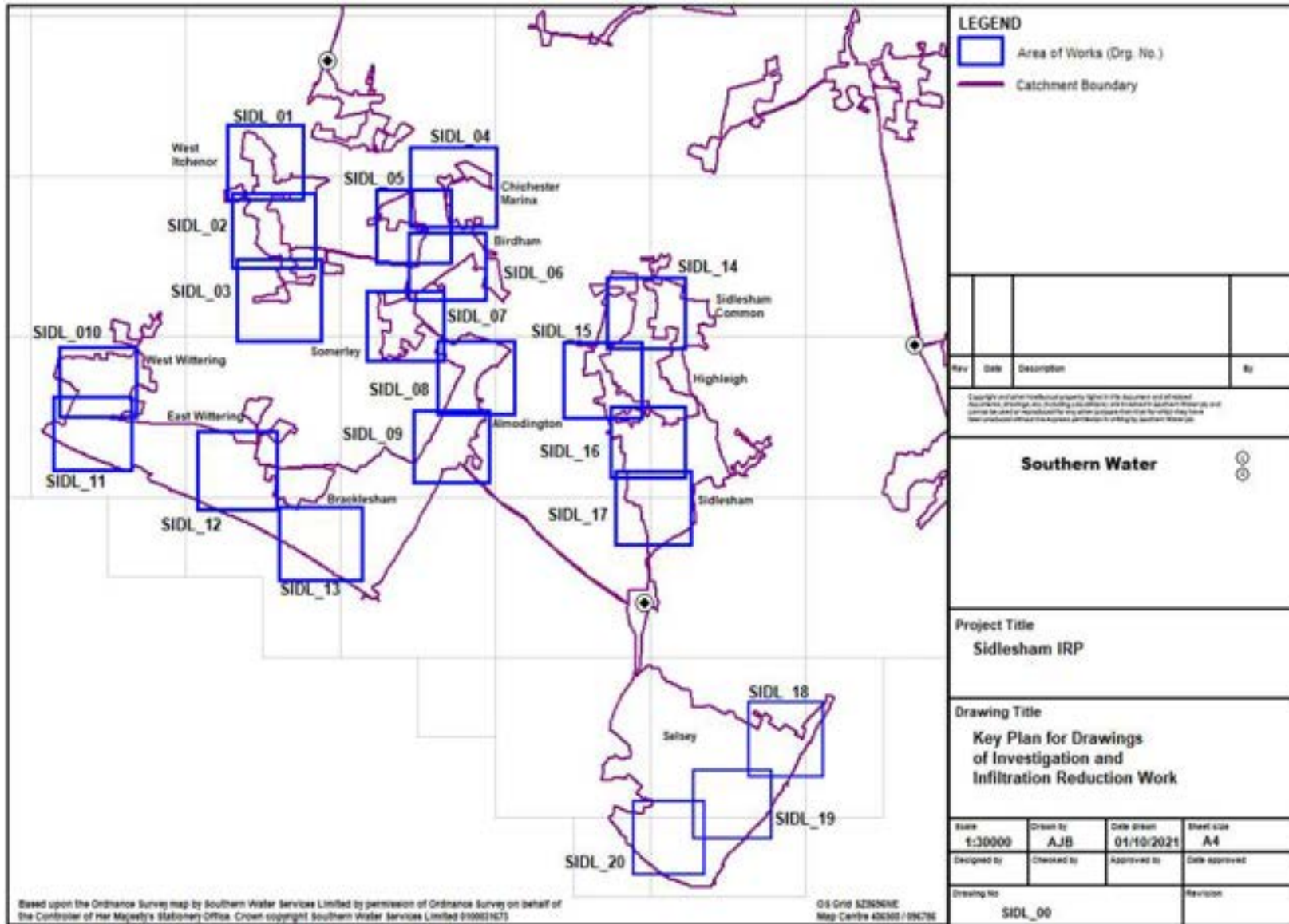
Summary of work completed

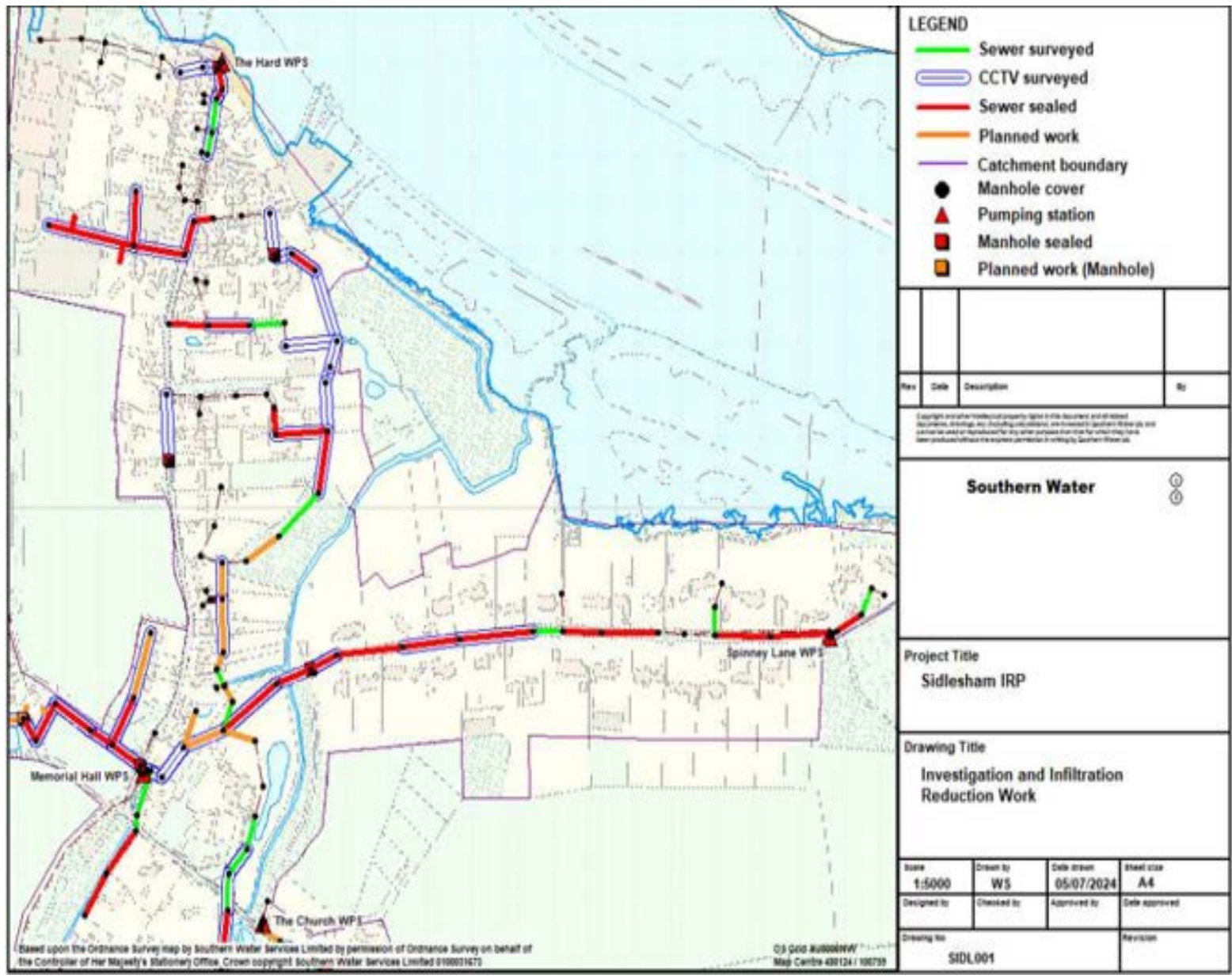
Action	Km of sewer
Length Surveyed by CCTV	54.31
Length Surveyed by Electroscan	8.53
Length with no work required	51.36
Length Sealed	4.71
Length to be sealed	6.77
Manholes sealed	9
Manholes to be sealed	3

Reporting Year	Surveyed (km)	Sewers Sealed (km)	Manholes Sealed
Pre 2014	40.5	0.3	7
2014	0.2	0.2	0
2015	0.2	0.1	0
2016	4.8	0.1	0
2017	3.2	1	0
2018	4.5	0.2	2
2019	0.3	0.6	0
2020	0	0.1	0
2021	0	0m	0
2022	9.1	0.1	0
2023	0	0m	0
2024	0	2	0
Post 2024	0	6.7	3



Reference Plan



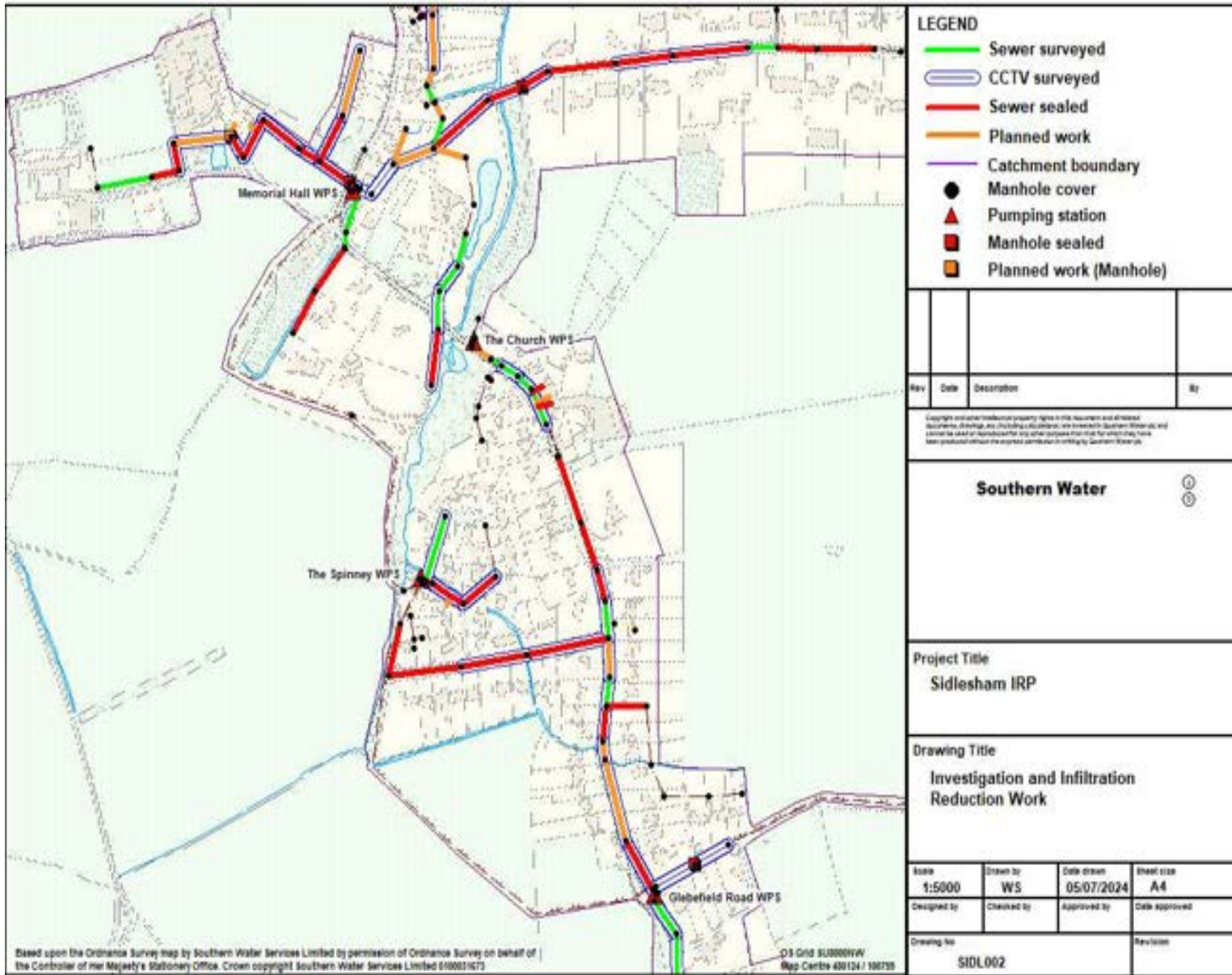


Detailed plan 1

Note – sewers shown as surveyed by cctv or electroscan with no corresponding sealing work have been determined to not require rehabilitation. The use of storm harvester data will be used at some point in the future to target inspections and find infiltration



Detailed plan 2

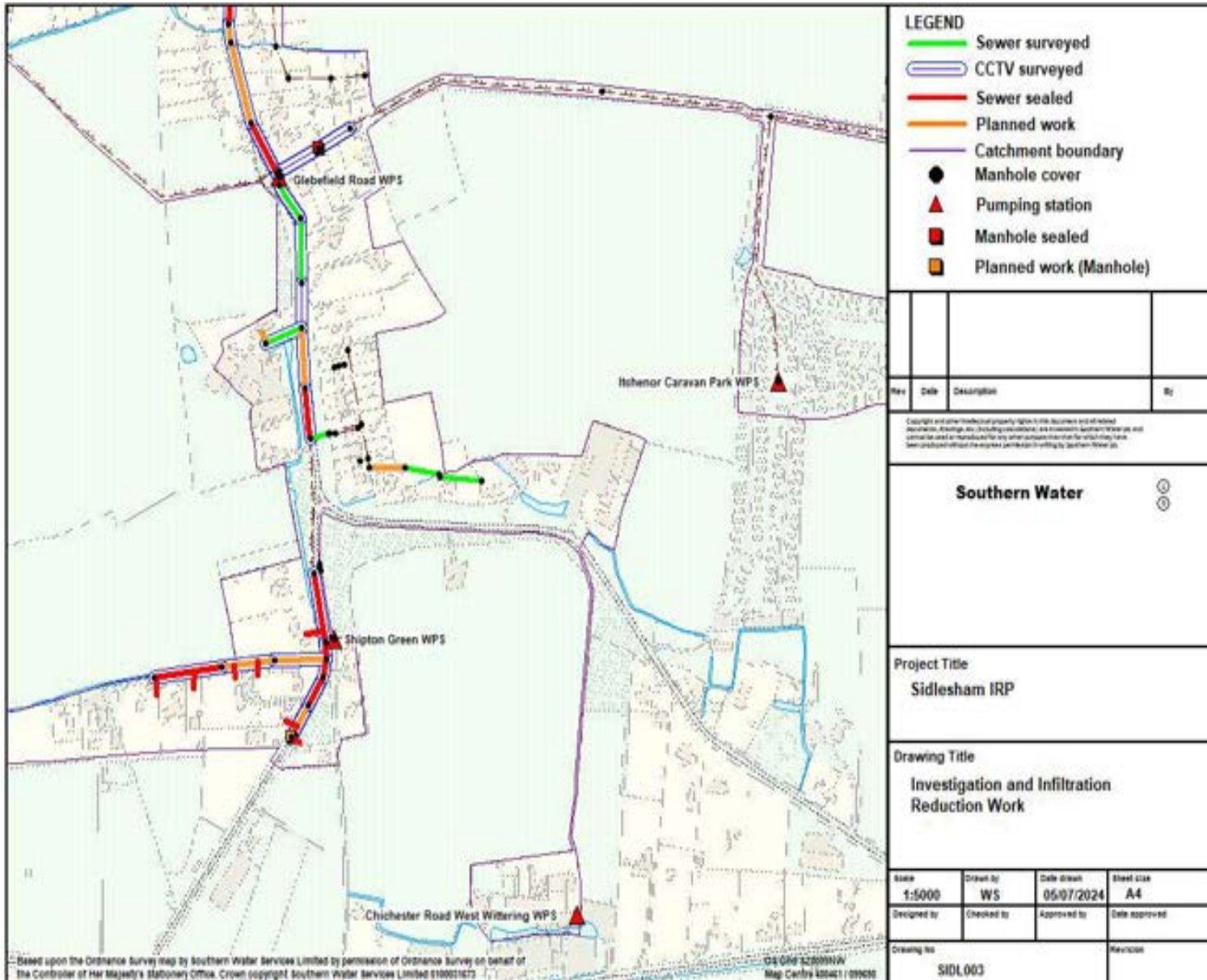


Note – sewers shown as surveyed by cctv or electroscan with no corresponding sealing work have been determined to not require rehabilitation. The use of storm harvester data will be used at some point in the future to target inspections and find infiltration

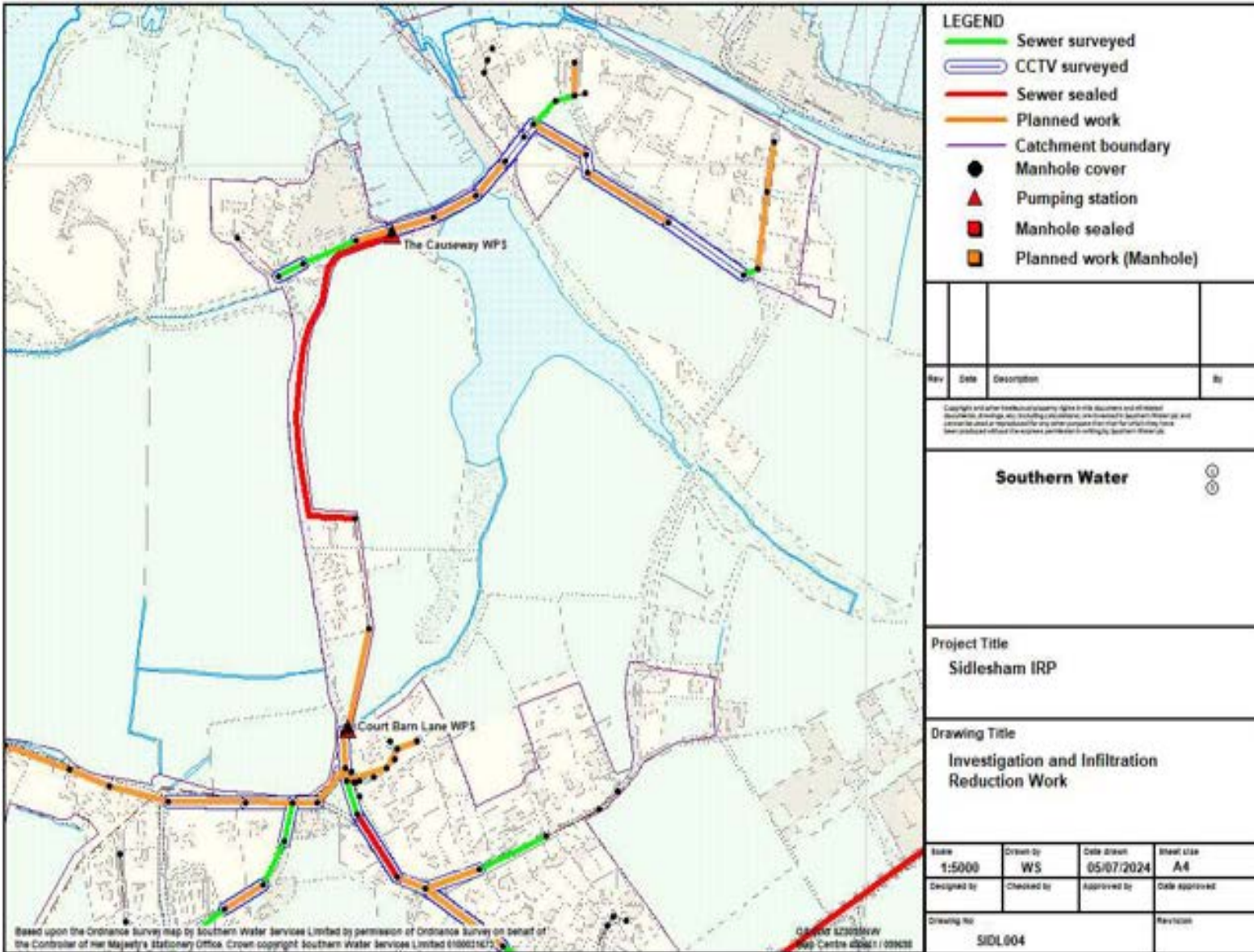


Detailed plan 3

Note – sewers shown as surveyed by cctv or electroscan with no corresponding sealing work have been determined to not require rehabilitation. The use of storm harvester data will be used at some point in the future to target inspections and find infiltration

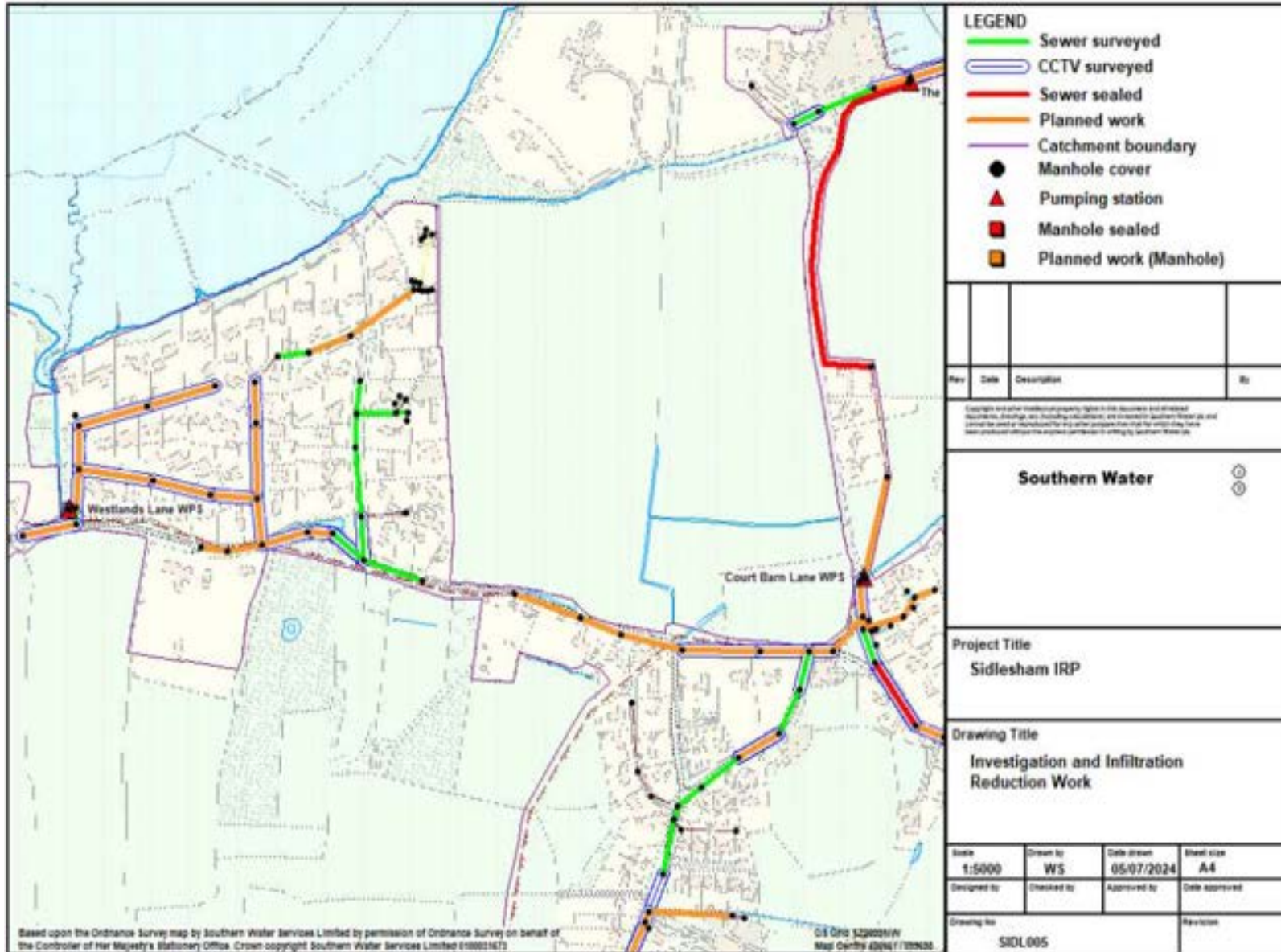


Detailed plan 4



Note – sewers shown as surveyed by cctv or electroscan with no corresponding sealing work have been determined to not require rehabilitation. The use of storm harvester data will be used at some point in the future to target inspections and find infiltration

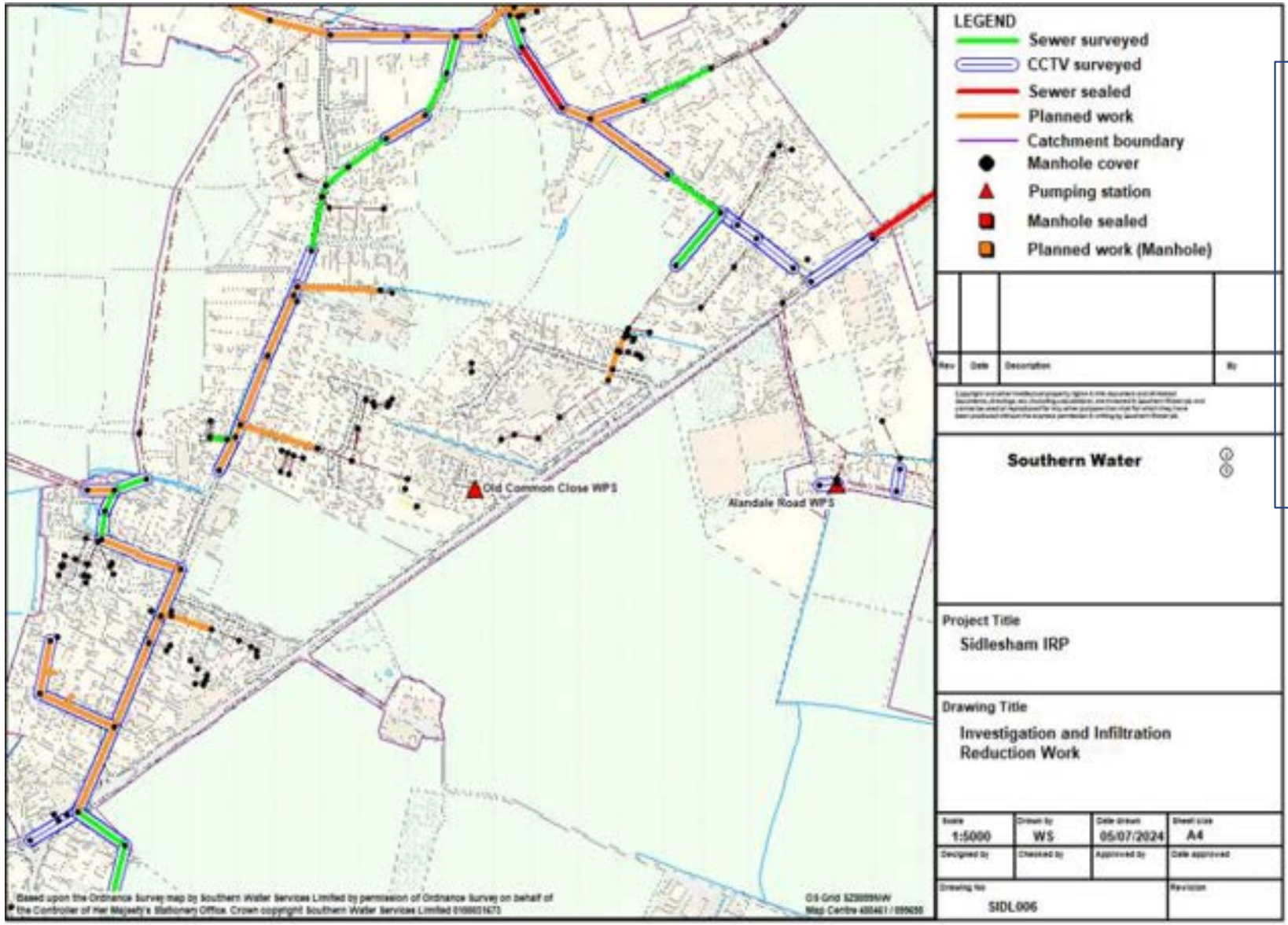




Detailed plan 5

Note – sewers shown as surveyed by cctv or electroscan with no corresponding sealing work have been determined to not require rehabilitation. The use of storm harvester data will be used at some point in the future to target inspections and find infiltration



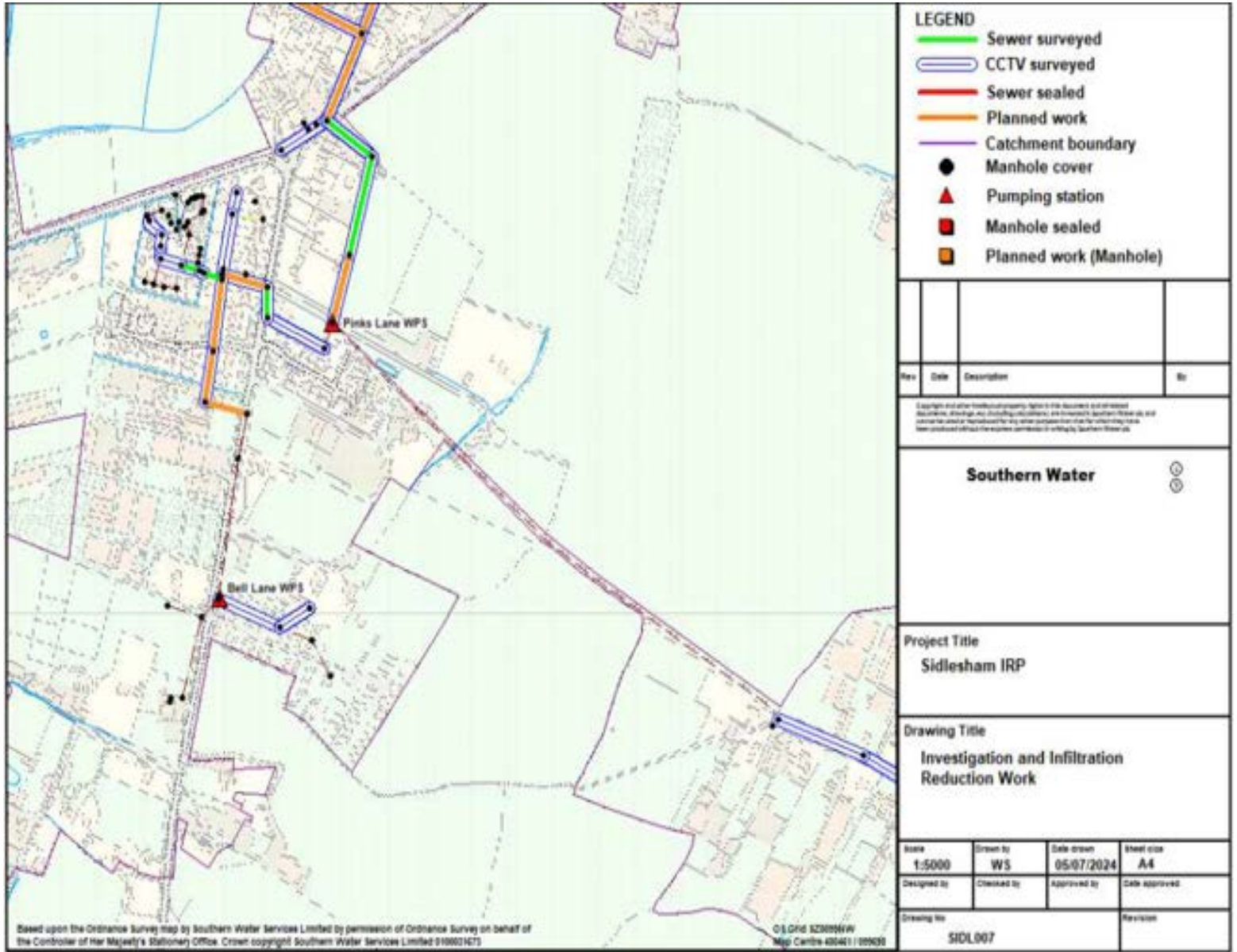


Detailed plan 6

Note – sewers shown as surveyed by cctv or electroscan with no corresponding sealing work have been determined to not require rehabilitation.

The use of storm harvester data will be used at some point in the future to target inspections and find infiltration

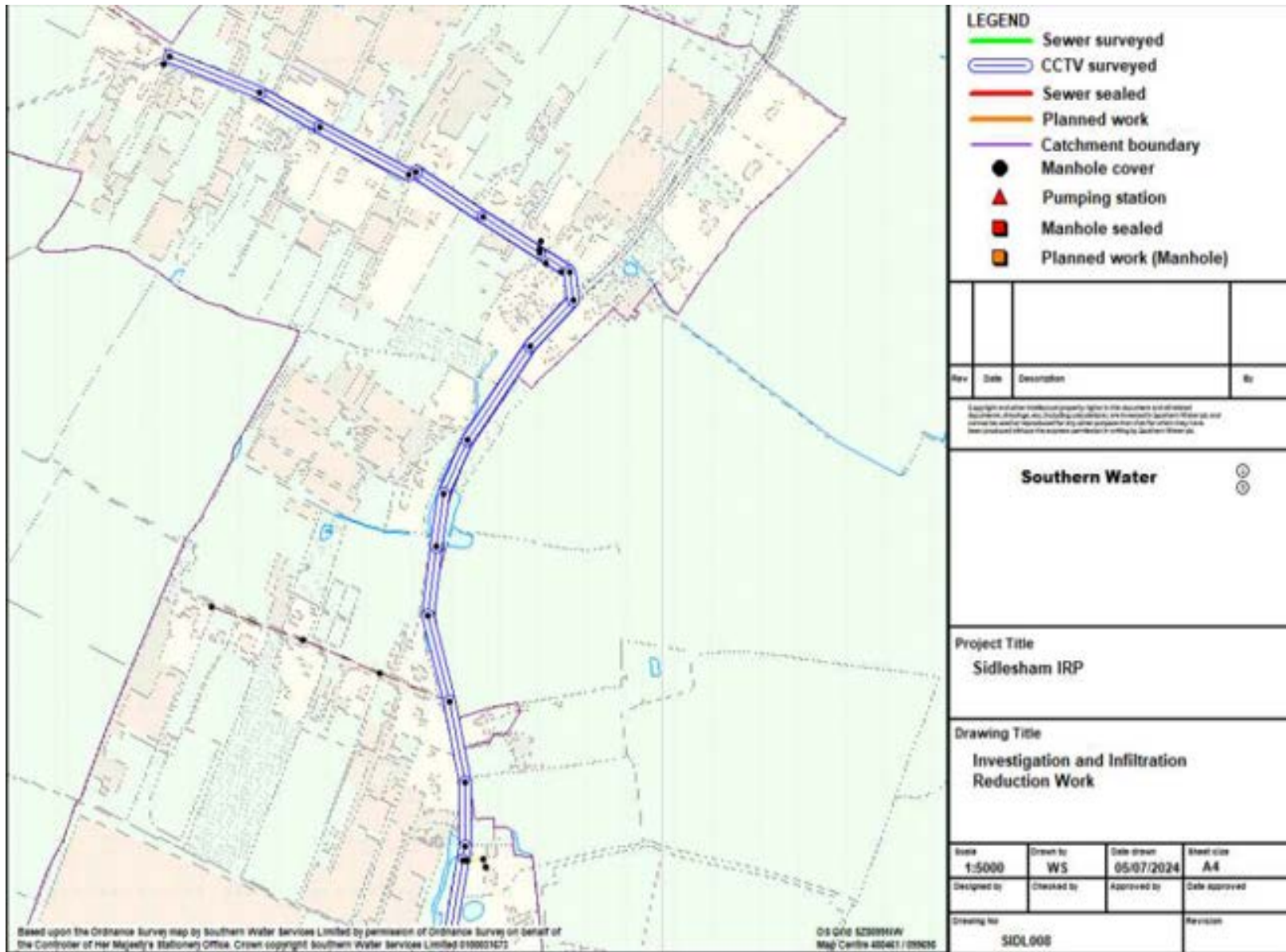




Detailed plan 7

Note – sewers shown as surveyed by cctv or electroscan with no corresponding sealing work have been determined to not require rehabilitation. The use of storm harvester data will be used at some point in the future to target inspections and find infiltration

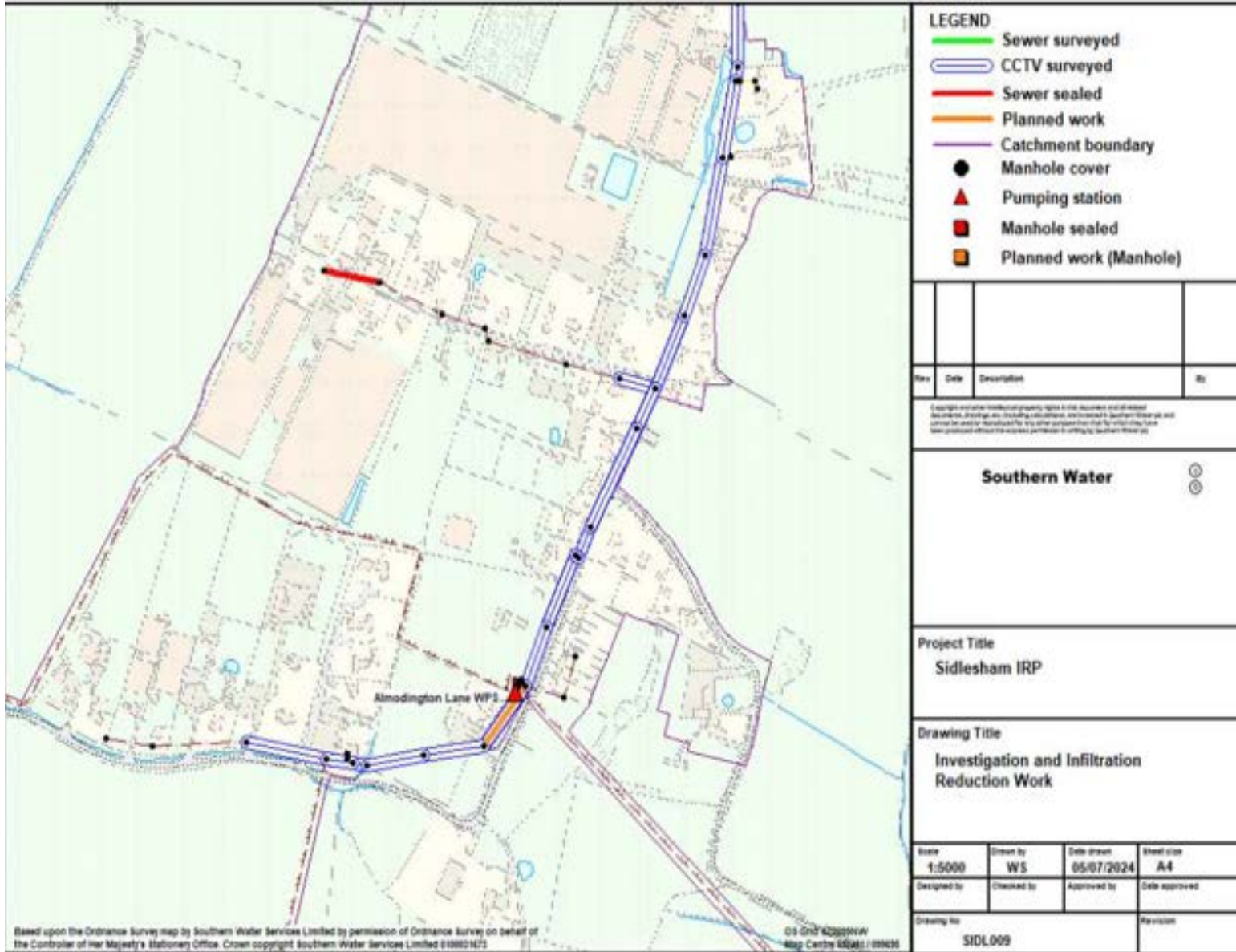




Detailed plan 8

Note – sewers shown as surveyed by cctv or electroscan with no corresponding sealing work have been determined to not require rehabilitation. The use of storm harvester data will be used at some point in the future to target inspections and find infiltration



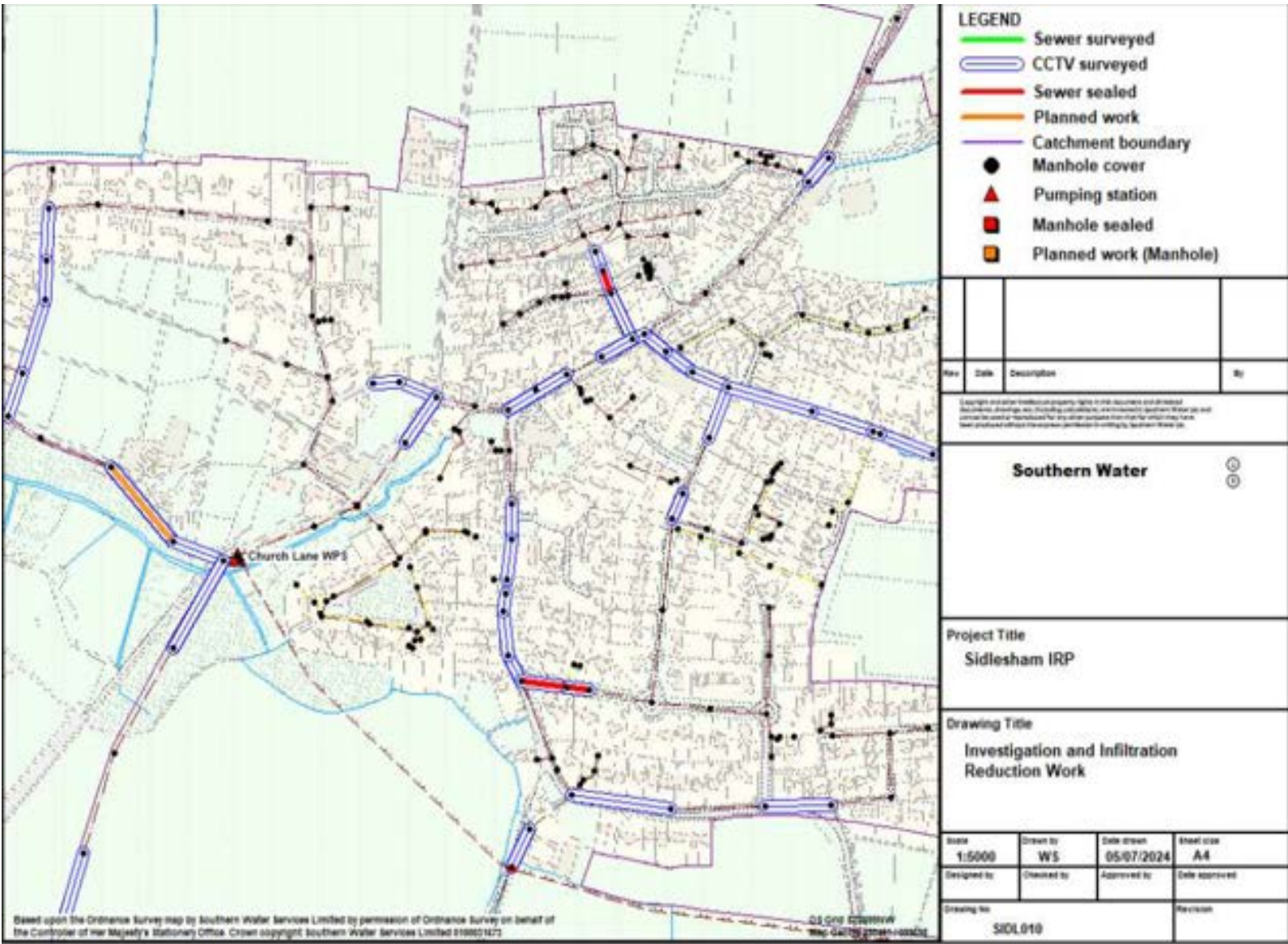


Detailed plan 9

Note – sewers shown as surveyed by cctv or electroscan with no corresponding sealing work have been determined to not require rehabilitation. The use of storm harvester data will be used at some point in the future to target inspections and find infiltration

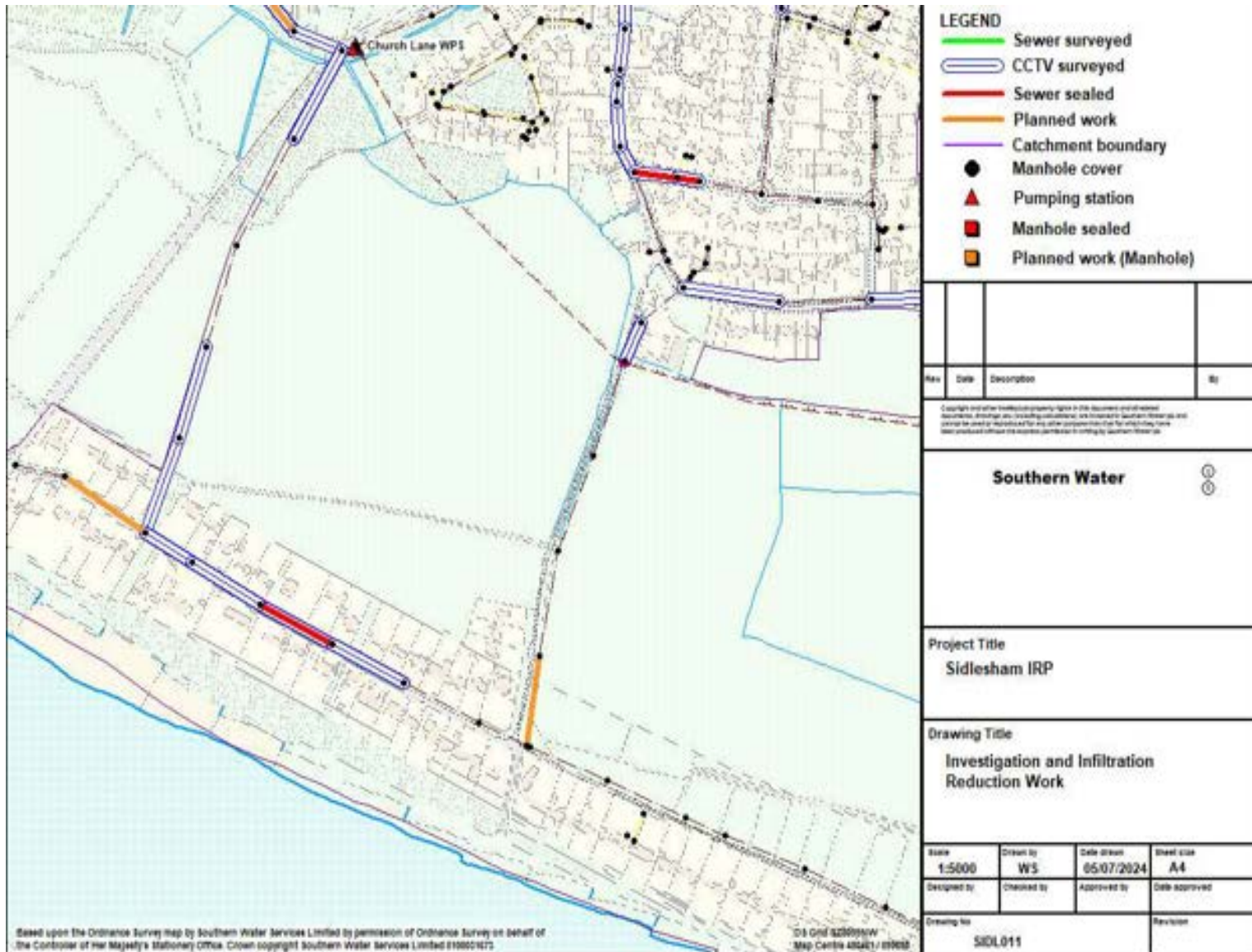


Detailed plan 10



Note – sewers shown as surveyed by cctv or electroscan with no corresponding sealing work have been determined to not require rehabilitation. The use of storm harvester data will be used at some point in the future to target inspections and find infiltration

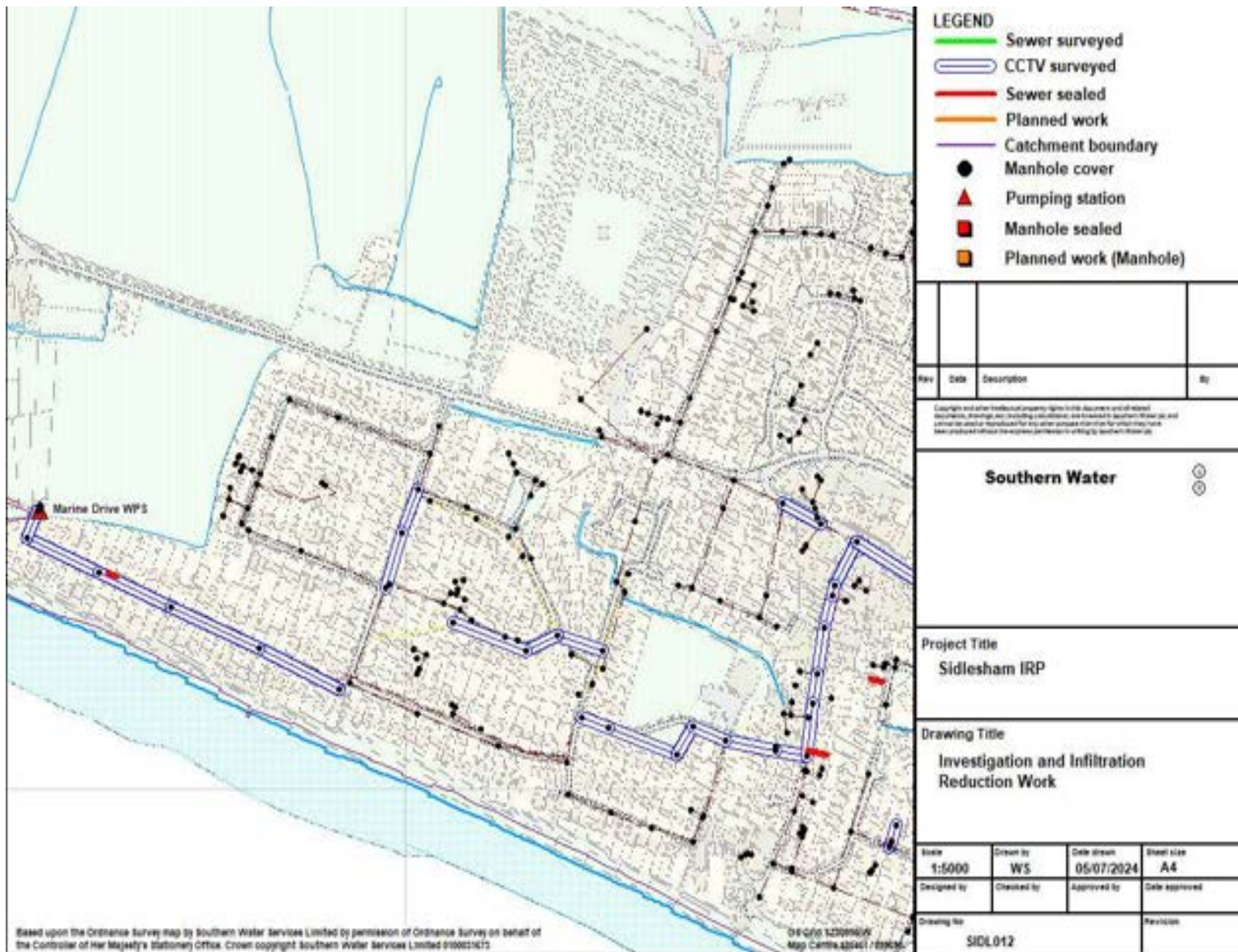




Detailed plan 11

Note – sewers shown as surveyed by cctv or electroscan with no corresponding sealing work have been determined to not require rehabilitation. The use of storm harvester data will be used at some point in the future to target inspections and find infiltration



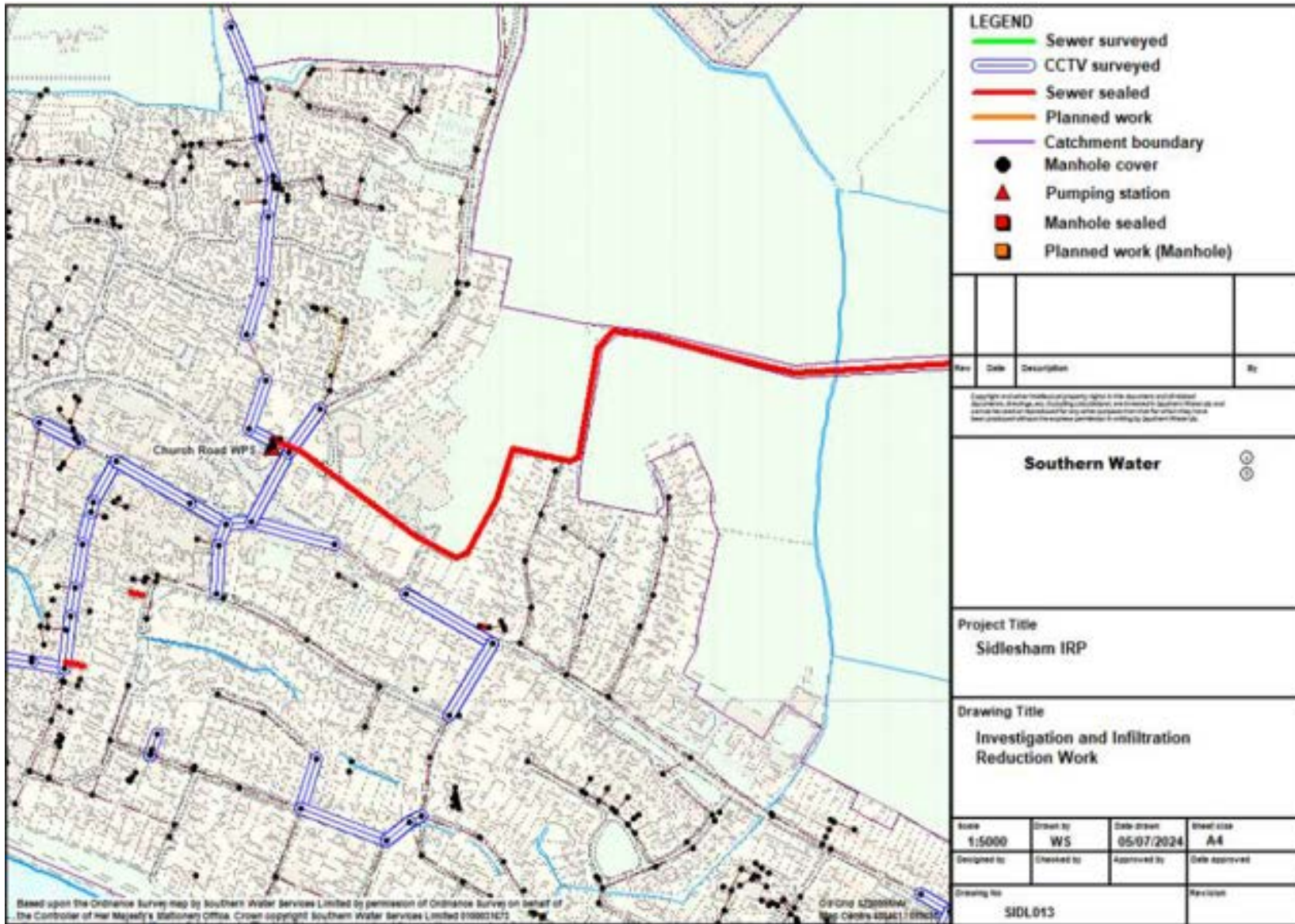


Detailed plan 12

Note – sewers shown as surveyed by cctv or electroscan with no corresponding sealing work have been determined to not require rehabilitation. The use of storm harvester data will be used at some point in the future to target inspections and find infiltration



Detailed plan 13

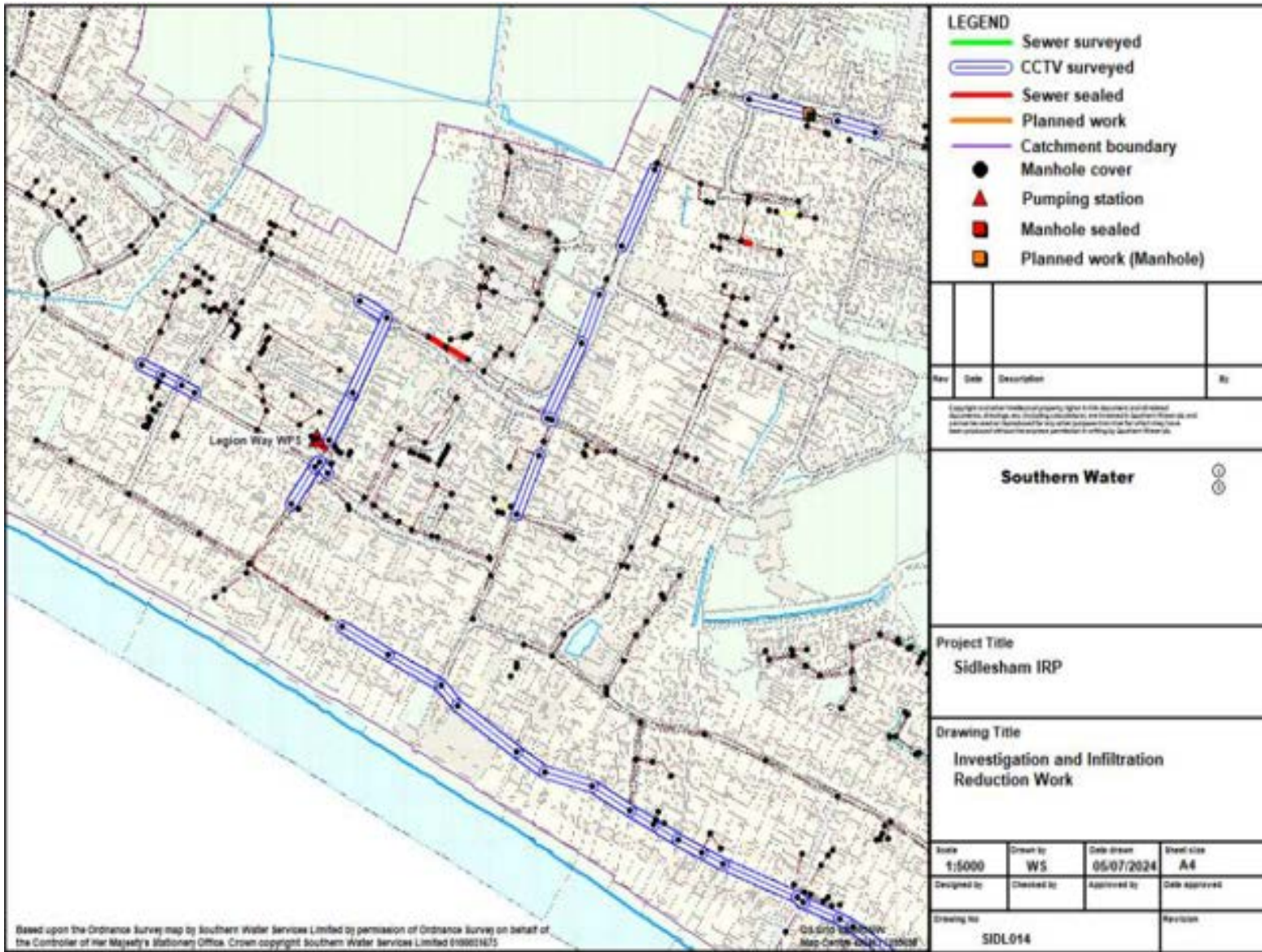


Note – sewers shown as surveyed by cctv or electroscan with no corresponding sealing work have been determined to not require rehabilitation. The use of storm harvester data will be used at some point in the future to target inspections and find infiltration



Detailed plan 14

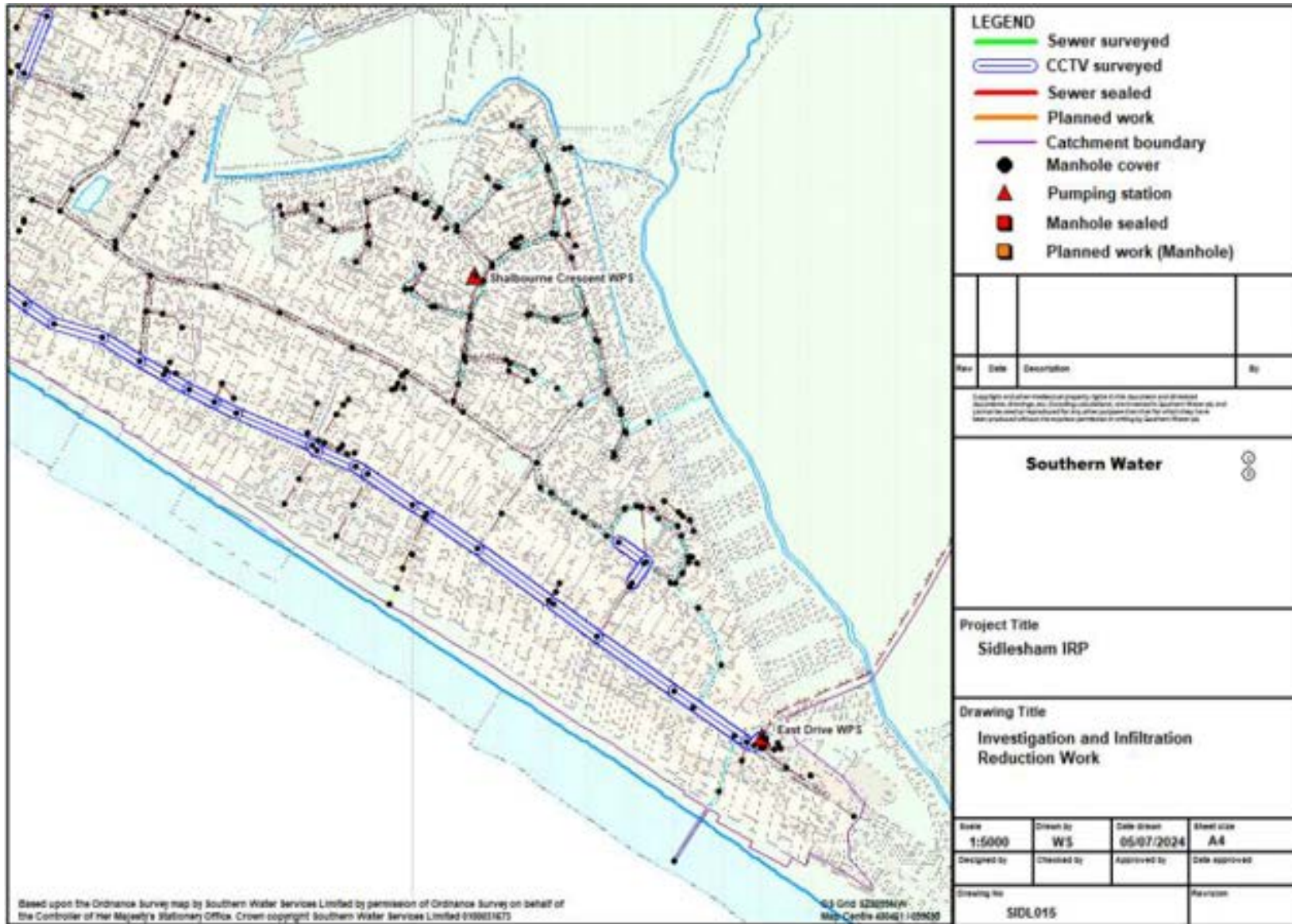
Note – sewers shown as surveyed by cctv or electroscan with no corresponding sealing work have been determined to not require rehabilitation. The use of storm harvester data will be used at some point in the future to target inspections and find infiltration



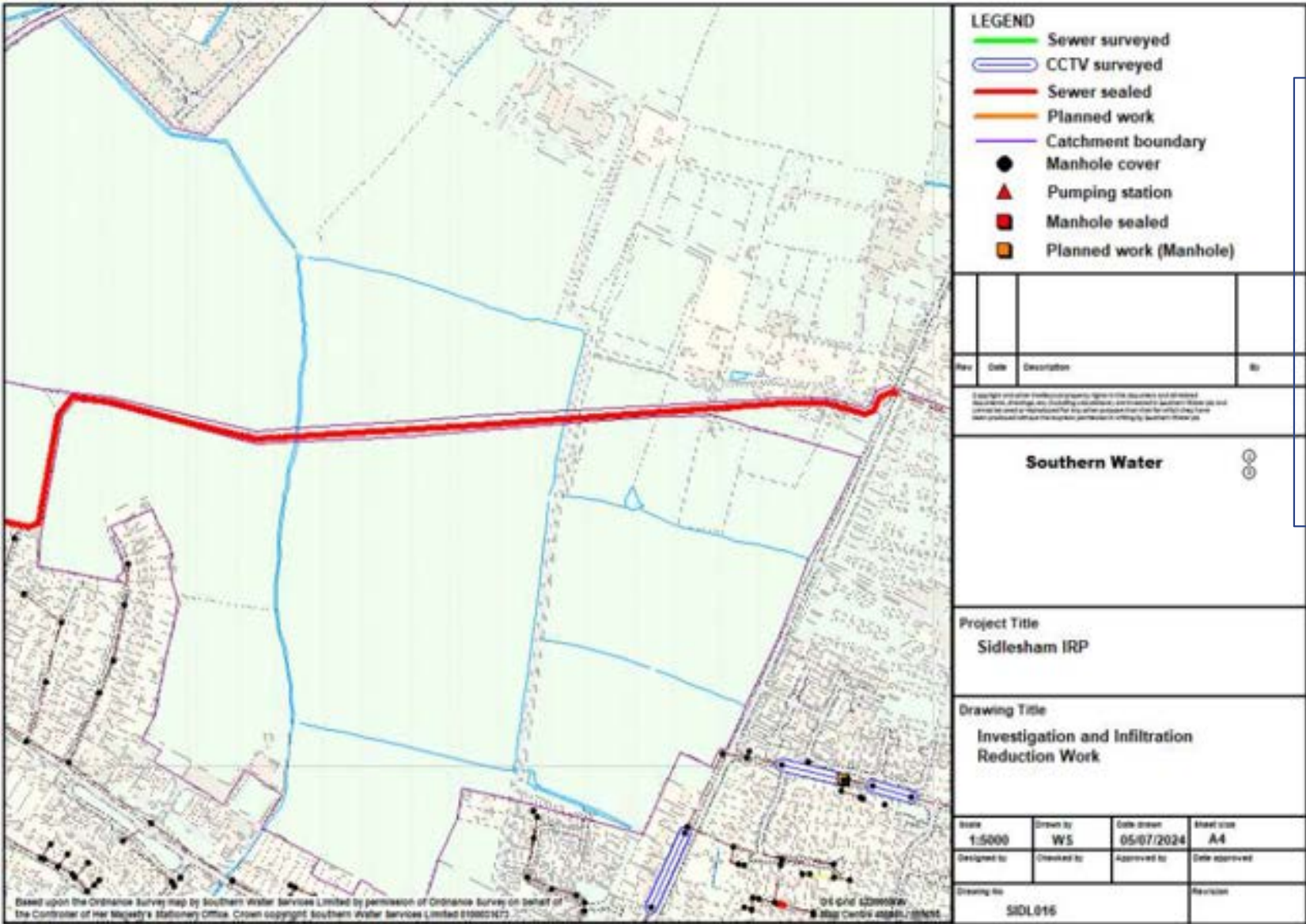
Based upon the Ordnance Survey map by Southern Water Services Limited by permission of Ordnance Survey on behalf of the Controller of Her Majesty's Stationery Office. Crown copyright Southern Water Services Limited 0108012675

Detailed plan 15

Note – sewers shown as surveyed by cctv or electroscan with no corresponding sealing work have been determined to not require rehabilitation. The use of storm harvester data will be used at some point in the future to target inspections and find infiltration



Detailed plan 16

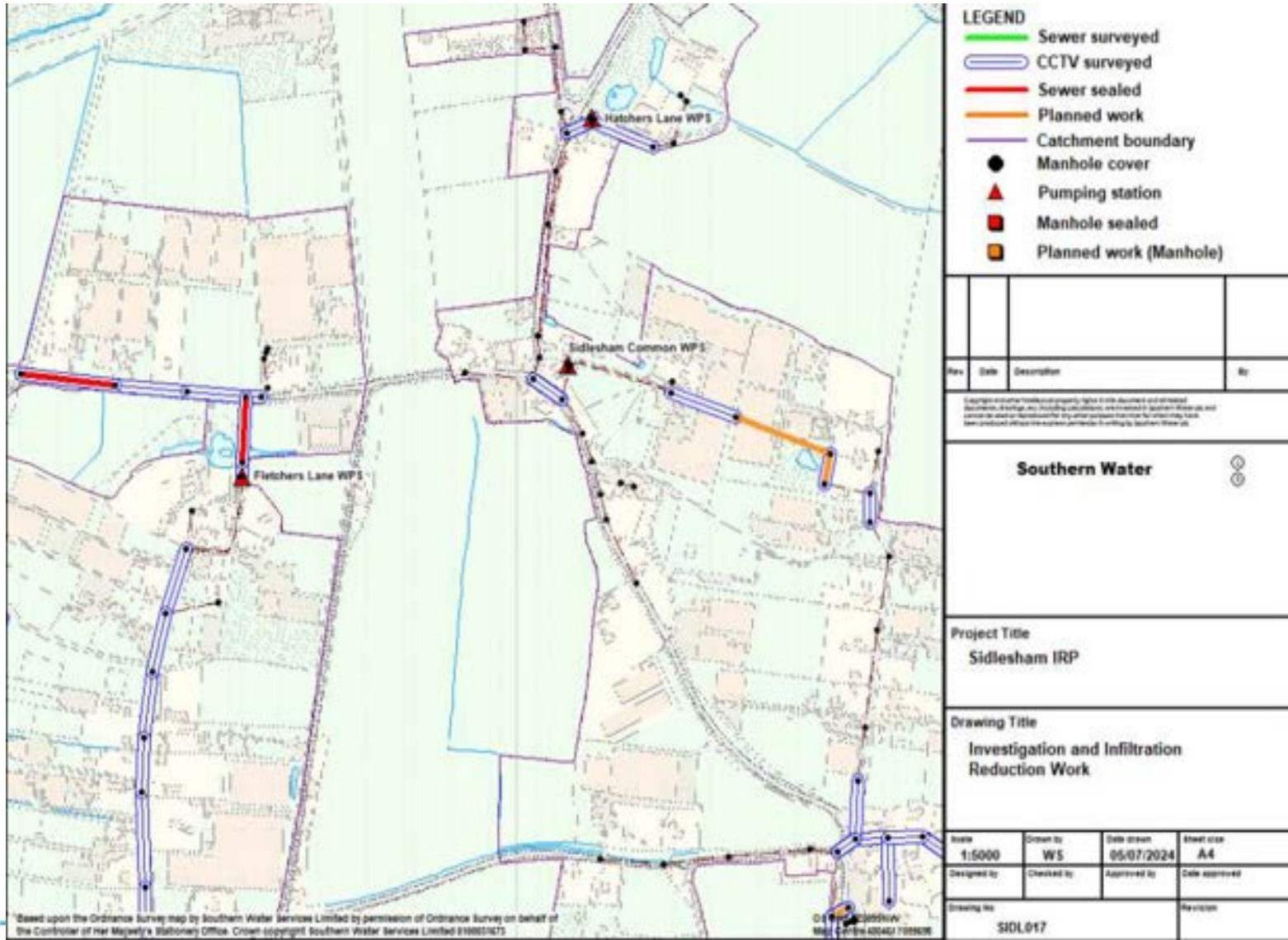


Note – sewers shown as surveyed by cctv or electroscan with no corresponding sealing work have been determined to not require rehabilitation. The use of storm harvester data will be used at some point in the future to target inspections and find infiltration



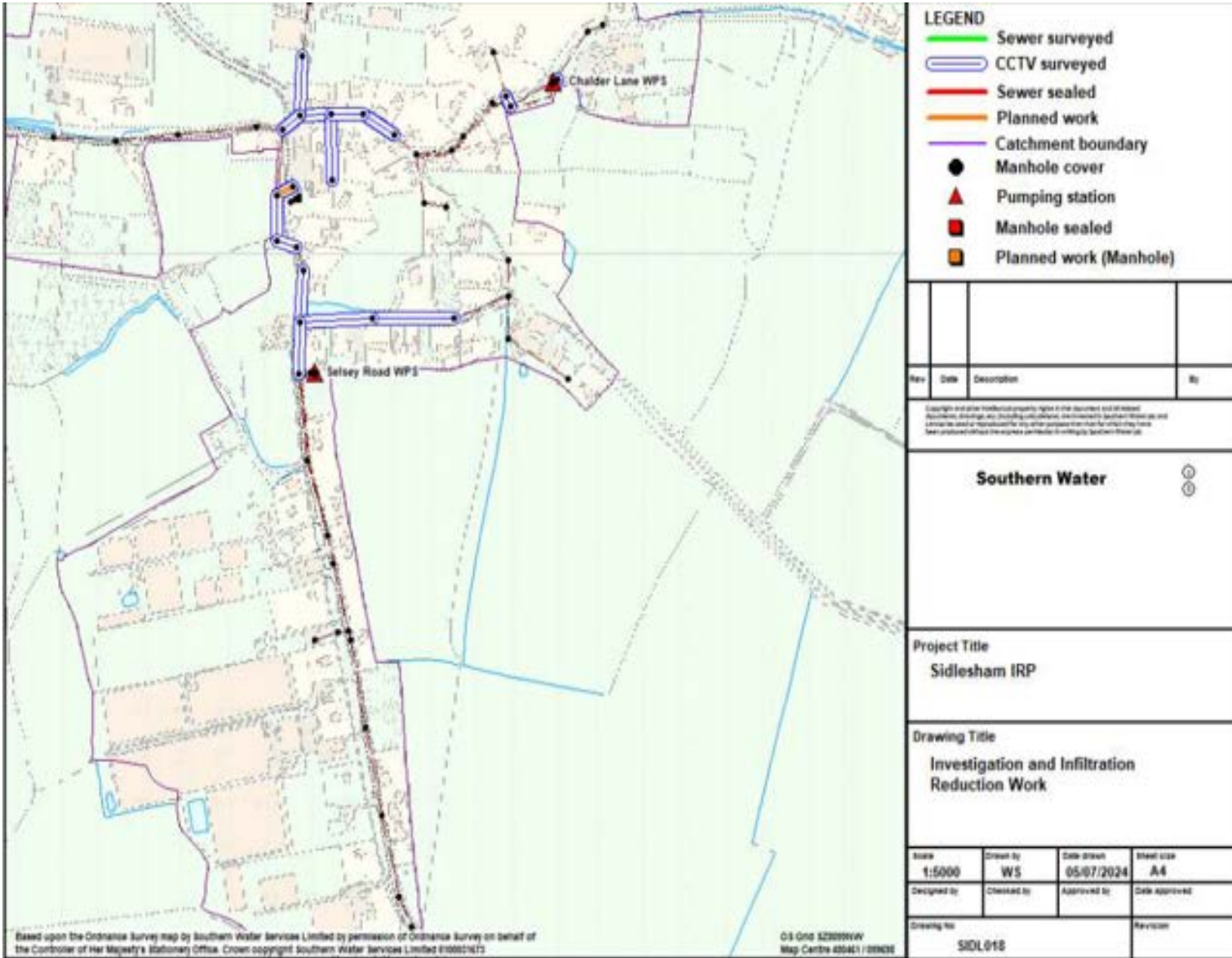
Detailed plan 17

Note – sewers shown as surveyed by cctv or electroscan with no corresponding sealing work have been determined to not require rehabilitation. The use of storm harvester data will be used at some point in the future to target inspections and find infiltration

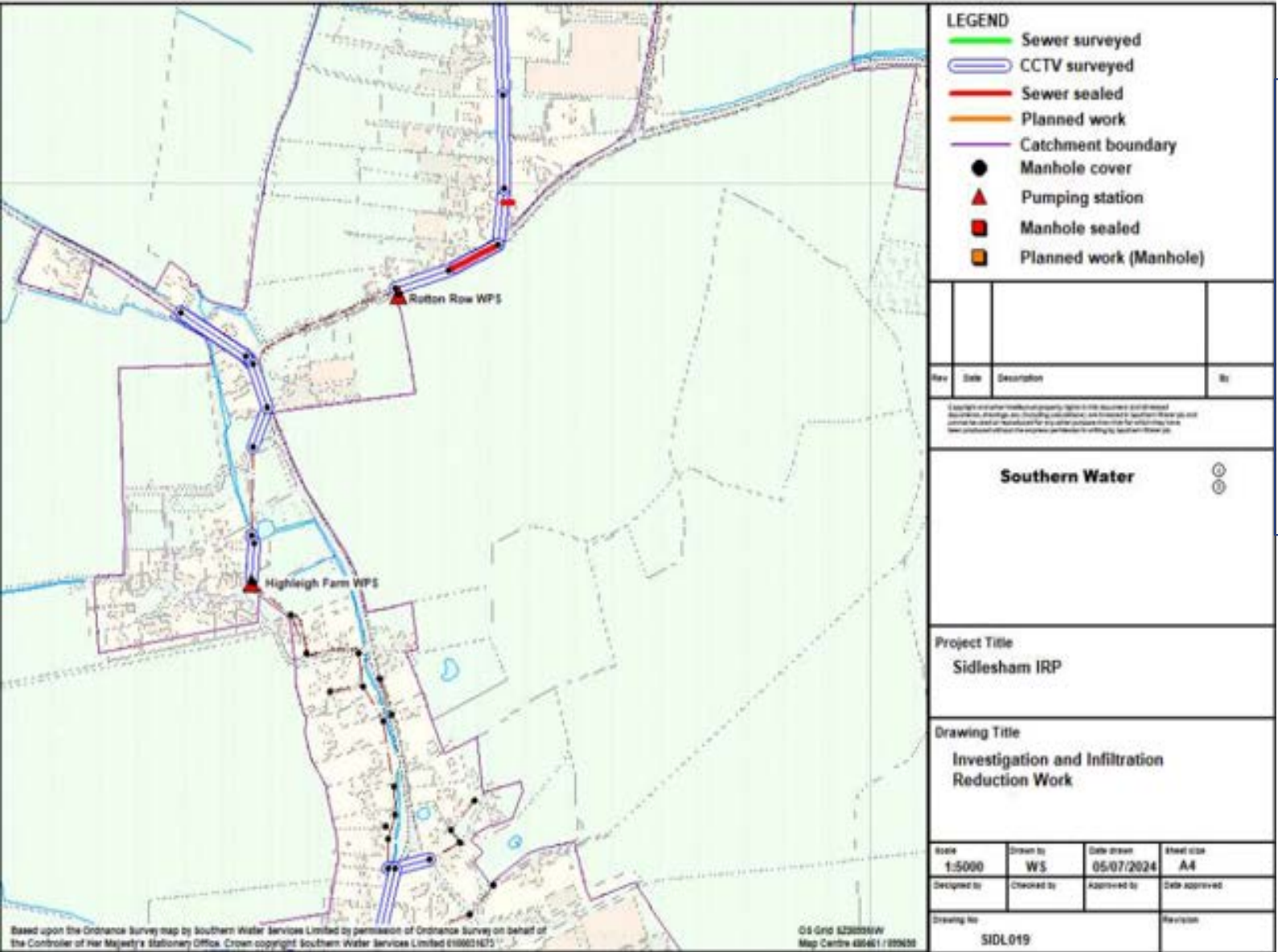


Detailed plan 18

Note – sewers shown as surveyed by cctv or electroscan with no corresponding sealing work have been determined to not require rehabilitation. The use of storm harvester data will be used at some point in the future to target inspections and find infiltration



Detailed plan 19

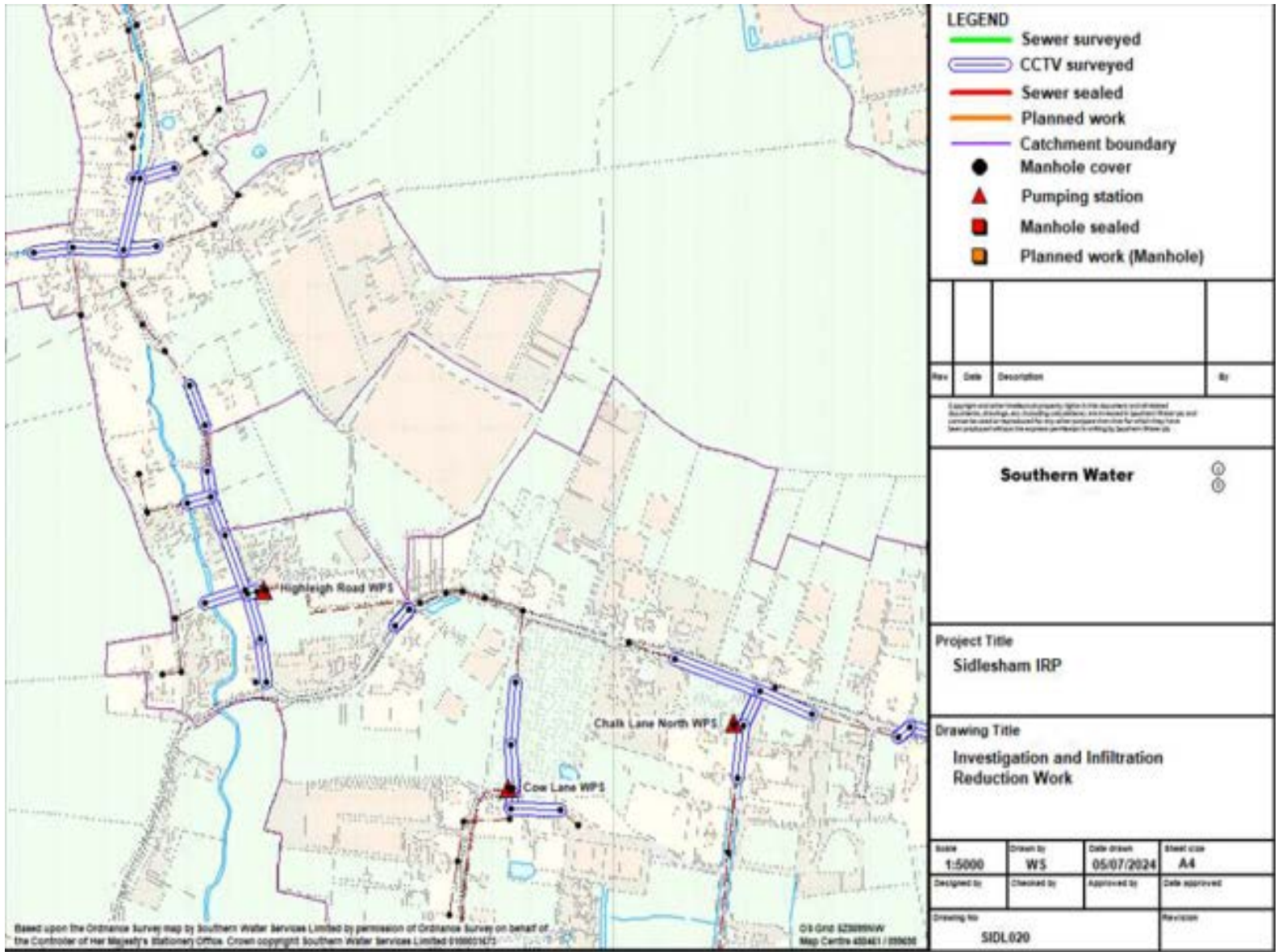


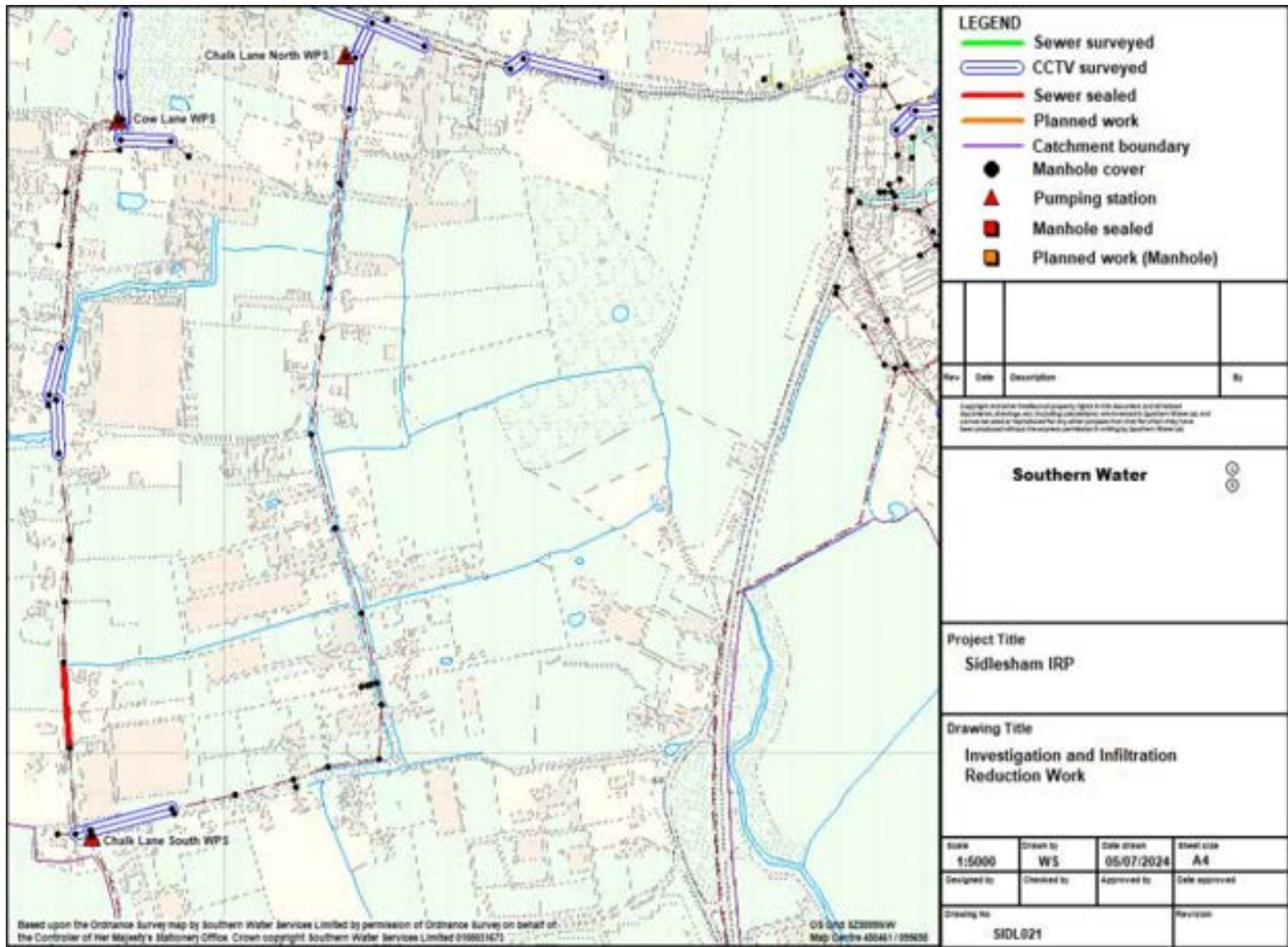
Note – sewers shown as surveyed by cctv or electroscan with no corresponding sealing work have been determined to not require rehabilitation. The use of storm harvester data will be used at some point in the future to target inspections and find infiltration



Detailed plan 20

Note – sewers shown as surveyed by cctv or electroscan with no corresponding sealing work have been determined to not require rehabilitation. The use of storm harvester data will be used at some point in the future to target inspections and find infiltration





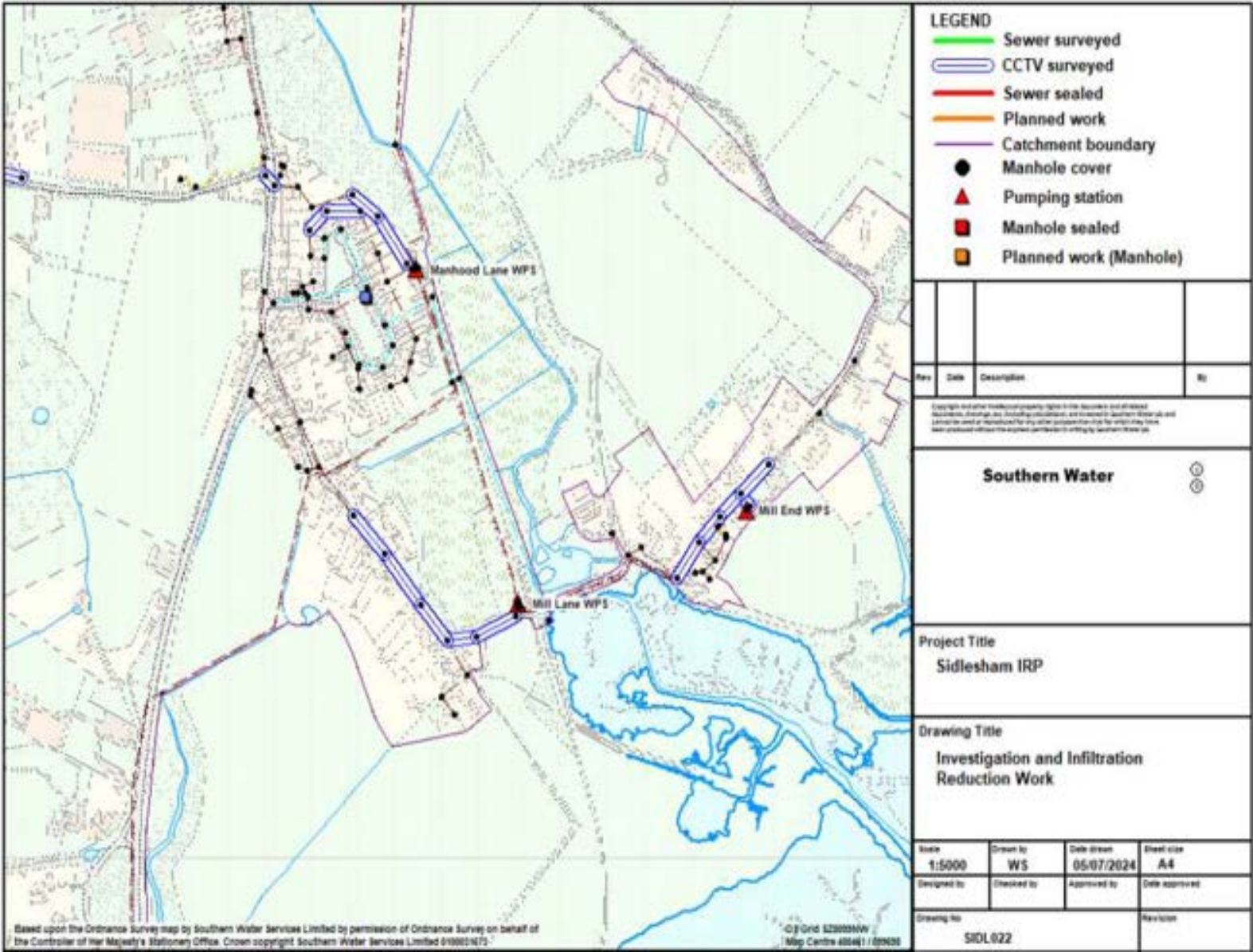
Detailed plan 21

Note – sewers shown as surveyed by cctv or electroscan with no corresponding sealing work have been determined to not require rehabilitation. The use of storm harvester data will be used at some point in the future to target inspections and find infiltration



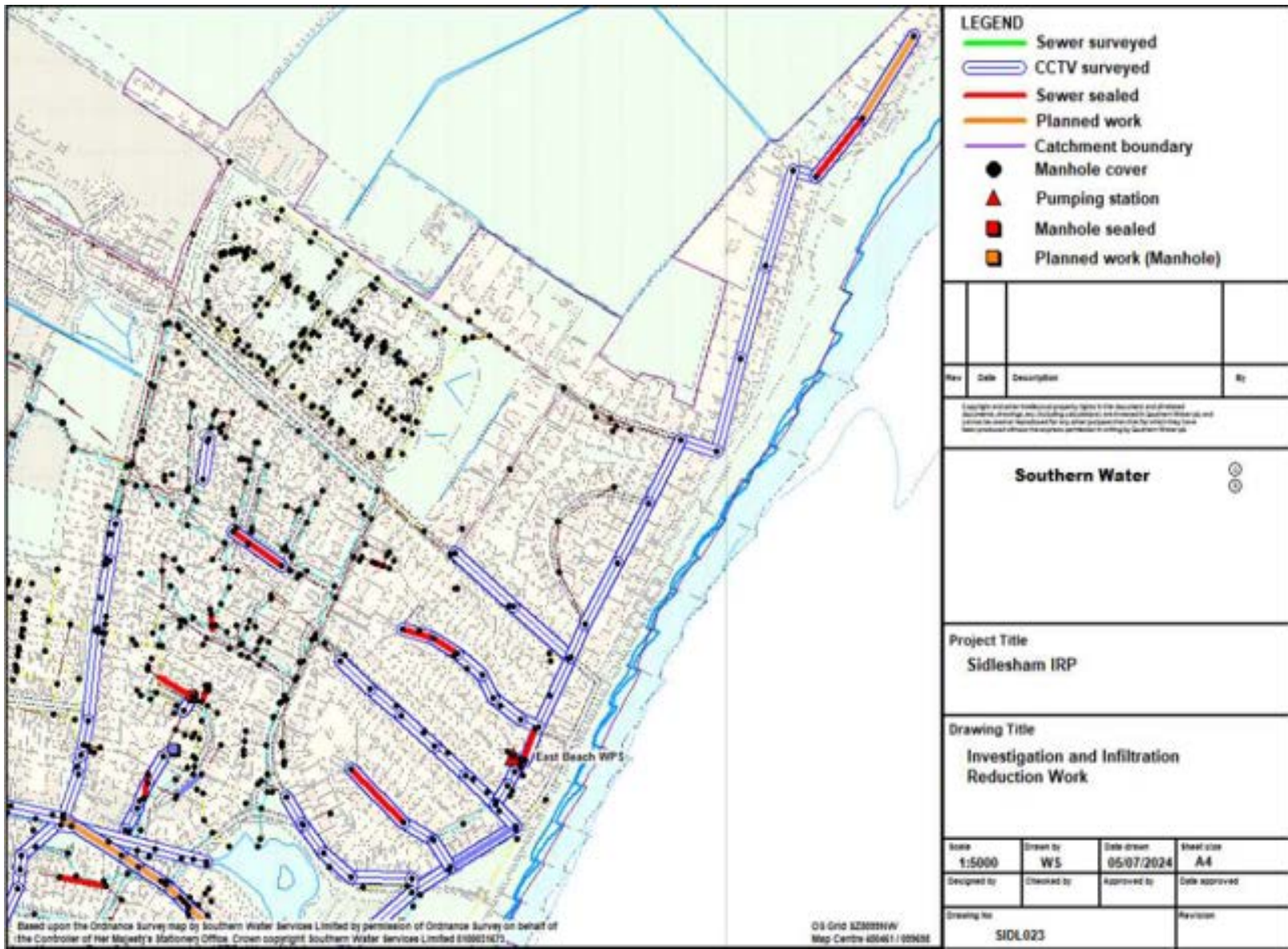
Detailed plan 22

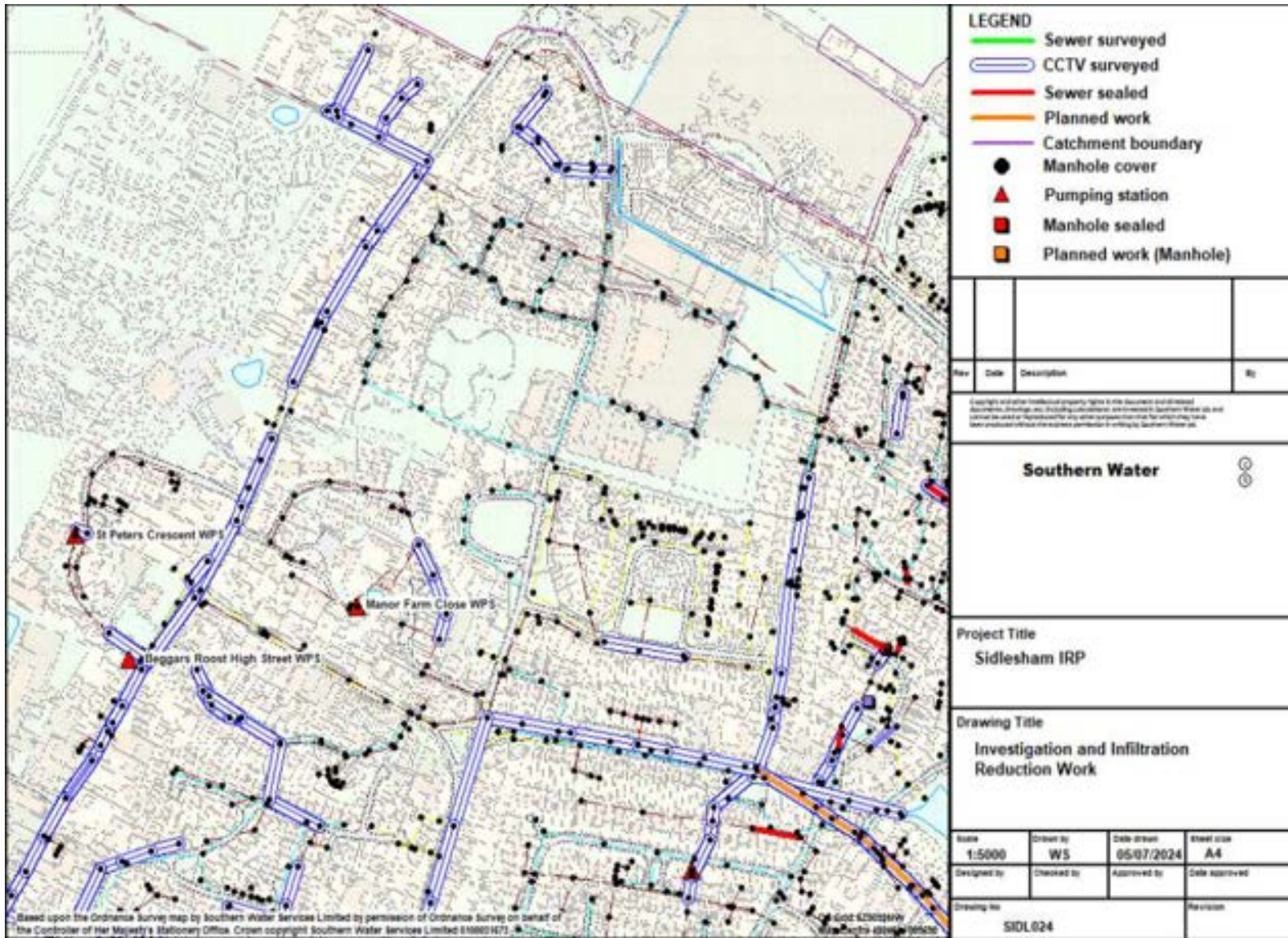
Note – sewers shown as surveyed by cctv or electroscan with no corresponding sealing work have been determined to not require rehabilitation. The use of storm harvester data will be used at some point in the future to target inspections and find infiltration



Detailed plan 23

Note – sewers shown as surveyed by cctv or electroscan with no corresponding sealing work have been determined to not require rehabilitation. The use of storm harvester data will be used at some point in the future to target inspections and find infiltration





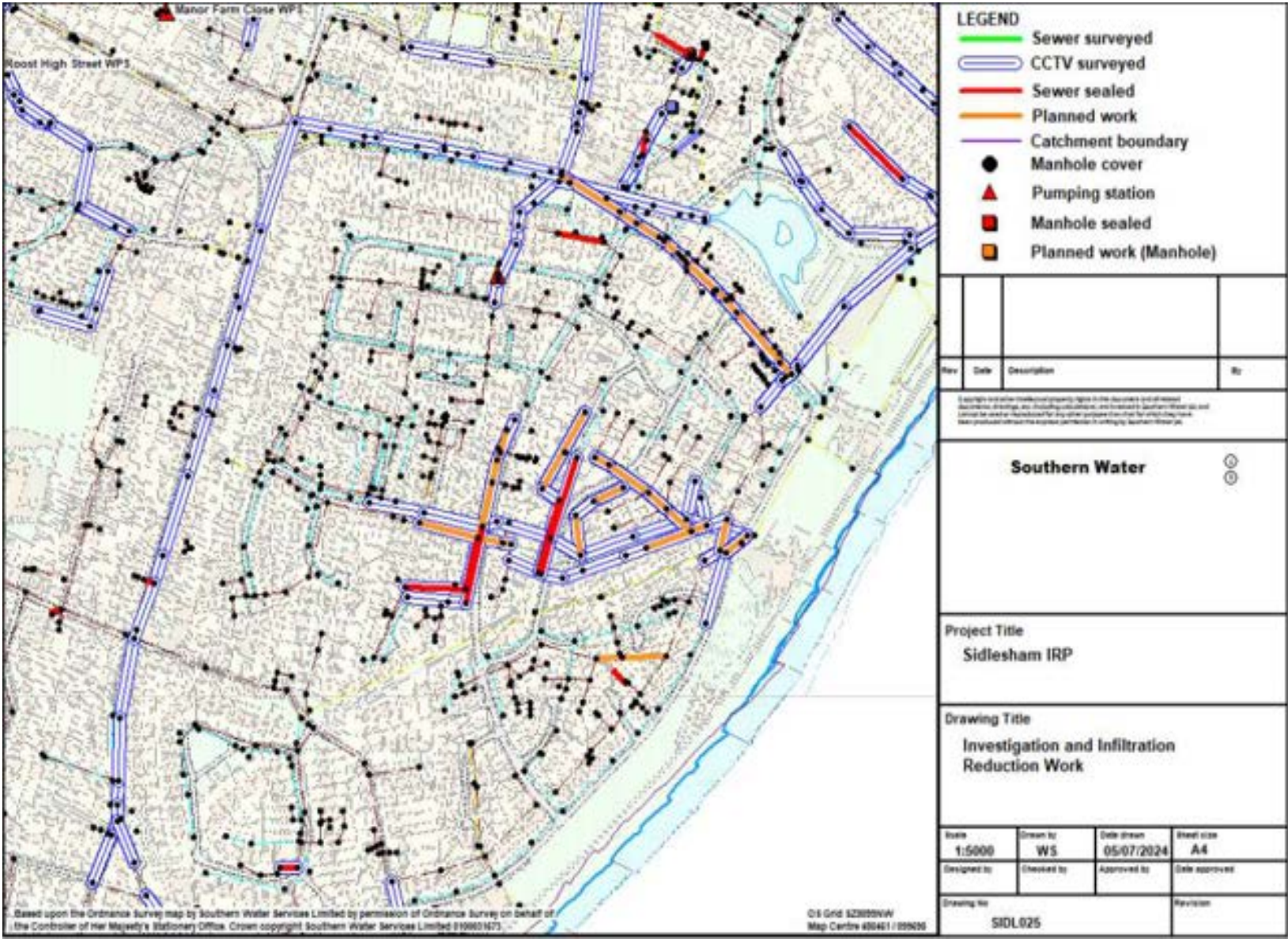
Detailed plan 24

Note – sewers shown as surveyed by cctv or electroscan with no corresponding sealing work have been determined to not require rehabilitation. The use of storm harvester data will be used at some point in the future to target inspections and find infiltration



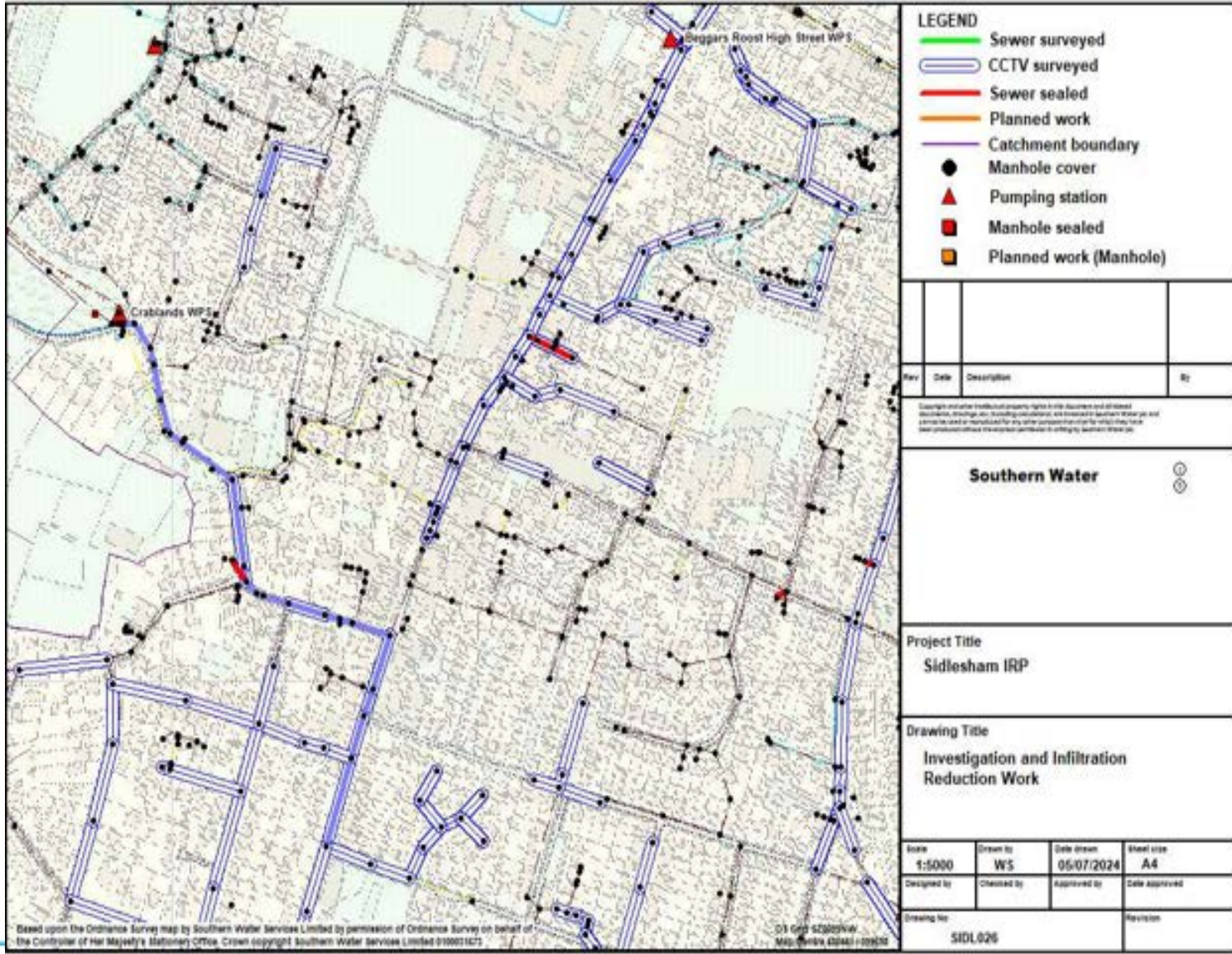
Detailed plan 25

Note – sewers shown as surveyed by cctv or electroscan with no corresponding sealing work have been determined to not require rehabilitation. The use of storm harvester data will be used at some point in the future to target inspections and find infiltration

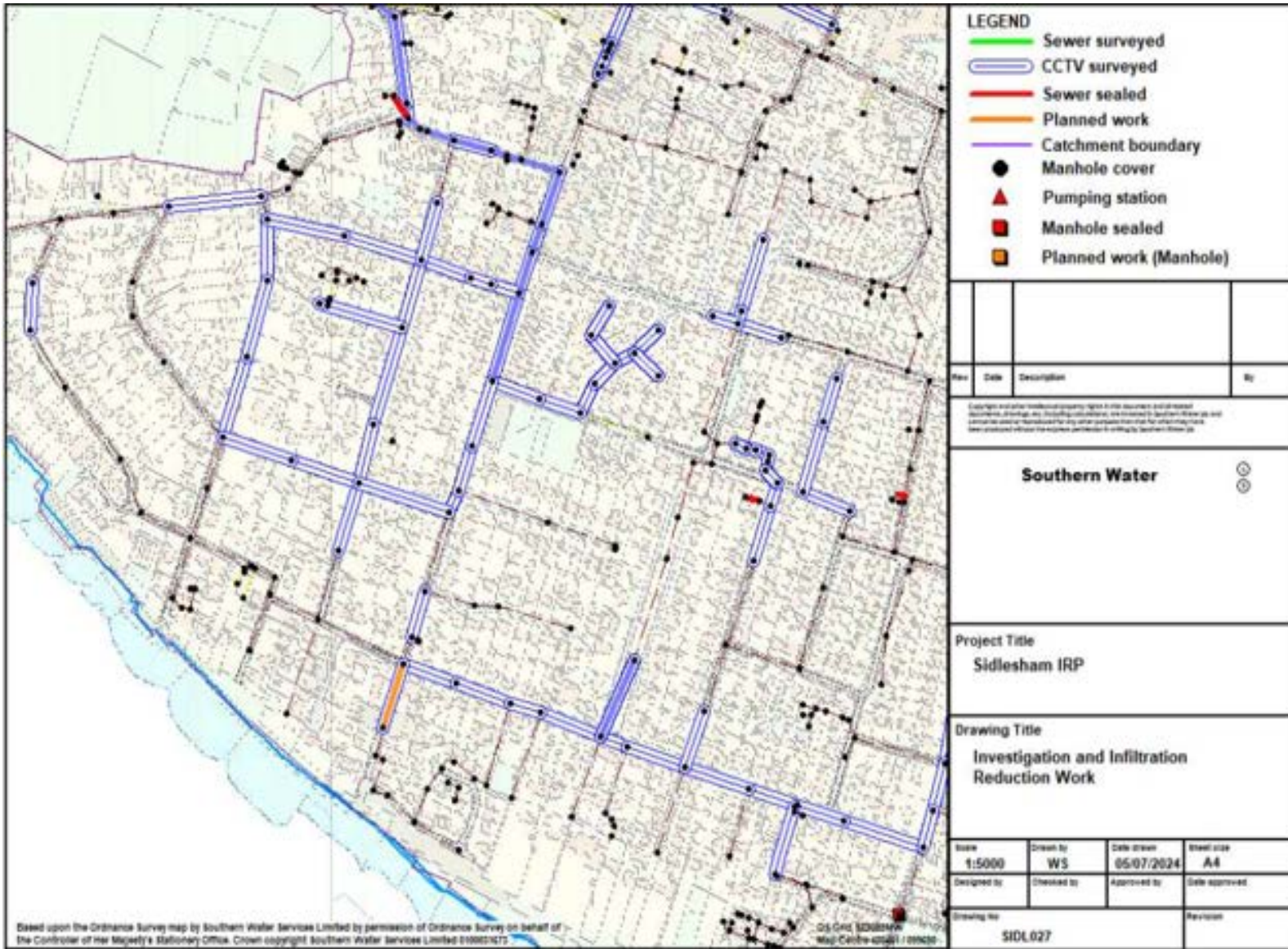


Detailed plan 26

Note – sewers shown as surveyed by cctv or electroscan with no corresponding sealing work have been determined to not require rehabilitation. The use of storm harvester data will be used at some point in the future to target inspections and find infiltration



Detailed plan 27

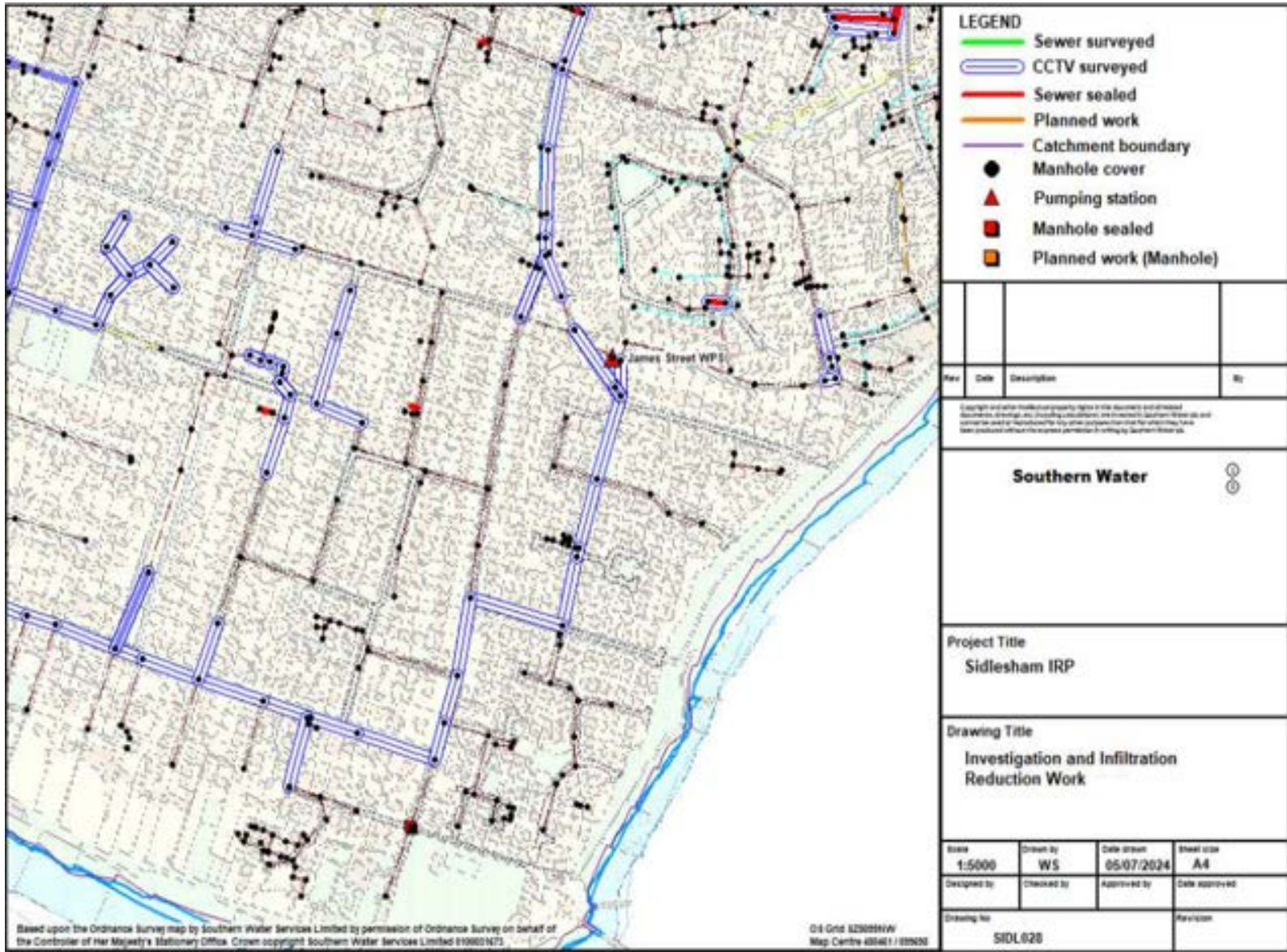


Note – sewers shown as surveyed by cctv or electroscan with no corresponding sealing work have been determined to not require rehabilitation. The use of storm harvester data will be used at some point in the future to target inspections and find infiltration



Detailed plan 28

Note – sewers shown as surveyed by cctv or electroscan with no corresponding sealing work have been determined to not require rehabilitation. The use of storm harvester data will be used at some point in the future to target inspections and find infiltration



LEGEND			
	Sewer surveyed		
	CCTV surveyed		
	Sewer sealed		
	Planned work		
	Catchment boundary		
	Manhole cover		
	Pumping station		
	Manhole sealed		
	Planned work (Manhole)		
Rev	Date	Description	By
<small>Copyright and other intellectual property rights in this document and all related documents, drawings, and drawings and related documents are reserved by Southern Water and cannot be used or reproduced by any other person without the prior written consent of Southern Water.</small>			
Southern Water			
Project Title Sidlesham IRP			
Drawing Title Investigation and Infiltration Reduction Work			
Scale 1:5000	Drawn by WS	Date drawn 05/07/2024	Sheet size A4
Designed by	Checked by	Approved by	Date approved
Drawing No SIDL028			Revision

