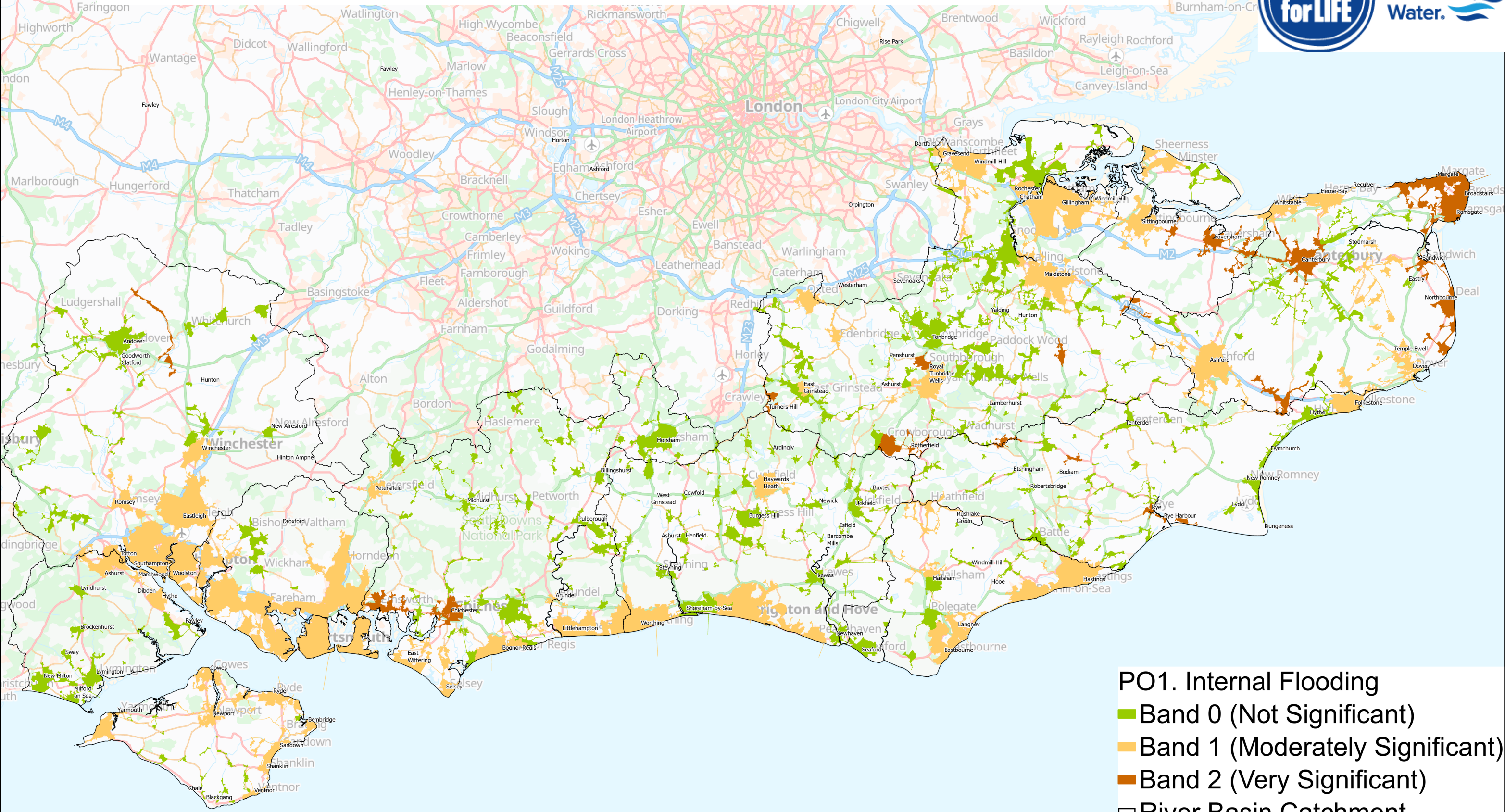
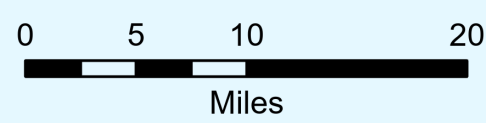


BRAVA Results for the Planning Objective on Internal Flooding (2020)



- PO1. Internal Flooding**
- Band 0 (Not Significant)
 - Band 1 (Moderately Significant)
 - Band 2 (Very Significant)
 - River Basin Catchment



Based upon the Ordnance Survey by permission of Ordnance Survey on behalf of the Controller of Her Majesty's Stationary Office. Crown copyright Southern Water Services Limited 1000019426