

# Barnham Infiltration Plan

Appendix A – Status of Planned Actions July 2024

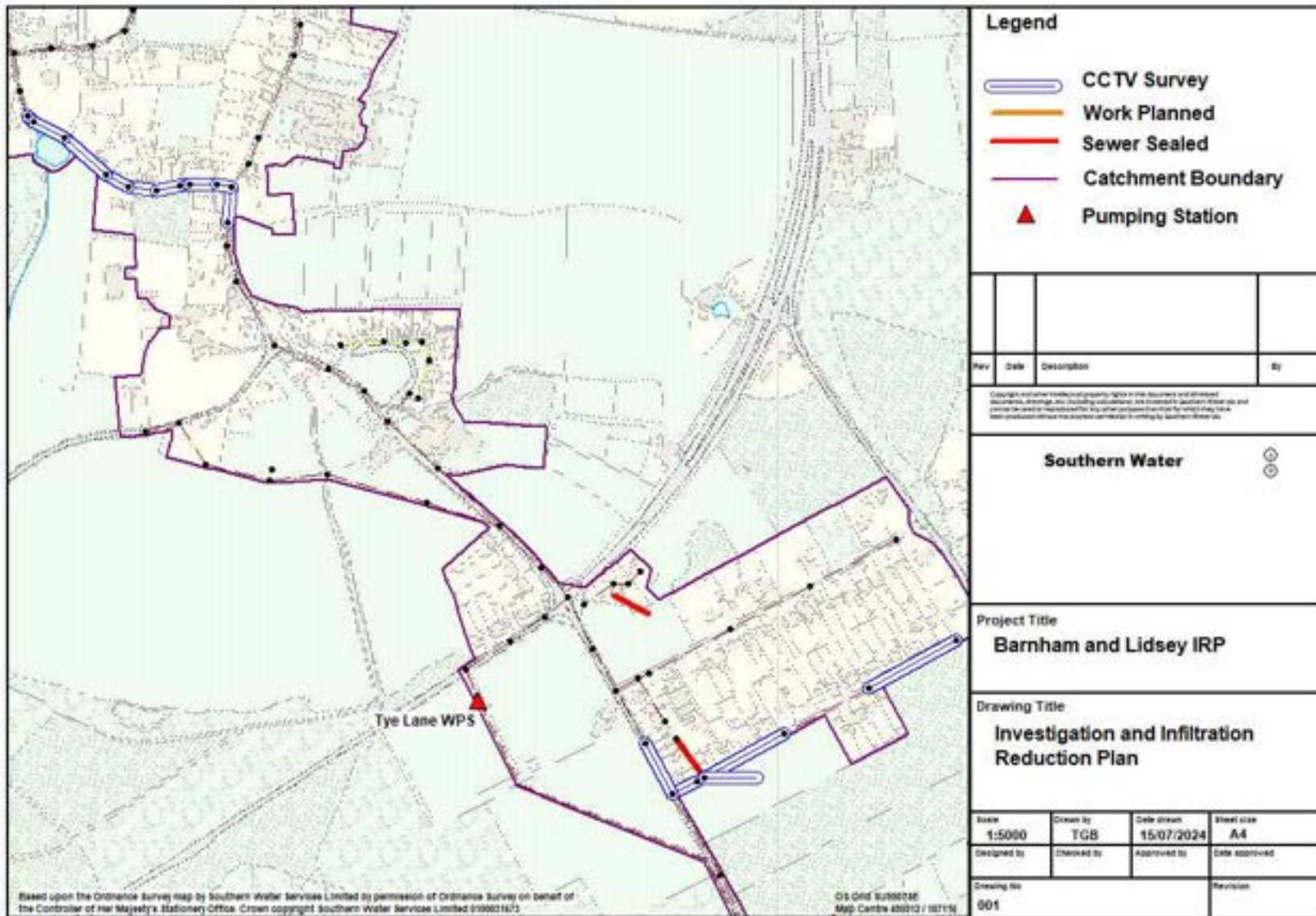


## Summary of work completed

Action	Km of sewer
Length Surveyed	10.86
Length with no work required	6.91
Length Sealed	1.81
Length to be sealed	2.14
Manholes sealed	6
Manholes to be sealed	0

Reporting Year	Surveyed (km)	Sewers Sealed (km)	Manholes Sealed
2014	3.3	0	0
2015	0.22	0.16	1
2016	1.04	0.67	5
2017	2.89	0.18	0
2018	3.41	0.190	0
2019	0	0.55	0
2020	0	0	0
2021	0	0	0
2022	0	0	0
2023	0	0	0
2024	0	0.06	0
Post 2024	0	0	0
<b>Total</b>	<b>10.86</b>	<b>1.81</b>	<b>6</b>



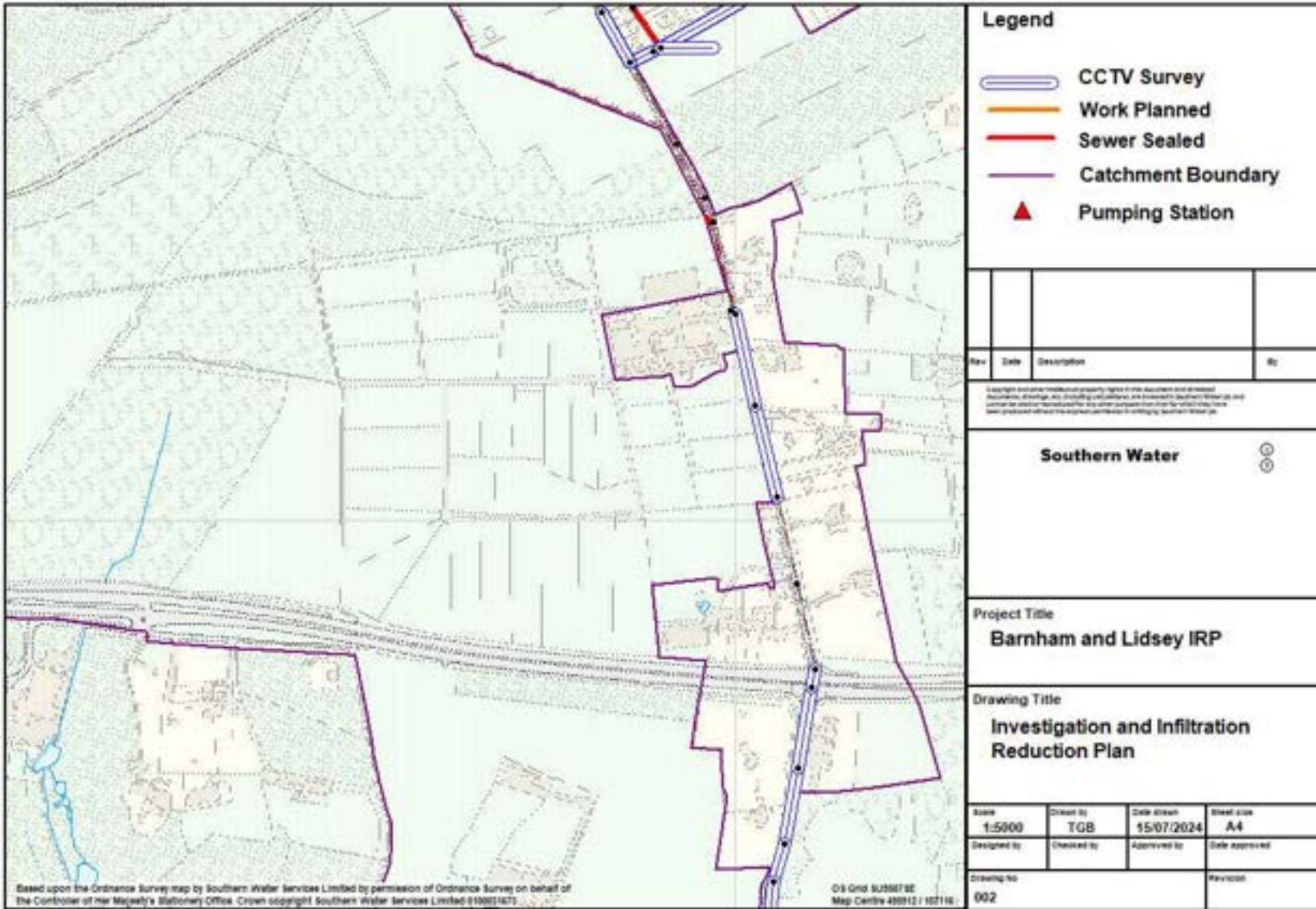


## Detailed plan 1

Note – sewers shown as surveyed by cctv with no corresponding sealing work have been determined to not require rehabilitation. The use of storm harvester data will be used at some point in the future to target inspections and find infiltration



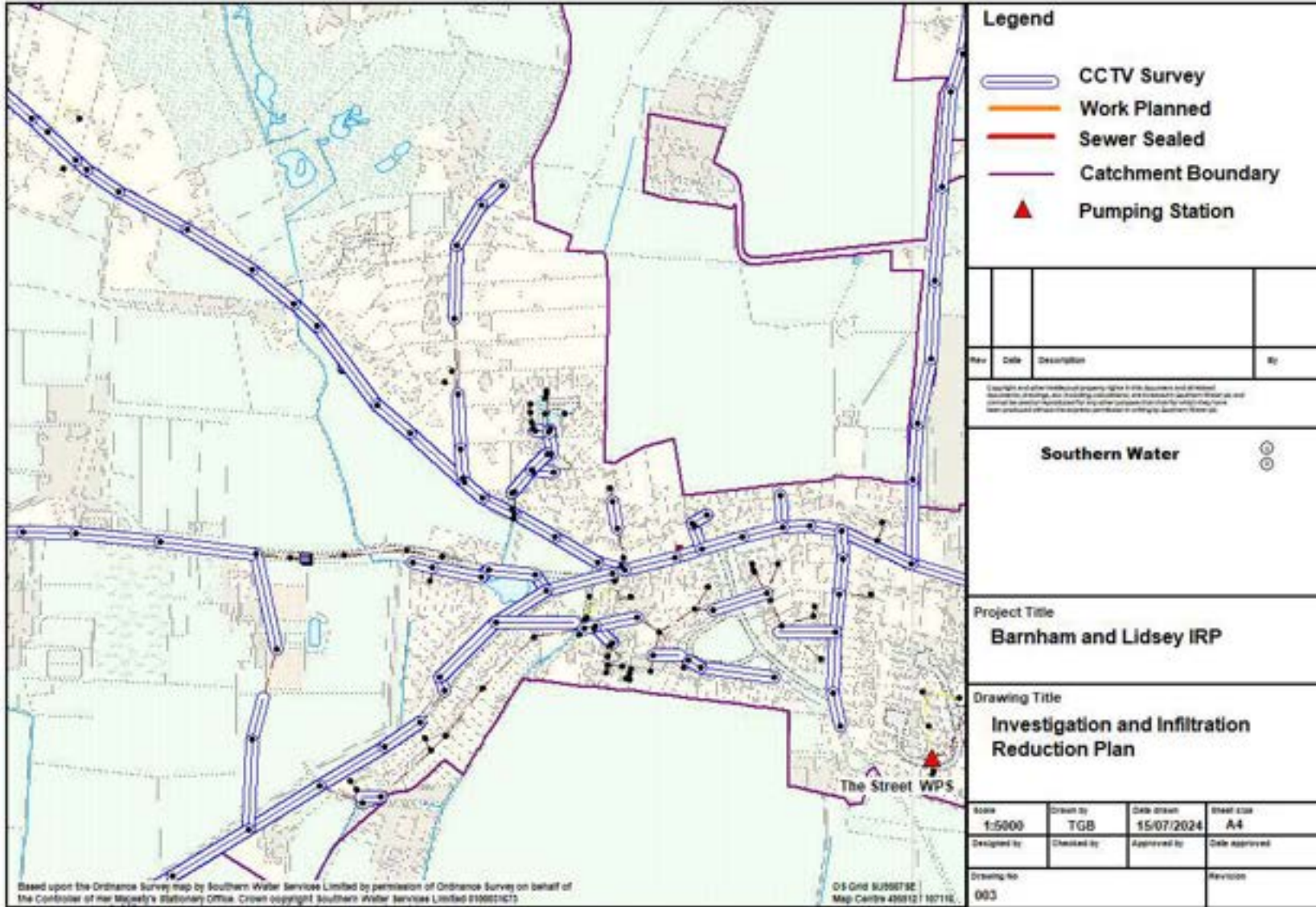




## Detailed plan 2

Note – sewers shown as surveyed by cctv or with no corresponding sealing work have been determined to not require rehabilitation. The use of storm harvester data will be used at some point in the future to target inspections and find infiltration



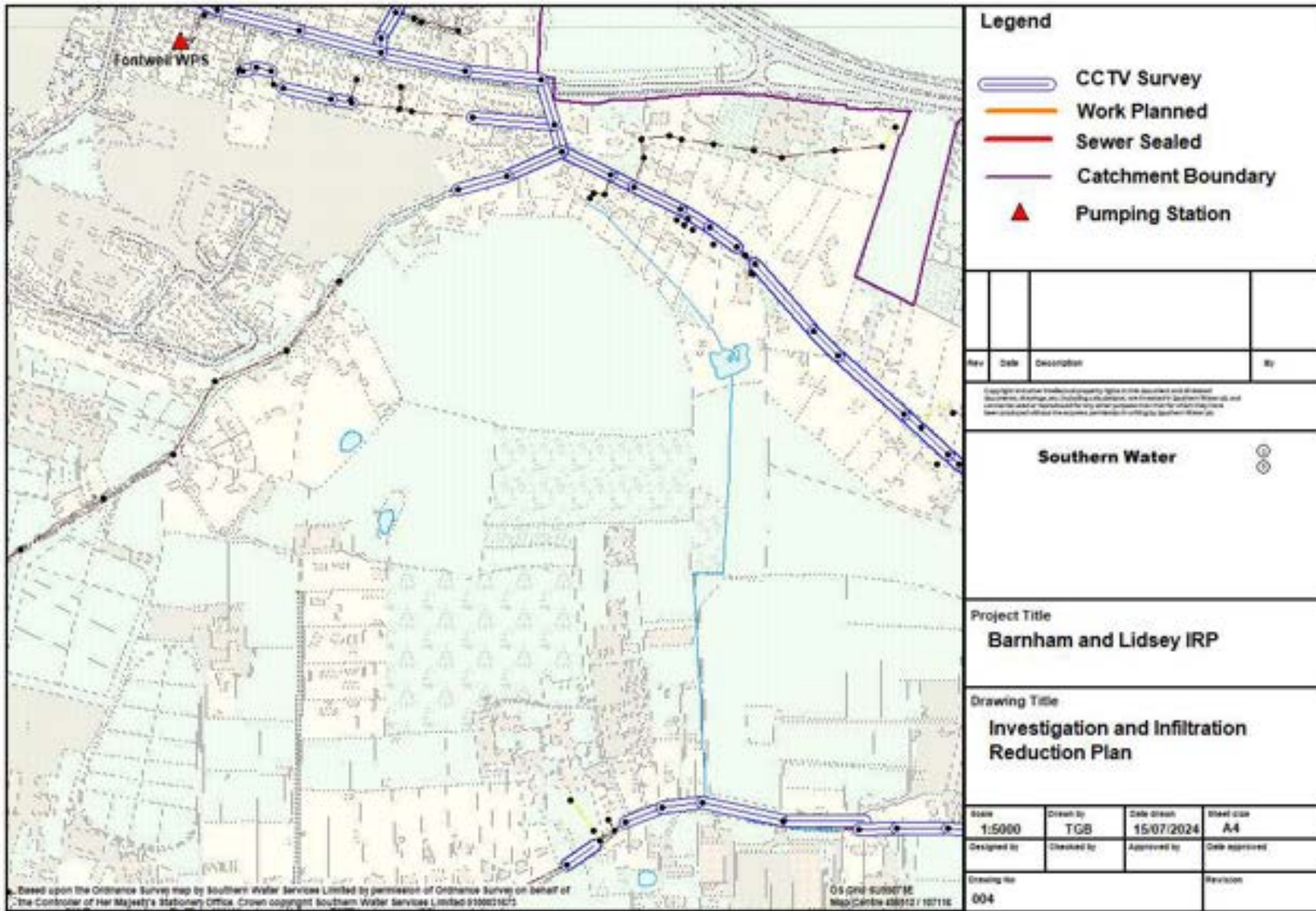


## Detailed plan 3

Note – sewers shown as surveyed by cctv or with no corresponding sealing work have been determined to not require rehabilitation. The use of storm harvester data will be used at some point in the future to target inspections and find infiltration



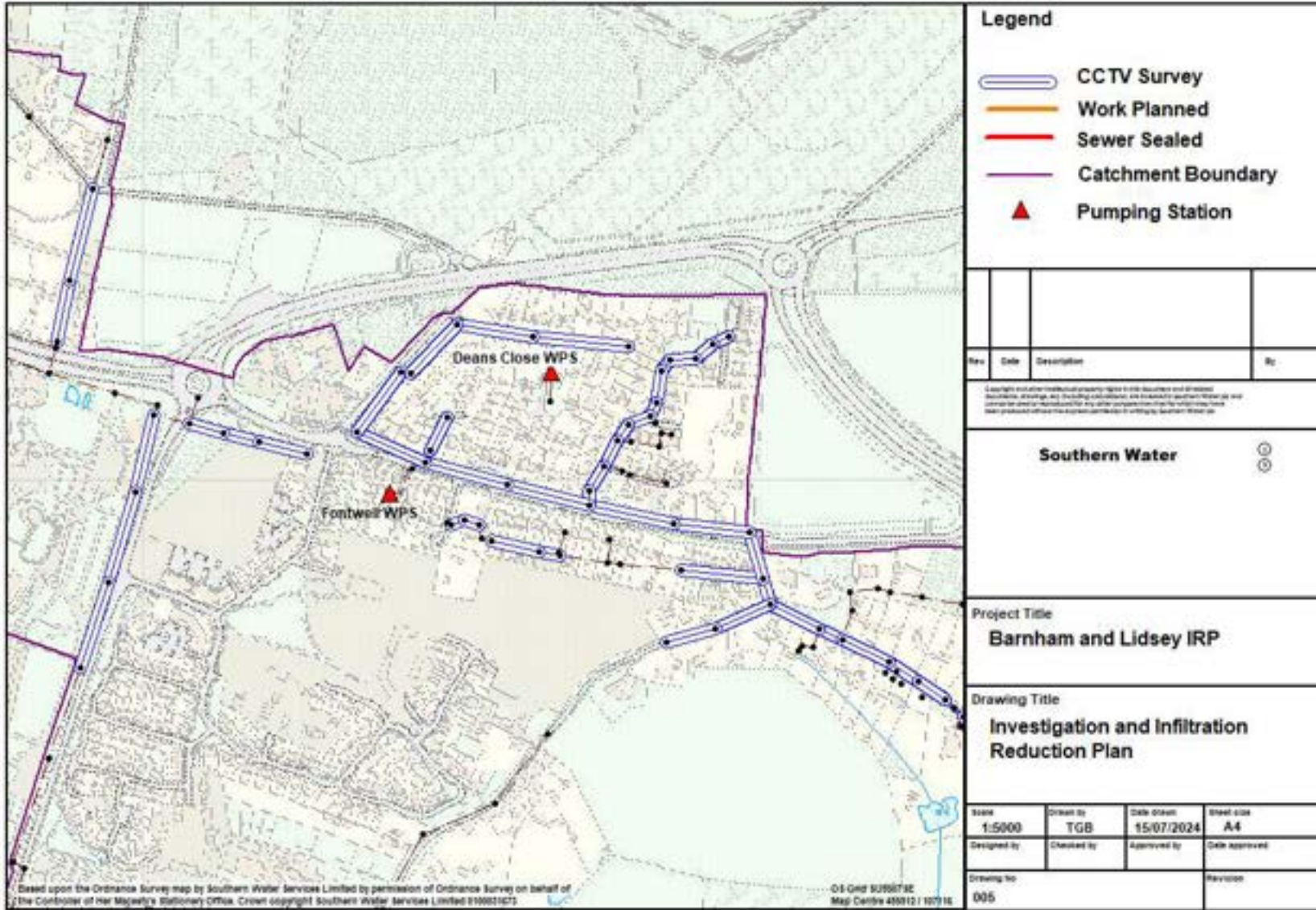




## Detailed plan 4

Note – sewers shown as surveyed by cctv or with no corresponding sealing work have been determined to not require rehabilitation. The use of storm harvester data will be used at some point in the future to target inspections and find infiltration



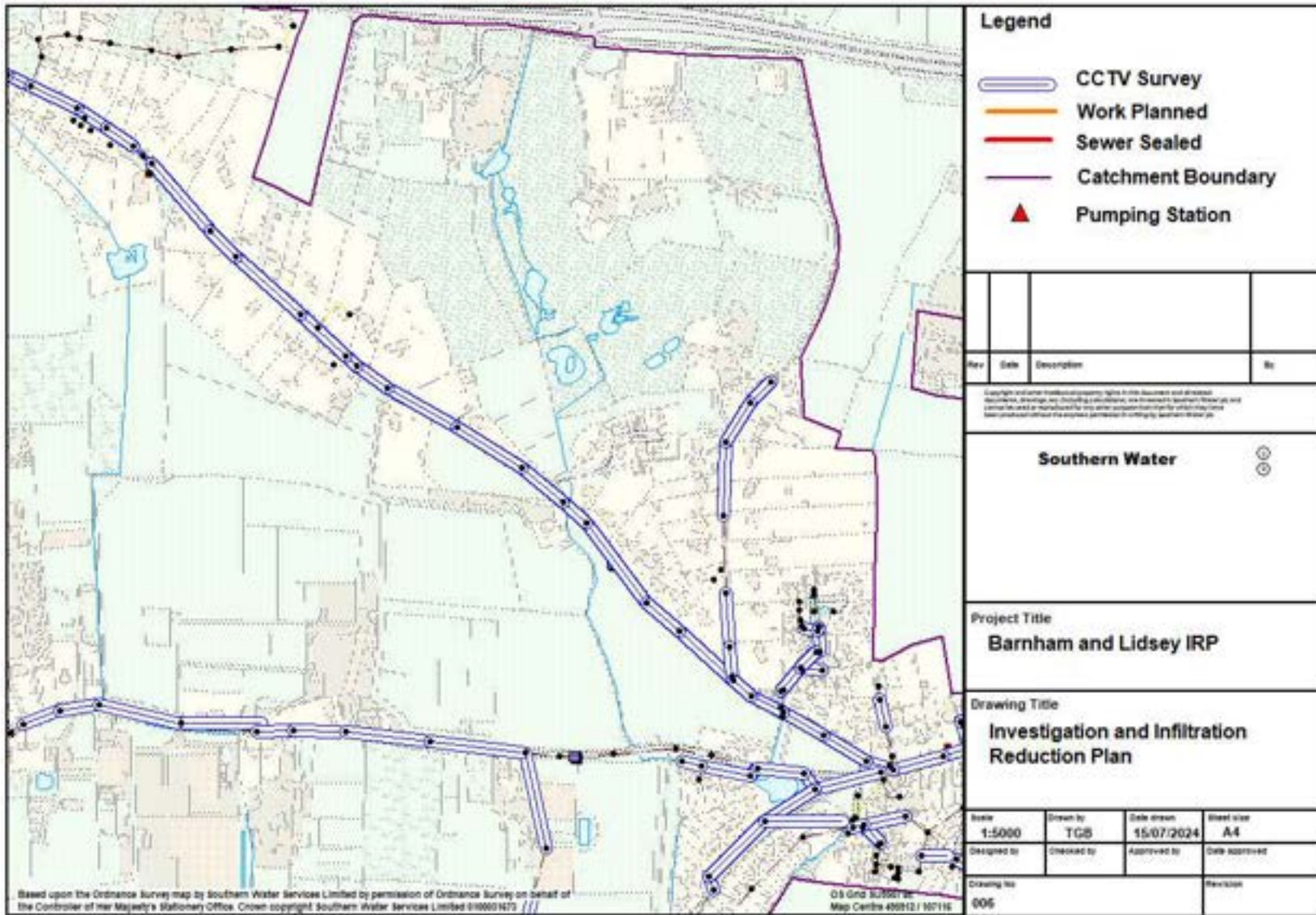


## Detailed plan 5

Note – sewers shown as surveyed by cctv or with no corresponding sealing work have been determined to not require rehabilitation. The use of storm harvester data will be used at some point in the future to target inspections and find infiltration







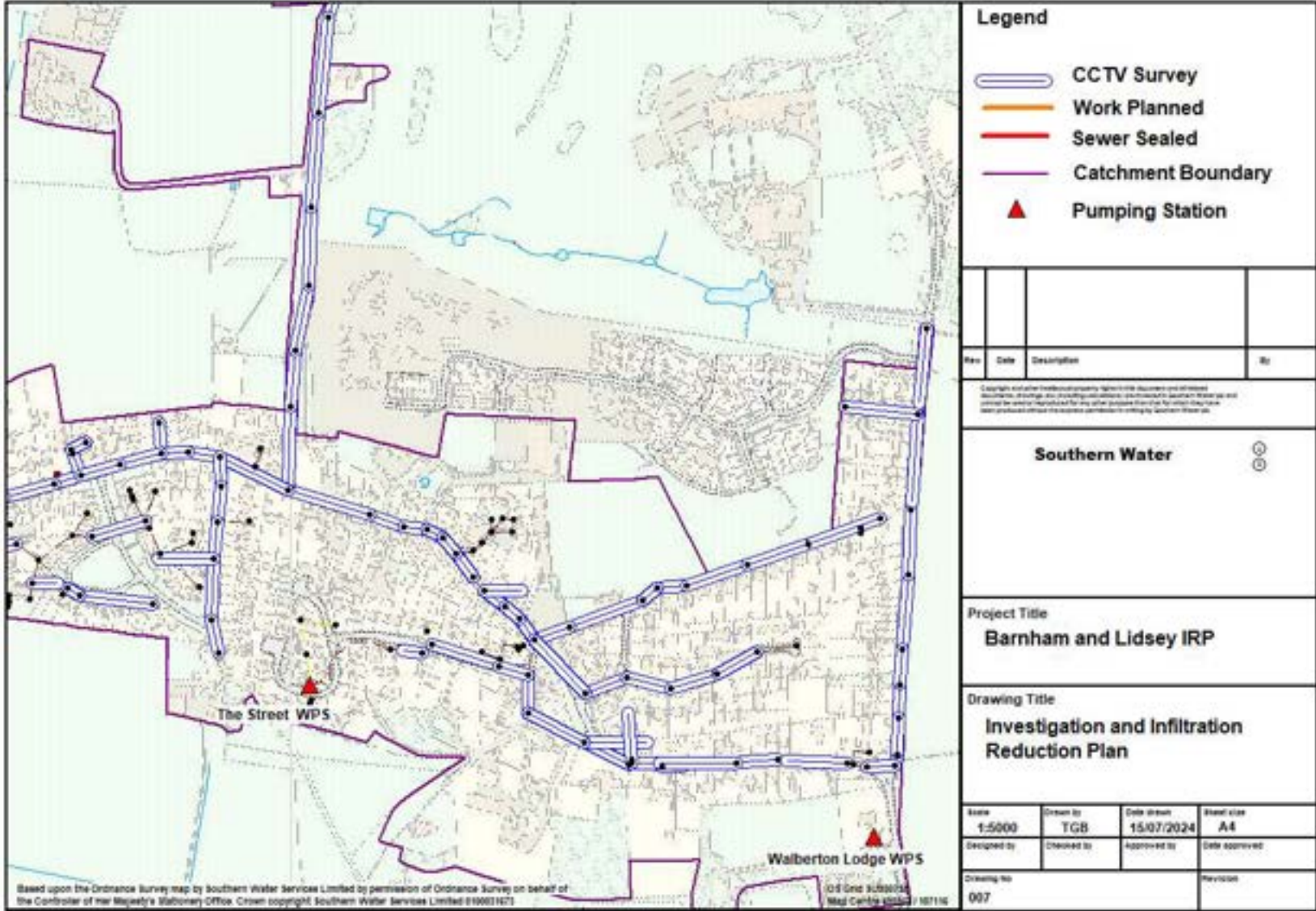
## Detailed plan 6

Note – sewers shown as surveyed by cctv or with no corresponding sealing work have been determined to not require rehabilitation. The use of storm harvester data will be used at some point in the future to target inspections and find infiltration



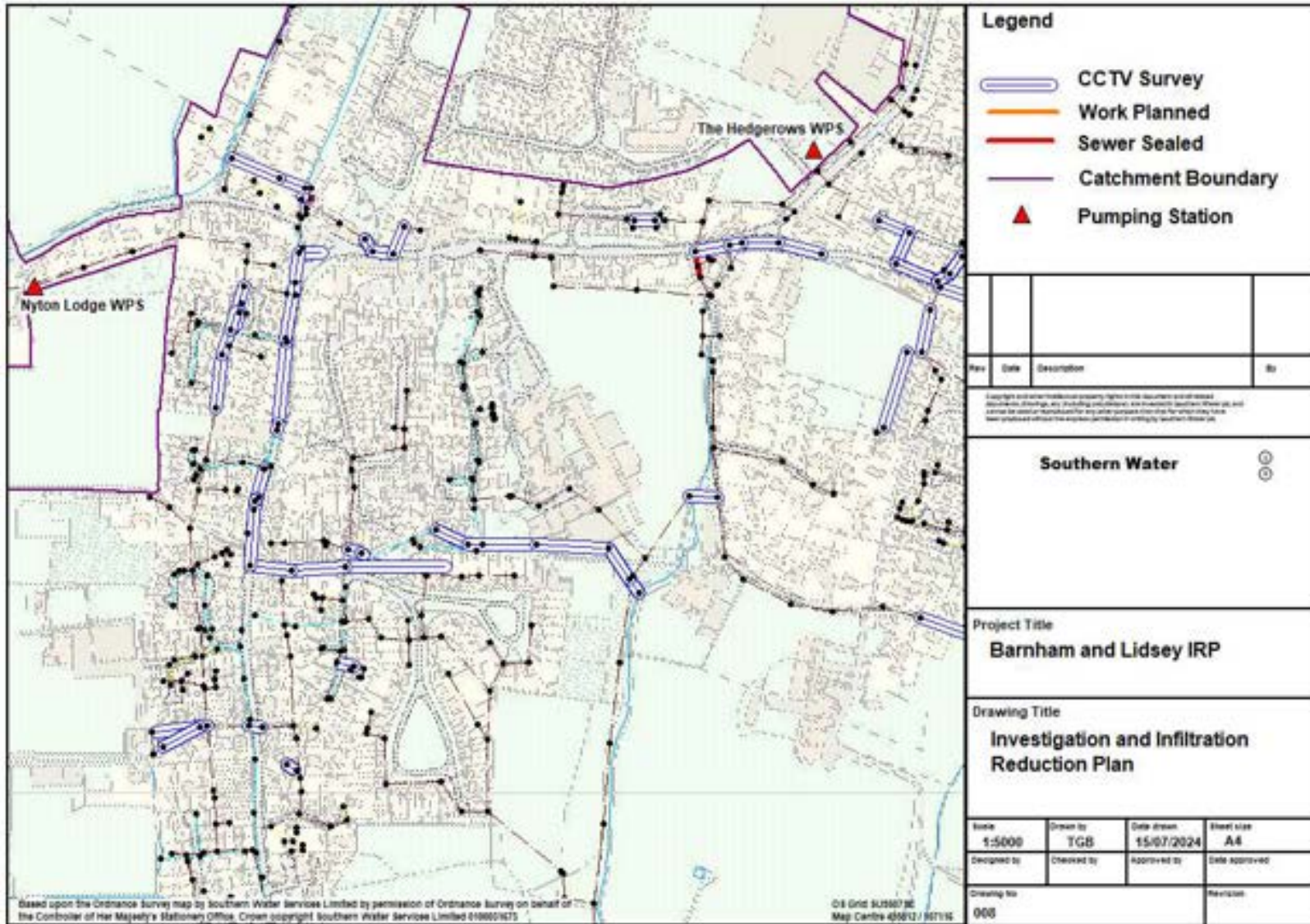


# Detailed plan 7



Note – sewers shown as surveyed by cctv or with no corresponding sealing work have been determined to not require rehabilitation. The use of storm harvester data will be used at some point in the future to target inspections and find infiltration





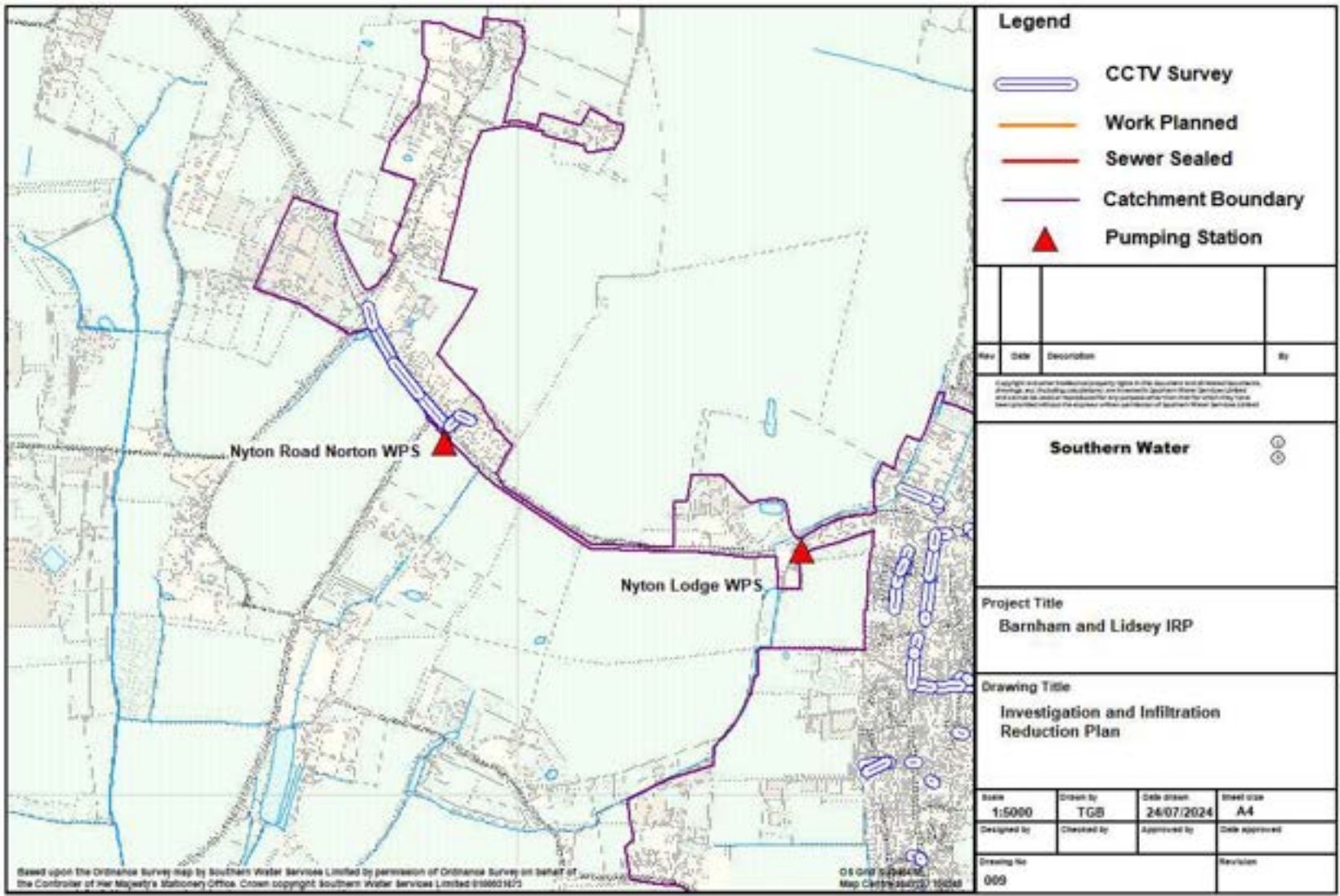
## Detailed plan 8

Note – sewers shown as surveyed by cctv or with no corresponding sealing work have been determined to not require rehabilitation. The use of storm harvester data will be used at some point in the future to target inspections and find infiltration





# Detailed plan 9

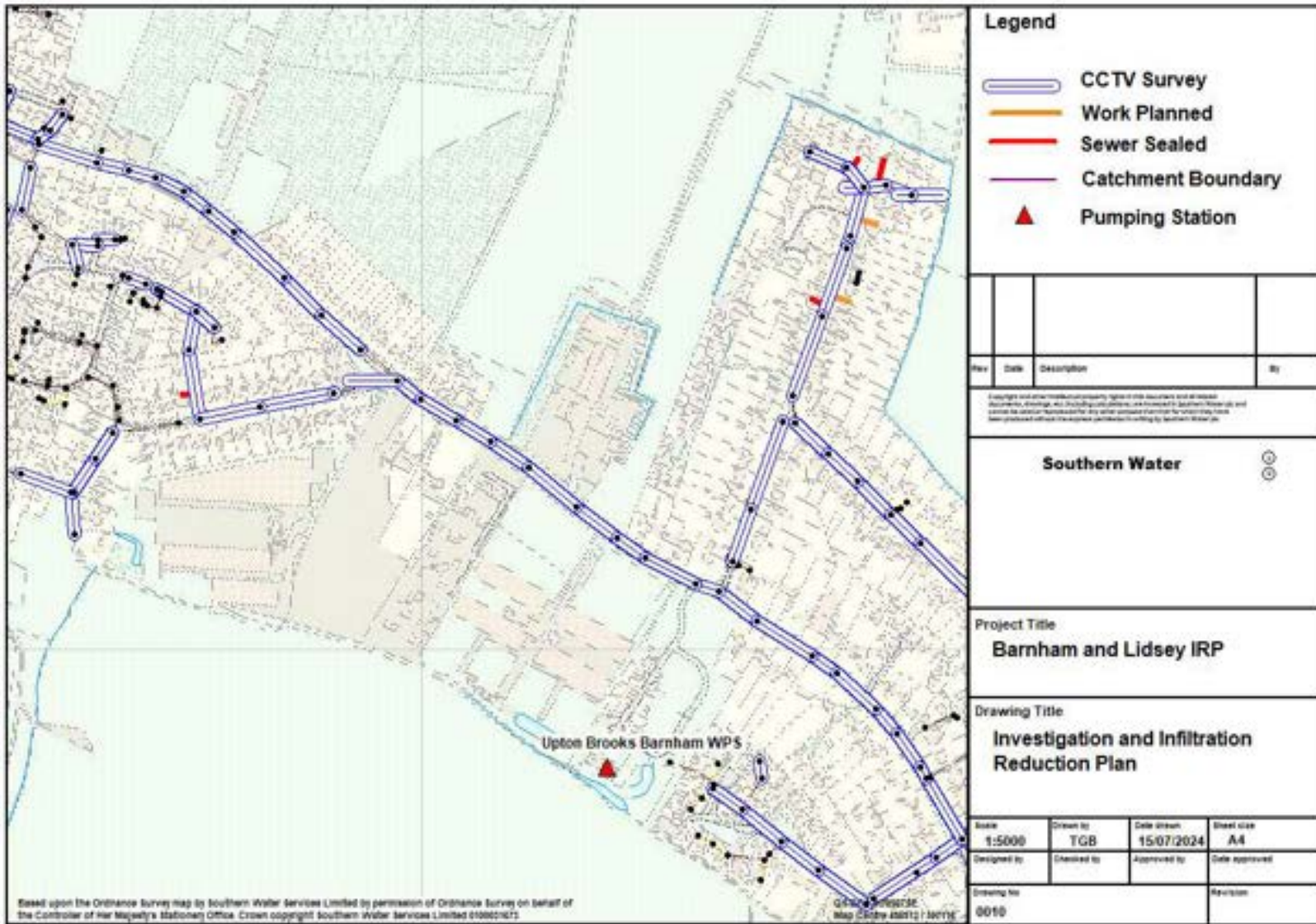


Note – sewers shown as surveyed by cctv or with no corresponding sealing work have been determined to not require rehabilitation. The use of storm harvester data will be used at some point in the future to target inspections and find infiltration



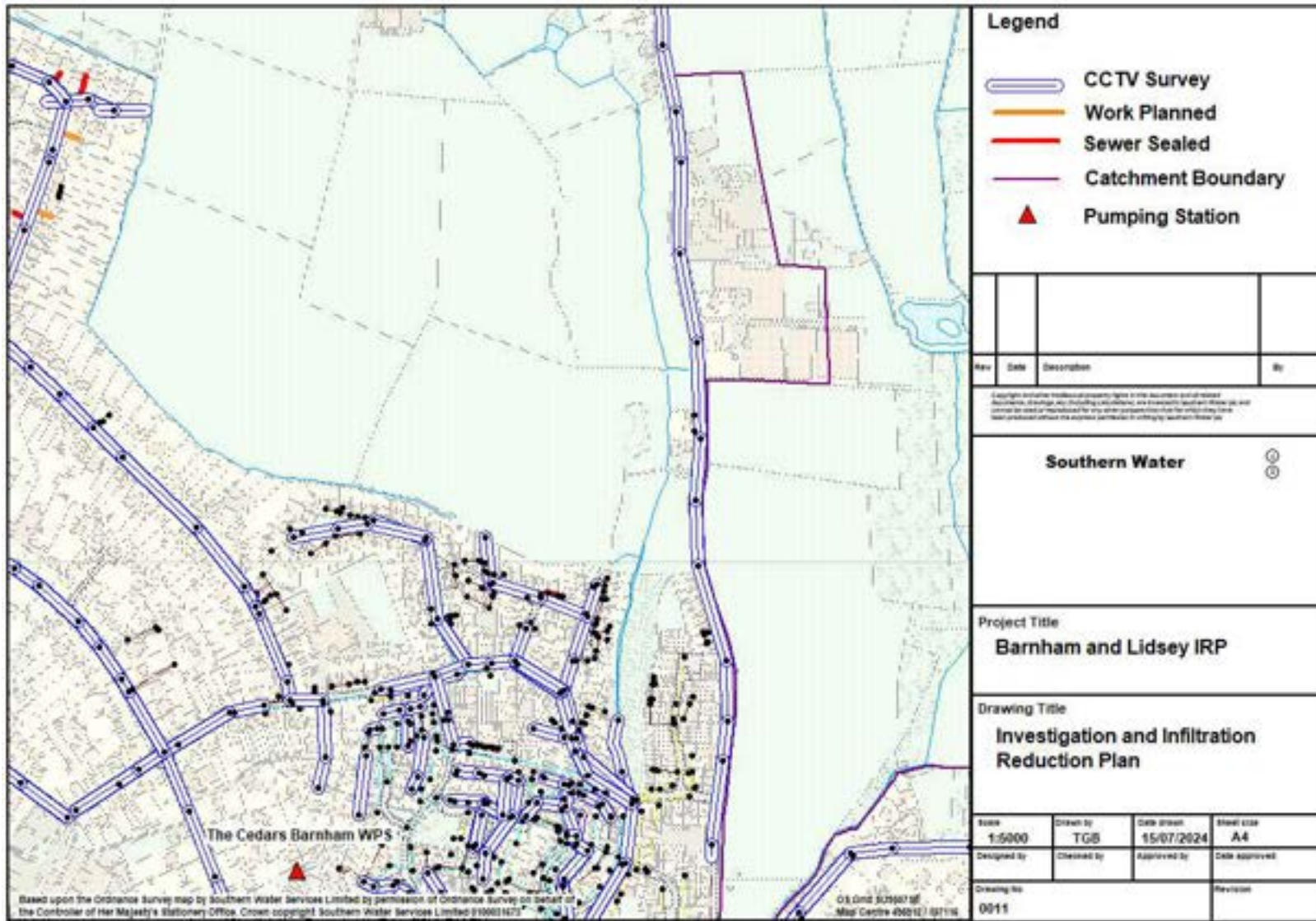
# Detailed plan 10

Note – sewers shown as surveyed by cctv or with no corresponding sealing work have been determined to not require rehabilitation. The use of storm harvester data will be used at some point in the future to target inspections and find infiltration





# Detailed plan 11

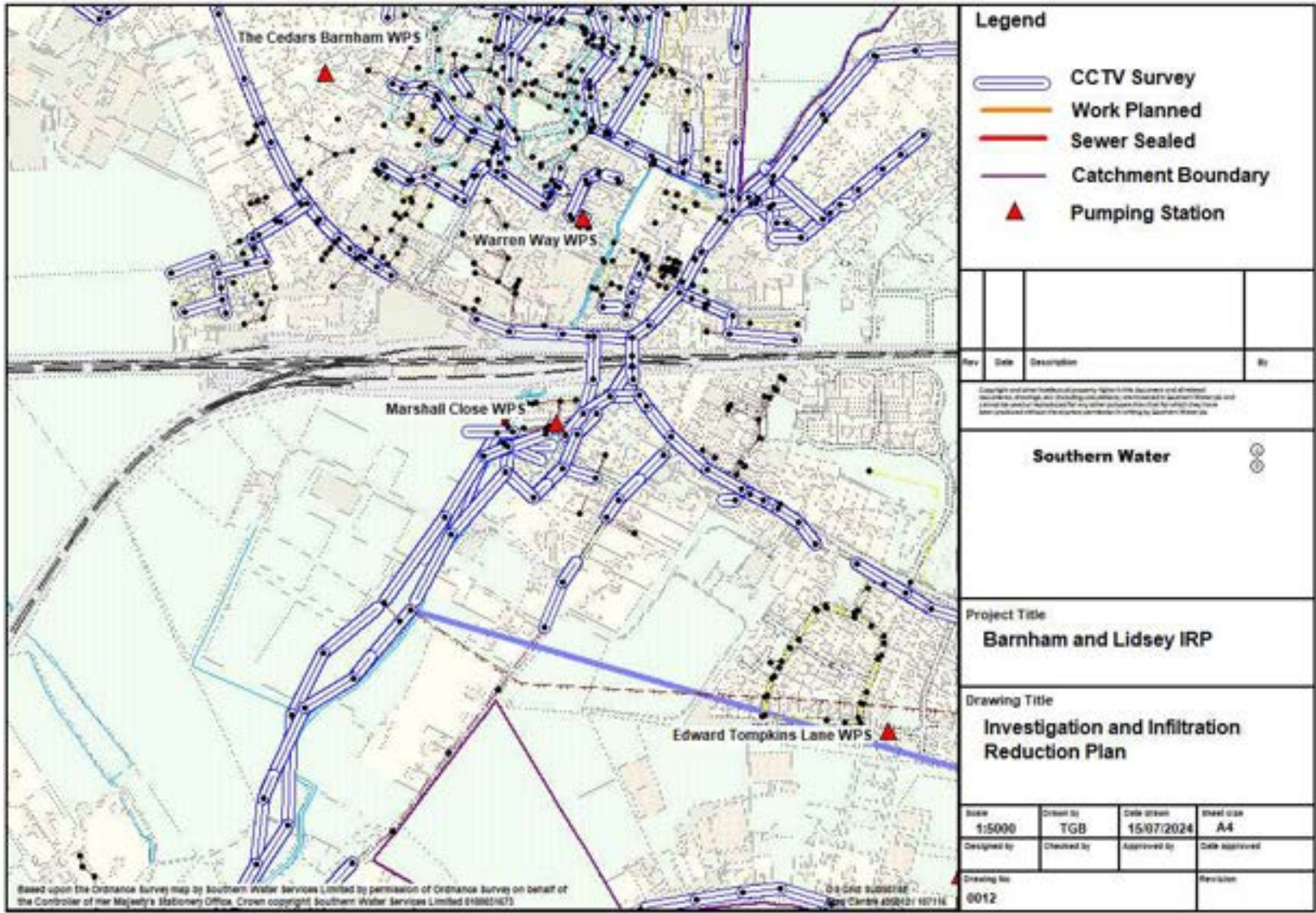


Note – sewers shown as surveyed by cctv or with no corresponding sealing work have been determined to not require rehabilitation. The use of storm harvester data will be used at some point in the future to target inspections and find infiltration





# Detailed plan 12

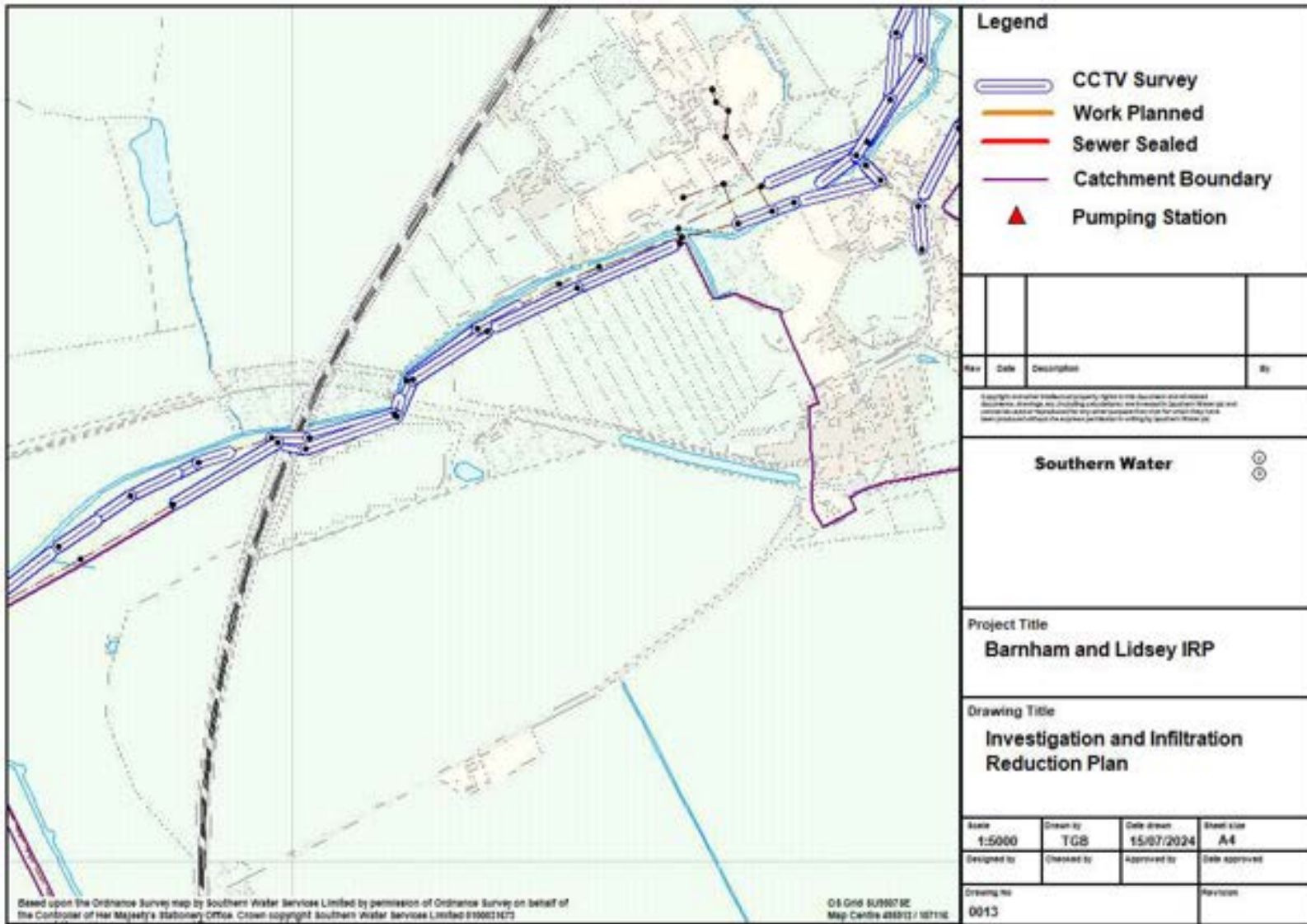


Note – sewers shown as surveyed by cctv or with no corresponding sealing work have been determined to not require rehabilitation. The use of storm harvester data will be used at some point in the future to target inspections and find infiltration





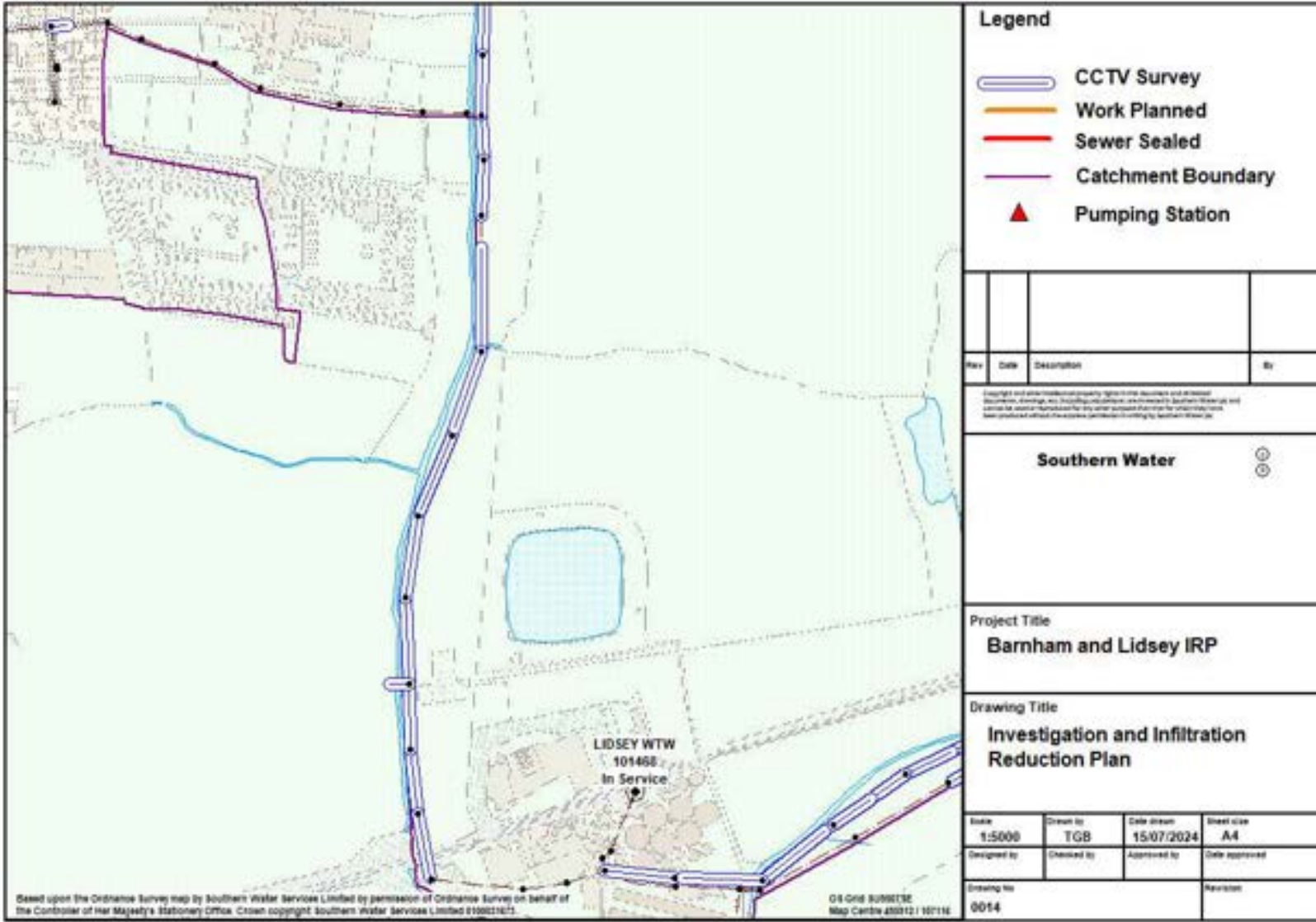
# Detailed plan 13



Note – sewers shown as surveyed by cctv or with no corresponding sealing work have been determined to not require rehabilitation. The use of storm harvester data will be used at some point in the future to target inspections and find infiltration



# Detailed plan 14

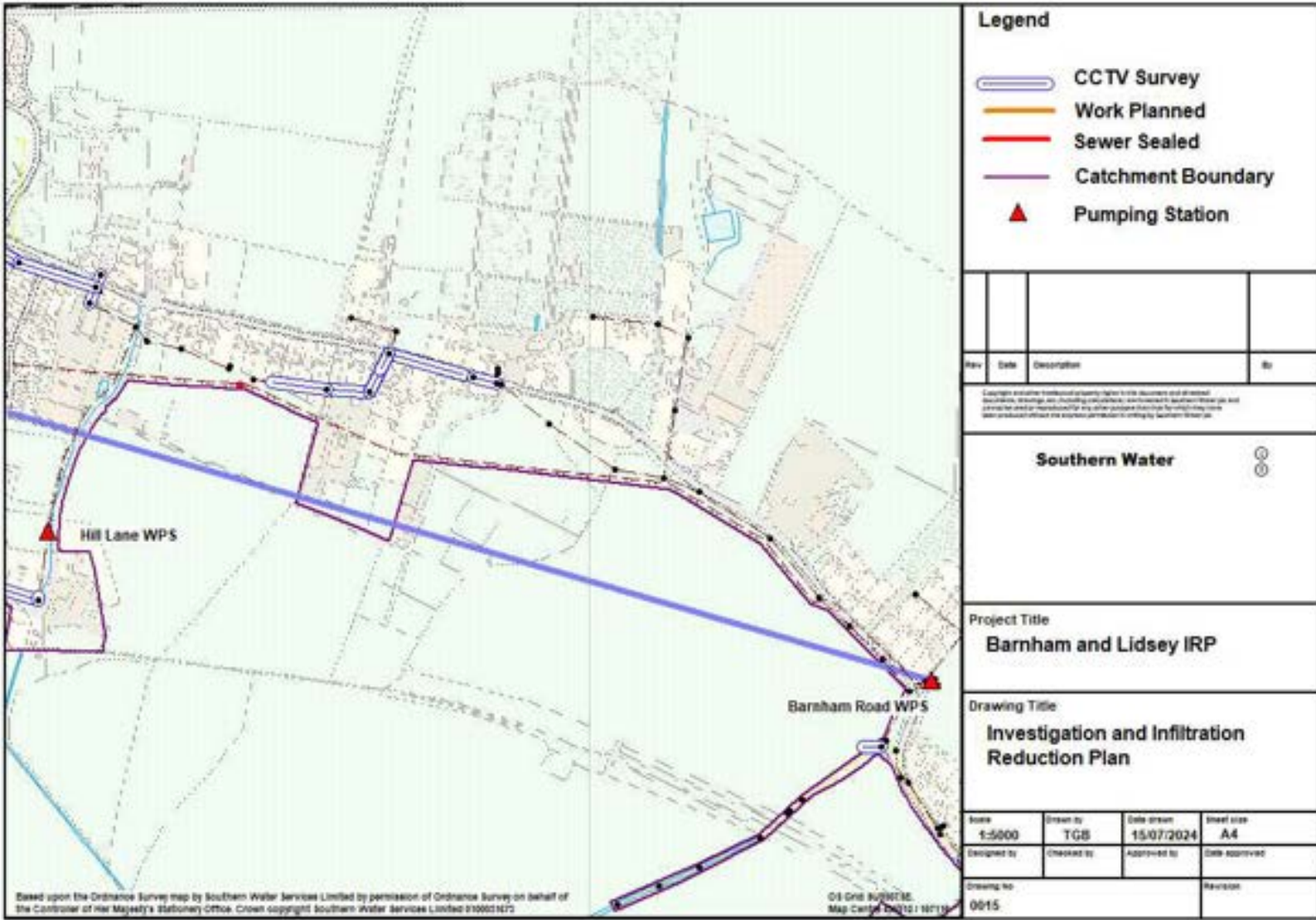


Note – sewers shown as surveyed by cctv or with no corresponding sealing work have been determined to not require rehabilitation. The use of storm harvester data will be used at some point in the future to target inspections and find infiltration





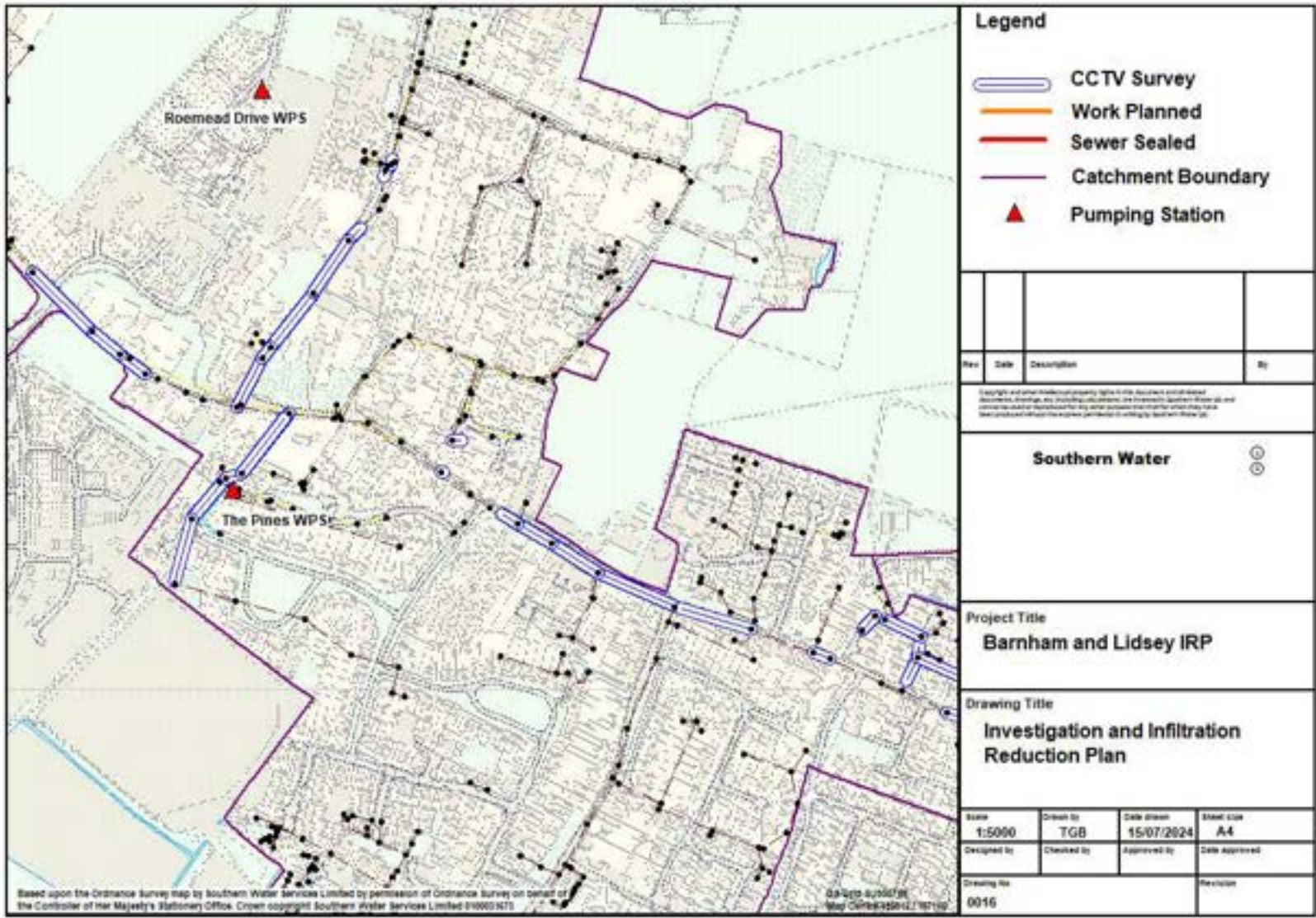
# Detailed plan 15



Note – sewers shown as surveyed by cctv or with no corresponding sealing work have been determined to not require rehabilitation. The use of storm harvester data will be used at some point in the future to target inspections and find infiltration



# Detailed plan 16

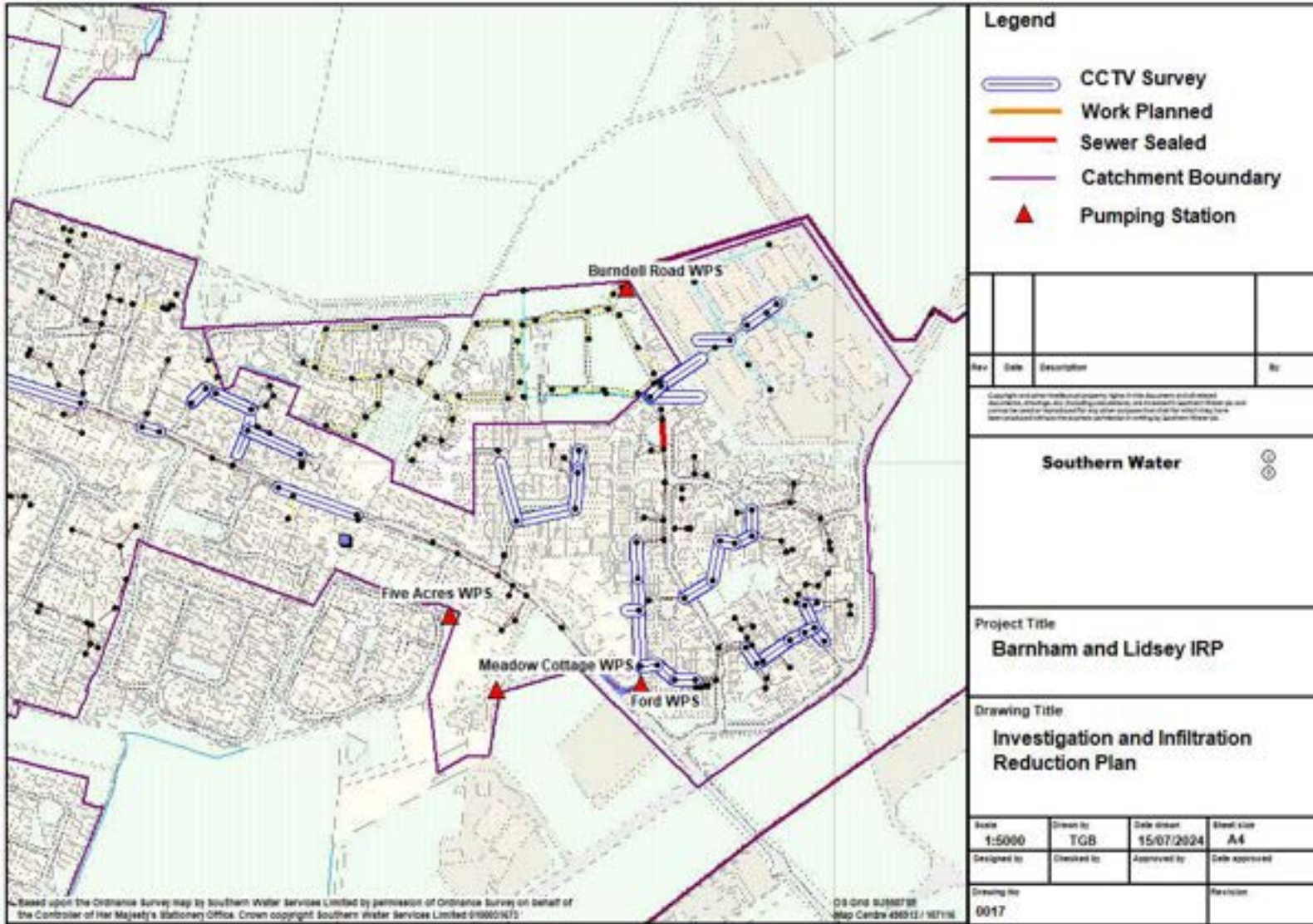


Note – sewers shown as surveyed by cctv or with no corresponding sealing work have been determined to not require rehabilitation. The use of storm harvester data will be used at some point in the future to target inspections and find infiltration





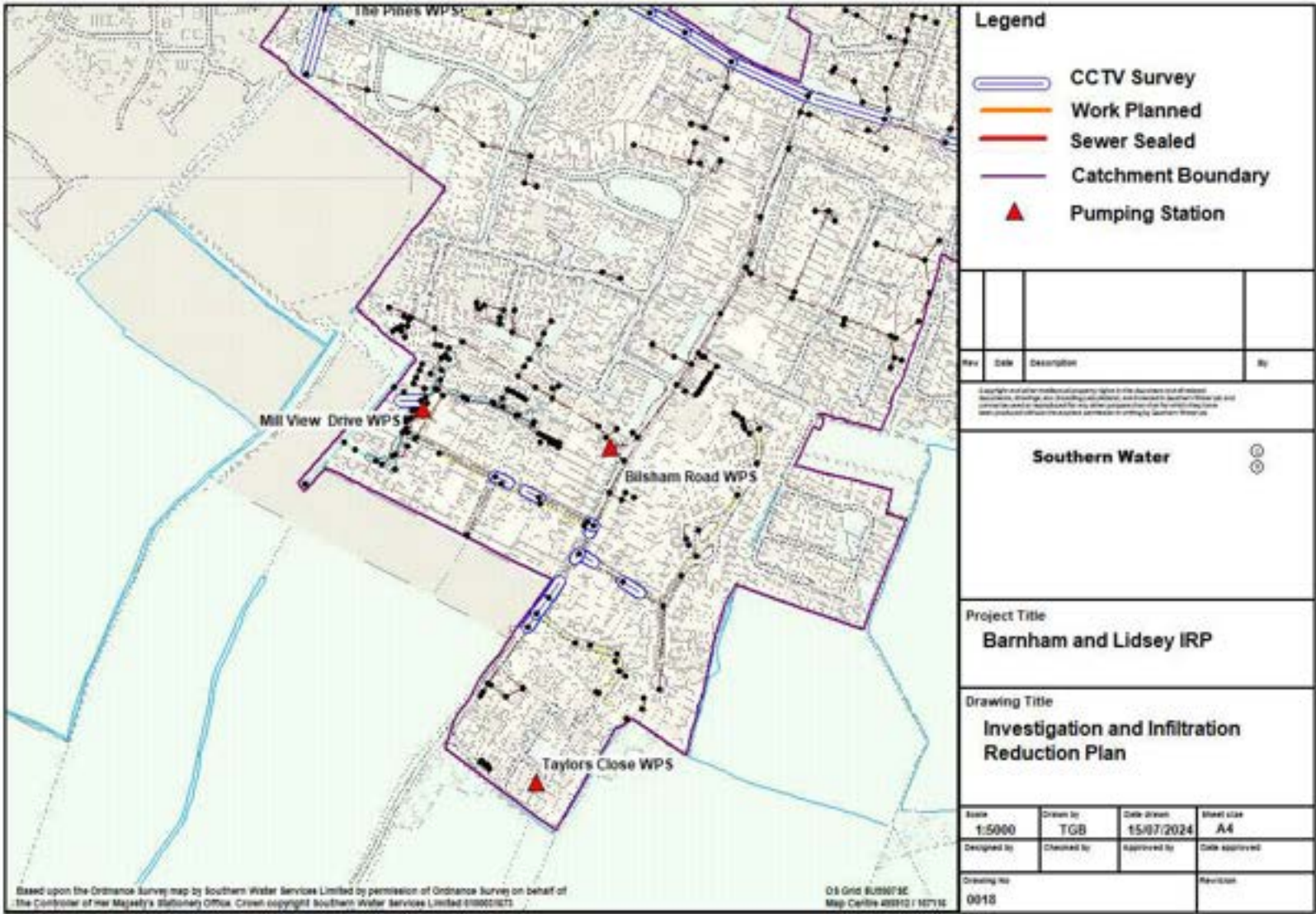
# Detailed plan 17



Note – sewers shown as surveyed by cctv or with no corresponding sealing work have been determined to not require rehabilitation. The use of storm harvester data will be used at some point in the future to target inspections and find infiltration



# Detailed plan 18

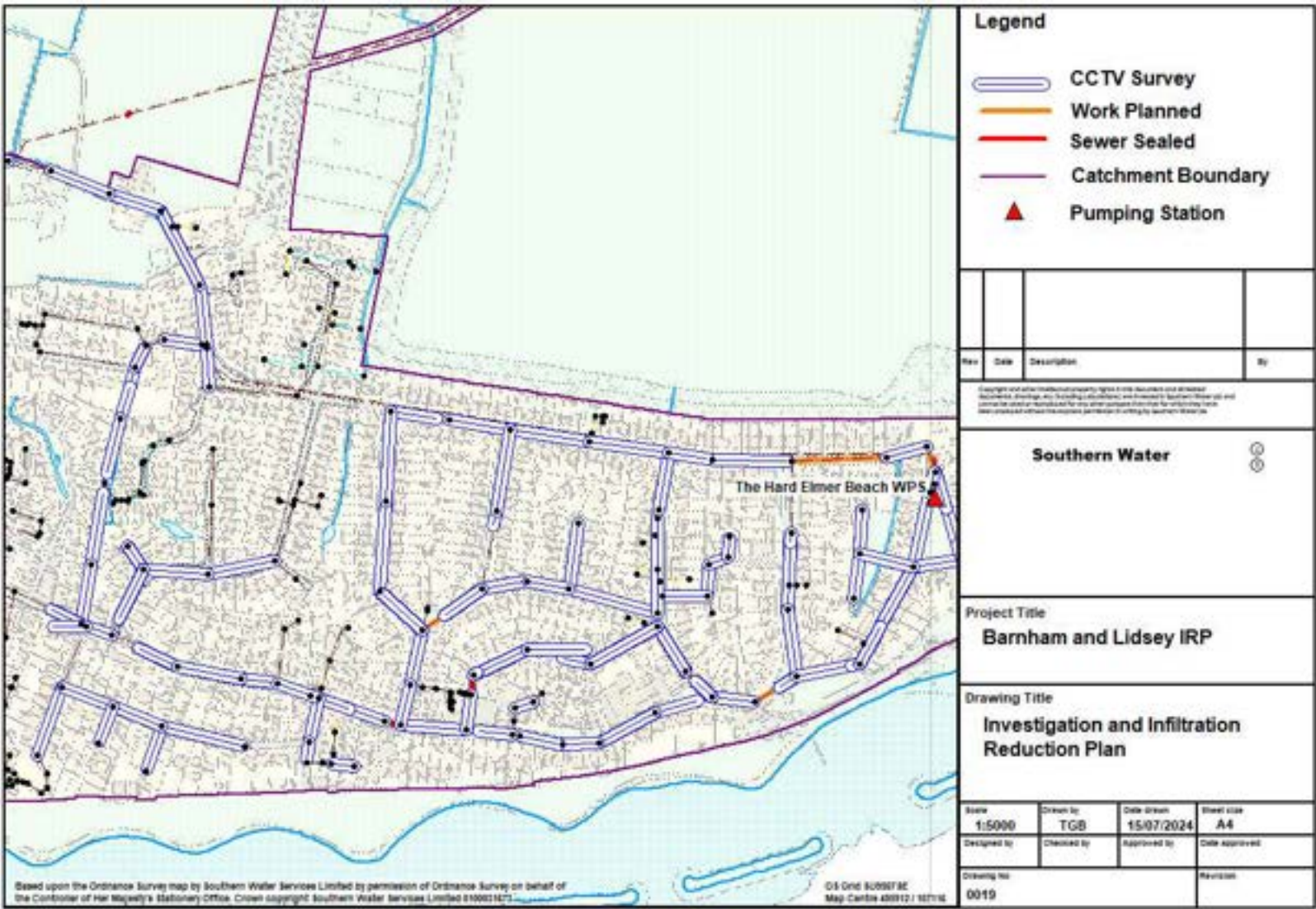


Note – sewers shown as surveyed by cctv or with no corresponding sealing work have been determined to not require rehabilitation. The use of storm harvester data will be used at some point in the future to target inspections and find infiltration





# Detailed plan 19

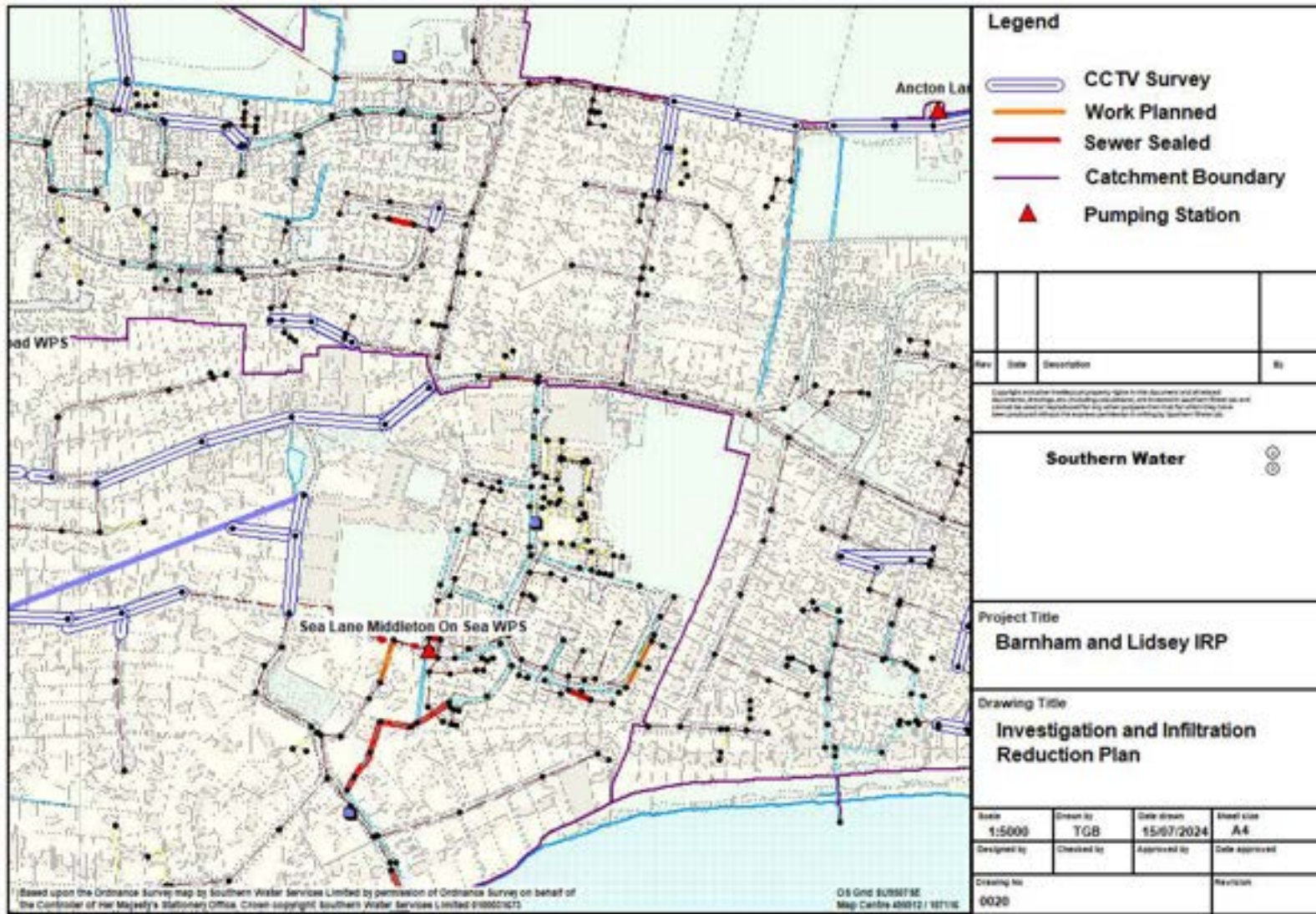


Note – sewers shown as surveyed by cctv or with no corresponding sealing work have been determined to not require rehabilitation. The use of storm harvester data will be used at some point in the future to target inspections and find infiltration





# Detailed plan 20



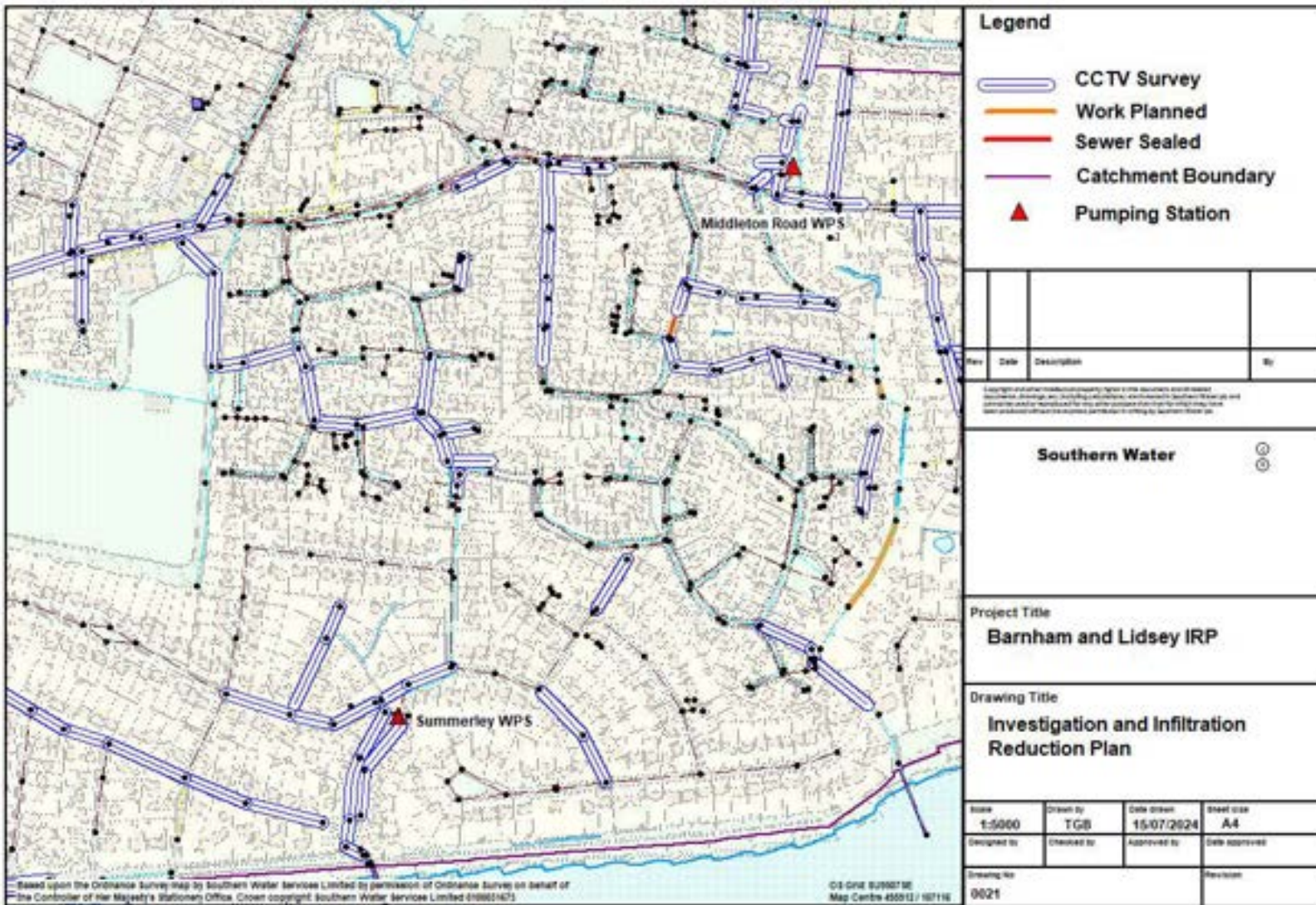
Note – sewers shown as surveyed by cctv or with no corresponding sealing work have been determined to not require rehabilitation. The use of storm harvester data will be used at some point in the future to target inspections and find infiltration





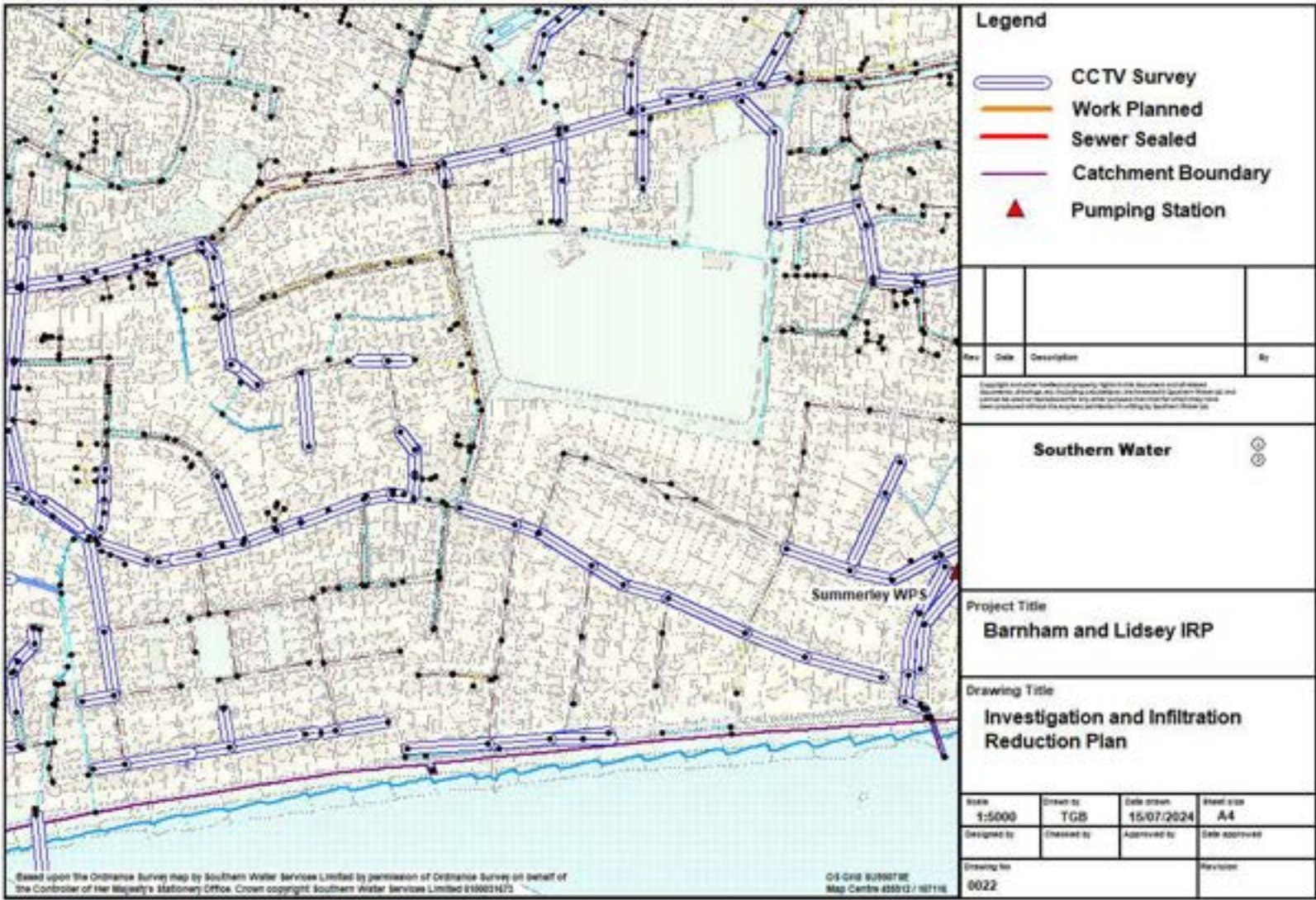
# Detailed plan 21

Note – sewers shown as surveyed by cctv or with no corresponding sealing work have been determined to not require rehabilitation. The use of storm harvester data will be used at some point in the future to target inspections and find infiltration





# Detailed plan 22

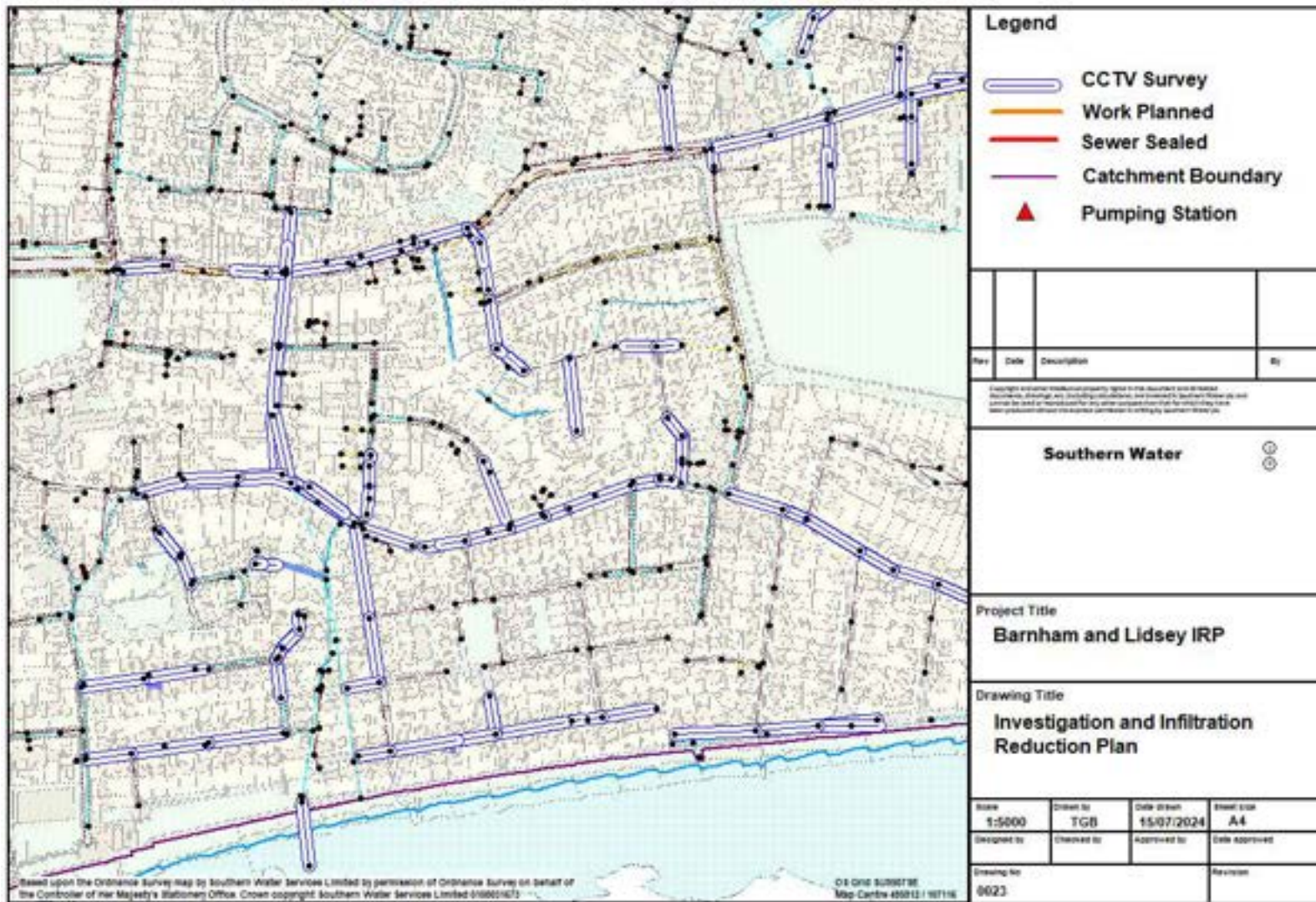


Note – sewers shown as surveyed by cctv or with no corresponding sealing work have been determined to not require rehabilitation. The use of storm harvester data will be used at some point in the future to target inspections and find infiltration





# Detailed plan 23

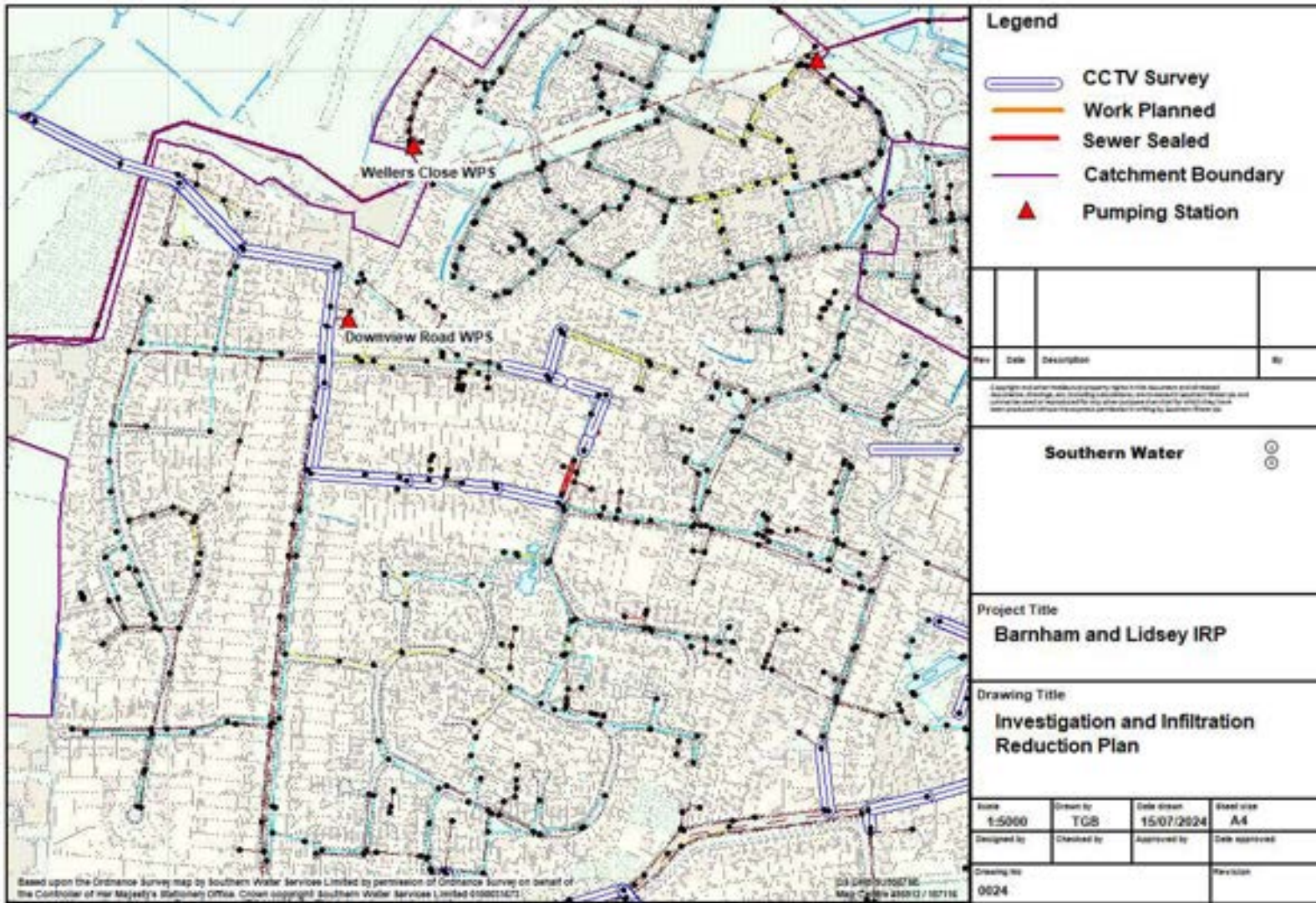


Note – sewers shown as surveyed by cctv or with no corresponding sealing work have been determined to not require rehabilitation. The use of storm harvester data will be used at some point in the future to target inspections and find infiltration





# Detailed plan 24

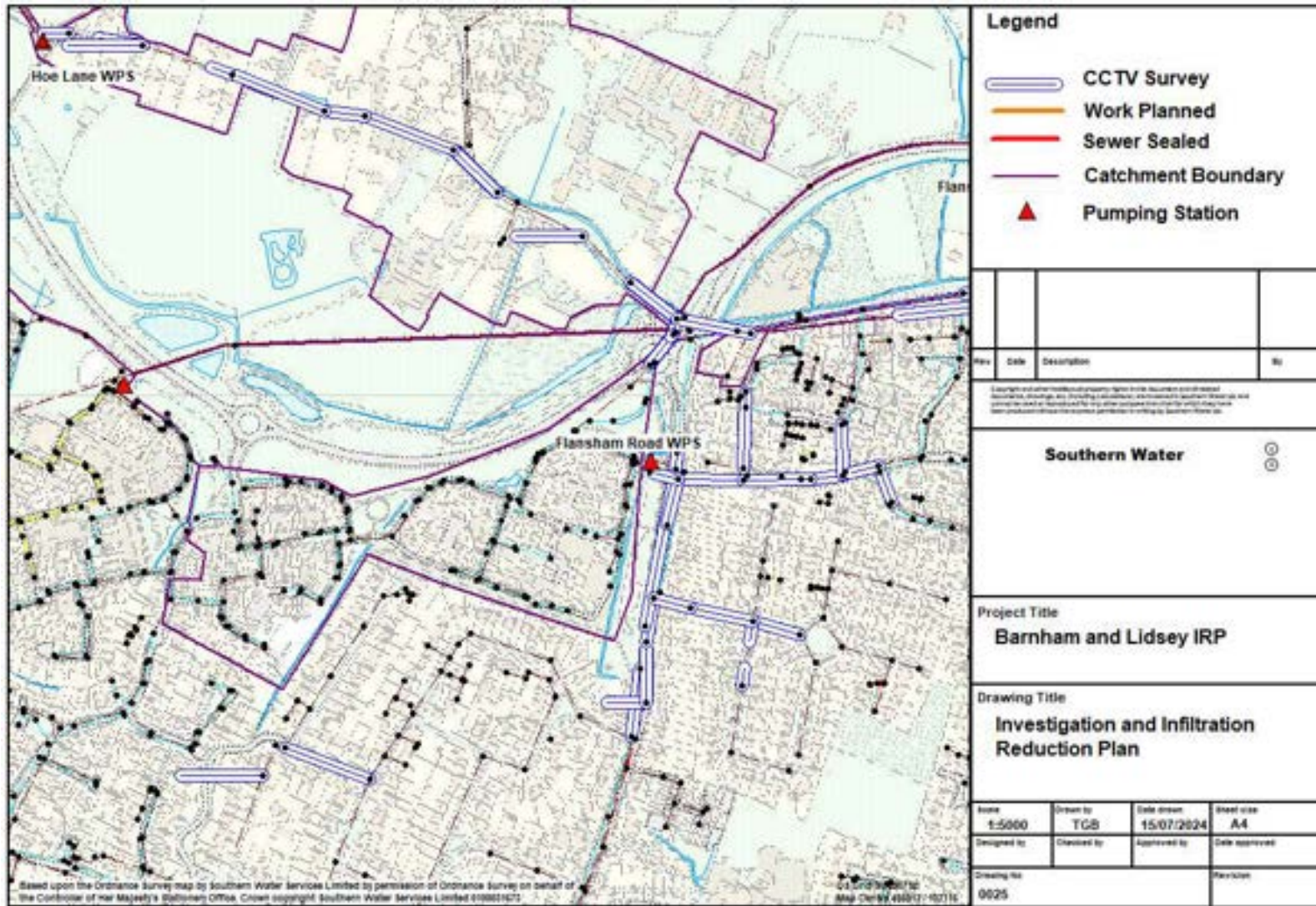


Note – sewers shown as surveyed by cctv or with no corresponding sealing work have been determined to not require rehabilitation. The use of storm harvester data will be used at some point in the future to target inspections and find infiltration





## Detailed plan 25



Note – sewers shown as surveyed by cctv or with no corresponding sealing work have been determined to not require rehabilitation. The use of storm harvester data will be used at some point in the future to target inspections and find infiltration

