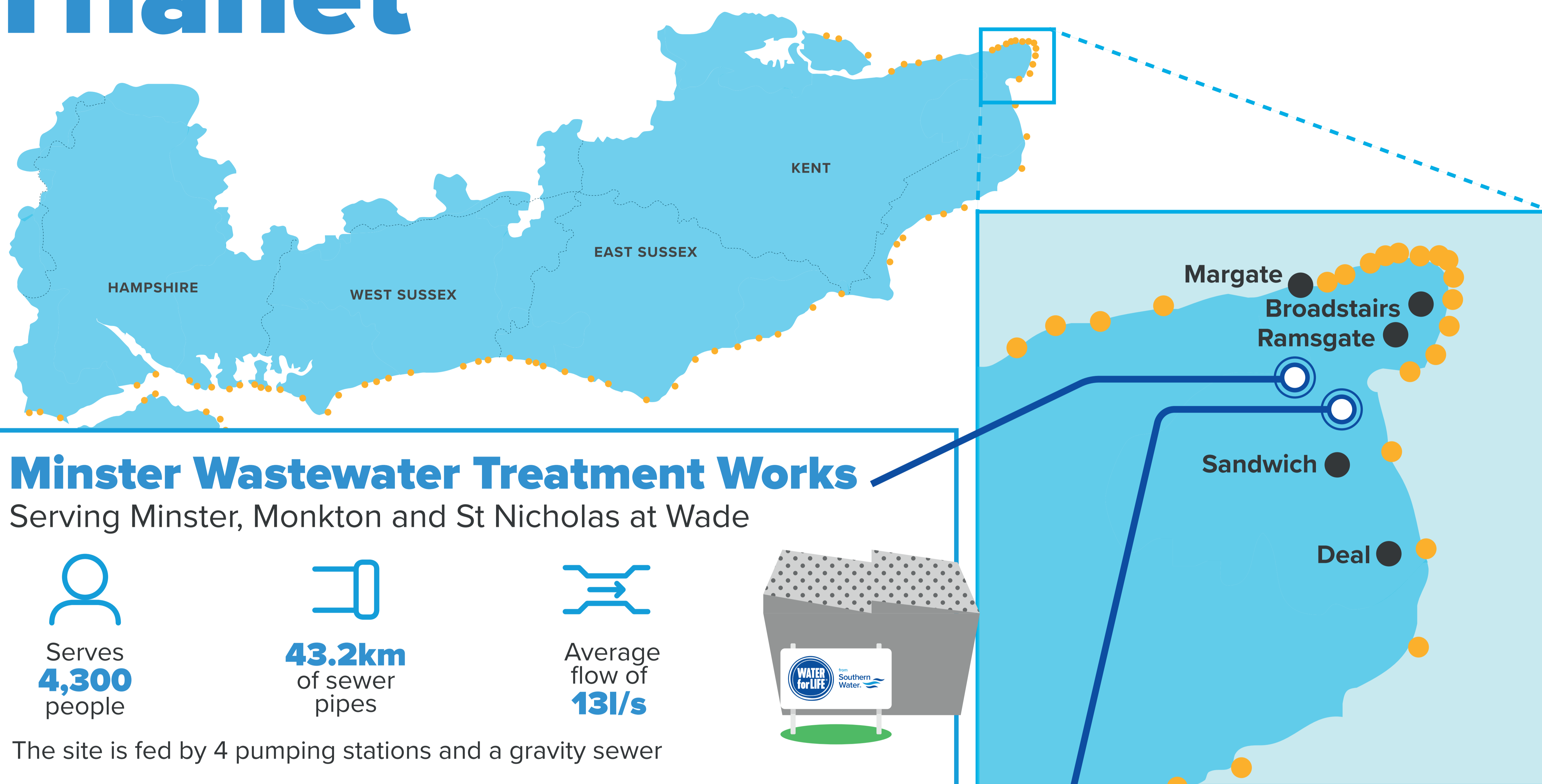


**WATER  
for LIFE**

from  
**Southern  
Water**

# Wastewater Treatment in Thanet

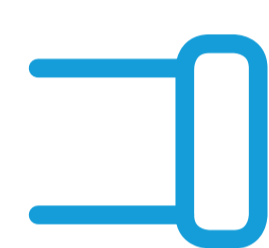


## Minster Wastewater Treatment Works

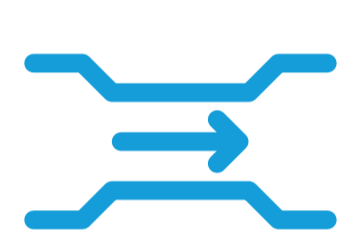
Serving Minster, Monkton and St Nicholas at Wade



Serves **4,300** people



**43.2km** of sewer pipes



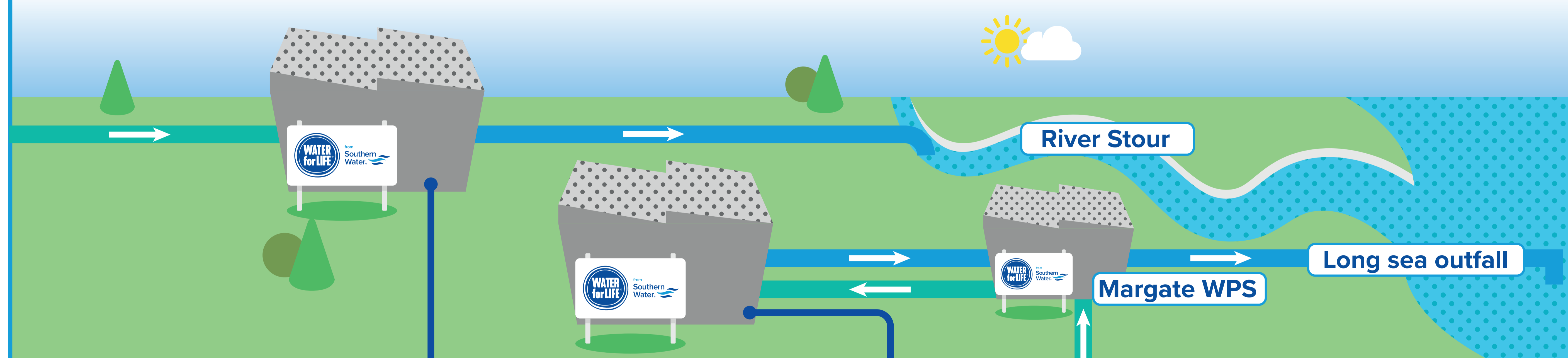
Average flow of **13l/s**



The site is fed by 4 pumping stations and a gravity sewer

## Weatherlees Hill Wastewater Treatment Works

The works serves more than 180,000 people across Margate, Broadstairs, Ramsgate, Sandwich and Deal, split into two sister sites which run side by side.

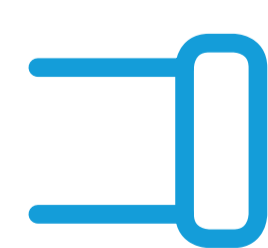


### Weatherlees Hill 'A'

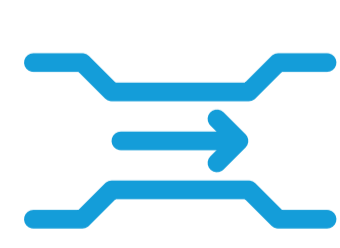
Serving Ramsgate, Sandwich and Deal



Serves **99,000** people



**643km** of sewer pipes



Takes flows up to **890l/s**

Treated effluent is released to the tidal River Stour which flows into Pegwell Bay.

### Weatherlees Hill 'B'

Serving Margate and Broadstairs



Serves **93,000** people



**607km** of sewer pipes



Takes flows up to **809l/s**

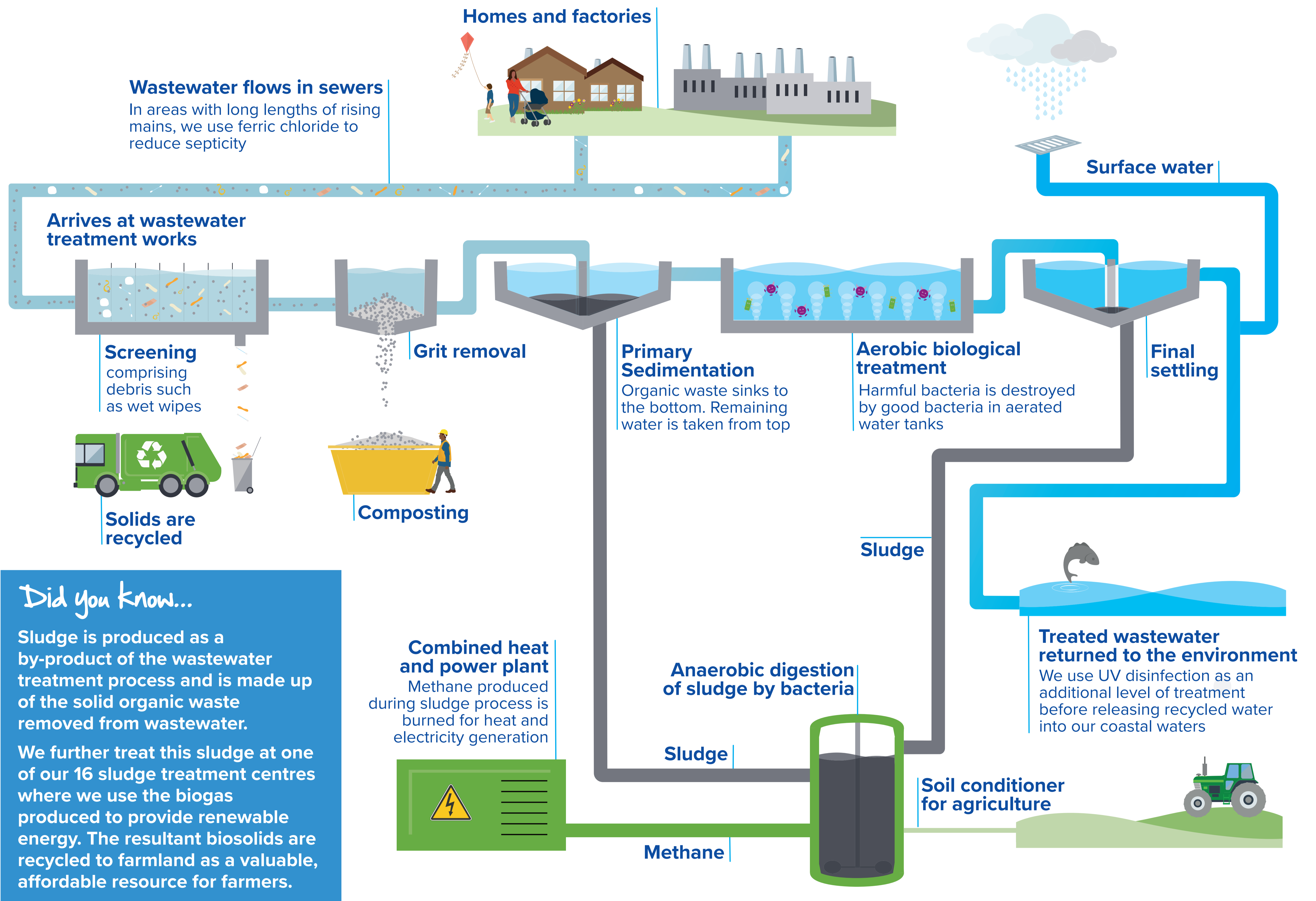
Primary treatment and grit removal is undertaken at Margate Wastewater Pumping Station (WPS), 11km away. Wastewater undergoes additional UV disinfection before being pumped back to Margate WPS and released via the long sea outfall.



# Wastewater Treatment Process



from  
Southern  
Water



**Did you know...**  
Sludge is produced as a by-product of the wastewater treatment process and is made up of the solid organic waste removed from wastewater. We further treat this sludge at one of our 16 sludge treatment centres where we use the biogas produced to provide renewable energy. The resultant biosolids are recycled to farmland as a valuable, affordable resource for farmers.

**Did you know...**  
The Environment Agency (EA) sets limits on the quality and quantity of recycled water that can be released from our treatment works. The EA issues discharge permits to ensure the recycled water we release meets legal requirements. The permit ensure that the quality of the receiving water is protected and that discharges do not cause an unacceptable impact on the environment.

## Bin it, don't flush it!

**x8**

Every month we remove **EIGHT** skips of unflushable items from our sites at Weatherlees Hill and Margate

**64**

This includes approximately **64 TONNES** of wipes and sanitary items that should be disposed of in the bin

Remember the 3ps

Only flush toilet paper, pee and poo down the loo.

5883\_4.22