



Problem Characterisation

Horsham New (HONE)

This document describes the causes of the risks identified by the Baseline Risk and Vulnerability Assessment (BRAVA). The BRAVA results for this wastewater system are summarised in Table 1. The results indicate that flooding, pollution and water quality are the main concerns in this wastewater system. We have completed risk assessments for 2050 where we have the data and tools available to do so. For the other planning objectives, we will explore how we can predict future risks for the next cycle of DWMPs. All the risk assessment methods need to be reviewed after the first DWMPs have been produced with a view to improve the methods and data for future planning cycles.

Table 1: Results of the BRAVA for Horsham New wastewater system

Planning Objectives		2020	Driver	2050
1	Internal Sewer Flooding Risk	0	-	
2	Pollution Risk	1	Customer	
3	Sewer Collapse Risk	0	-	
4	Sewer Flooding in a 1 in 50-year storm	2	Hydraulic	2
5	Storm Overflow Performance	1	Hydraulic	1
6	WTW Water Quality Compliance	1	Quality	1
7	Flooding due to Hydraulic Overload	1	Hydraulic	2
8	WTW Dry Weather Flow Compliance	0	-	0
9	Good Ecological Status / Good Ecological Potential	1	Quality	
10	Surface Water Management	2	Hydraulic	
11	Nutrient Neutrality	2	Unknown	2
12	Groundwater Pollution	0	-	
13	Bathing Waters	NA	-	
14	Shellfish Waters	NA	-	

Key

BRAVA Risk Band	
NA	Not Applicable*
0	Not Significant
1	Moderately Significant
2	Very Significant

*No issues relevant to planning objective within Wastewater System

Investment Strategy

The risks identified in this wastewater system mean that we have assigned the following investment strategy:

Improve

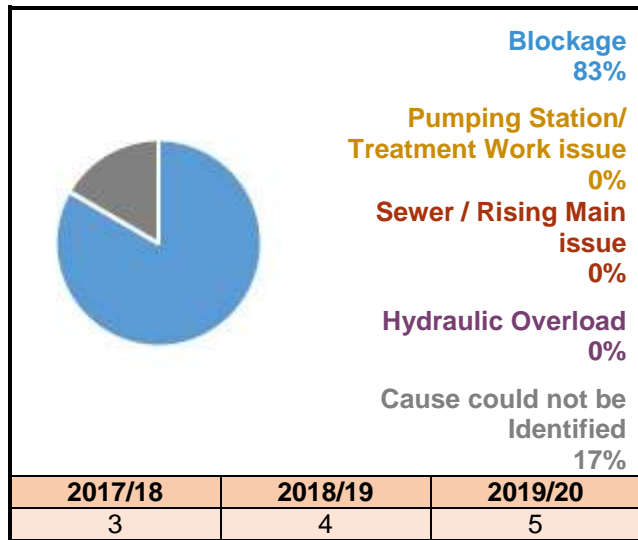
This means that we consider that the current performance of the drainage and wastewater system needs to be improved to reduce the impacts on our customers and/or the environment. We will plan investment to reduce the current risks by actively looking to invest capital funding in the short term to address current performance issues (and consider future risks when implementing improvements).



Planning Objective 1: Internal Sewer Flooding Risk

The number of internal sewer flooding incidents reported during the three years considered by the risk assessment are shown in Figure 1. The total number of connections in this wastewater system means there have been less than 1.68 incidents per 10,000 connections per year (a threshold set by Ofwat) so the risk is in the 'not significant' band.

Figure 1: Number of internal flooding incidents per annum and causes

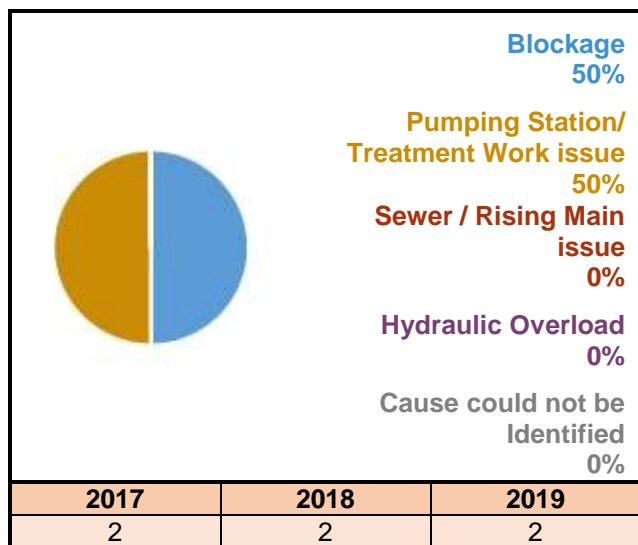


Planning Objective 2: Pollution Risk

The number of pollution incidents reported during the three years considered by the risk assessment are shown in Figure 2. The length of sewer in this wastewater system means there have been between 24.51 and 49.01 incidents per 10,000km per year (a threshold set by Ofwat) so the risk is in the 'moderately significant' band.

The primary driver for pollution is 'Customer'. Blockages caused 50% of all incidents recorded in this wastewater system. Blockages are often caused by fats, oils, grease, nappies, wet wipes and sanitary products within the system. These items are non-flushable and should not be disposed of into wastewater systems.

Figure 2: Number of pollution incidents per annum and causes



Planning Objective 3: Sewer Collapse Risk

The number of sewer collapses reported during the three years considered by the risk assessment are shown in Table 2. The length of sewer in this wastewater system means there have been less than 5.72 incidents per 1,000km per year (a threshold set by Ofwat) so the risk is in the 'not significant' band.

Table 2: Sewer collapses and rising main bursts

Sewer Collapse	2017/18	1
	2018/19	1
	2019/20	0
Rising Main Bursts	2017/18	0
	2018/19	0
	2019/20	1

Planning Objective 4: Sewer Flooding in a 1 in 50 Year Storm

The risk of flooding in a 1 in 50 year storm is very significant in 2020 and 2050. This is because our computer model of the sewer network indicate for 2020 that approximately 2200 - 2300 properties within this wastewater system are in areas that could flood by water escaping from sewers. This model prediction increases the number of properties in areas at risk from flooding to approximately 3200 - 3300 by 2050.

Our wastewater networks are generally designed with capacity for up to a 1 in 30 year storm, hence flooding is expected to occur during more severe storms such as a 1 in 50 year event. Flooding will occur due to insufficient capacity of the drainage system either on the surface before it enters the drainage system, and/or from manholes, in people's homes or at a low point elsewhere in the system.

Planning Objective 5: Storm Overflow Performance

The storm overflow performance risk has been assessed as moderately significant in 2020 and 2050. Table 3 shows the overflows that discharge above the low threshold set for storm overflow discharges to Shellfish Water, Bathing Water and inland rivers.

The primary driver for the Storm Overflow Performance is 'Hydraulic.'

Table 3: Overflows exceeding discharge frequency threshold per annum

	Number of overflows		Threshold for number of discharges per annum		
	2020	2050	Low	Medium	High
Shellfish Waters	0 Medium	0 Medium	Less than 8	Between 8-10	10 or more
Bathing Waters	0 Medium	0 Medium	Less than 3	Between 3-10	10 or more
Freshwater	1 Medium	1 Medium	Less than 20	Between 20-40	40 or more

Planning Objective 6: Wastewater Treatment Works Water Quality Compliance

The risk of non-compliance with our wastewater quality permit has been assessed as moderately significant for both 2020 and 2050. This is because the compliance status of the wastewater treatment works in 2019 and 2020 was Sub Critical and Critical respectively. Future forecast growth for 2050 was assessed to not have an adverse affect for the risk score.

Planning Objective 7: Flooding due to Hydraulic Overload

This is an assessment of the risk of flooding from sewers during a 1 in 30 year storm, and more frequent rainfall, to understand where flooding could occur. The risk of sewer flooding due to hydraulic overload is moderately significant in 2020. The risk The annualised number of properties in areas at risk of flooding is shown in Table 4.

Table 4: Annualised number of properties at risk per 10,000 connections.

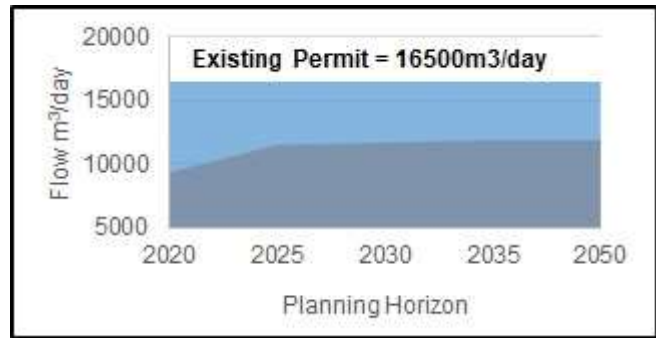
Rainfall Return Period (yr)	Number of Properties at Risk		Annualised per 10,000 connections	
	2020	2050	2020	2050
1 in 1	108	291	68	184
1 in 2	139	454	55	179
1 in 5	641	1161	116	210
1 in 10	1130	1754	108	167
1 in 20	1503	2338	73	114
1 in 30	1809	2645	59	87
Total Annualised			479	941

This indicates that the existing capacity of the wastewater network can be exceeded during 1 in 30 year storms (or more frequent events), and that the risk will increase due to future growth, creep and/or climate change by 2050.

Planning Objective 8: Wastewater Treatment Works Dry Weather Flow Compliance

The risk of Wastewater Treatment Works Dry Weather Flow (DWF) Compliance is not significant for both 2020 and 2050. This is because the average annual DWF for 2017, 2018 and 2019 has been below 80% of the current permit. The predicted DWF in 2050 is also expected to remain below 80% of the current permit, shown in Figure 3.

Figure 3: Recorded and predicted dry weather flow with existing permit



Planning Objective 9: Good Ecological Status / Good Ecological Potential

Table 5 shows the waterbodies connected to this wastewater system are not achieving Good Ecological Status or Potential (GES/GEP). The Environment Agency has attributed the 'reasons for not achieving good status' to water company operations. Our risk assessment has been assessed based on the worst assigned status (Poor) and is moderately significant. This is because we are might not be complying with our permit from the Environment Agency, or the permits need to be tightened to reduce the risk.

The primary driver is 'Quality'.

Table 5: Waterbodies not achieving GES/GEP

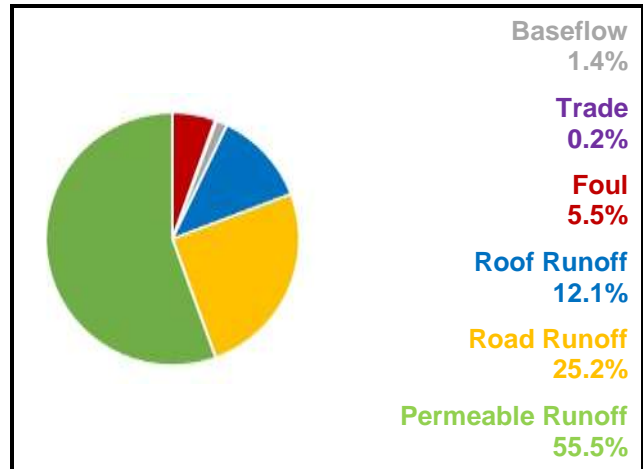
Waterbody	Classification	EA-Status	Activity
Arun Source	Phosphate	Moderate	Sewage discharge (continuous)
Boldings Brook	Phosphate	Moderate	Sewage discharge (continuous)
Arun Horsham	Invertebrates	Moderate	Sewage discharge (continuous)
Arun Horsham	Macrophytes and Phytobenthos Combined	Poor	Sewage discharge (continuous)

Planning Objective 10: Surface Water Management

Our initial high level assessment indicated that there is very significant interaction between surface water flooding and flooding from sewers in this wastewater system. The cause of this localised flooding is the capacity of the drainage network in these areas to convey both wastewater and surface water run-off.

Figure 4 illustrates the sources of water flowing in the wastewater system during a 1 in 20 year storm. It shows that surface water runoff from roofs, road and permeable surfaces constitutes more than 92.8% of the flow in the sewers. The total contribution of foul water from homes is 5.5% with business contributing 0.2%. The baseflow is infiltration from water in the ground and makes up 1.4% of the flow in the system.

Figure 4: Sources of water flowing in sewers during a 1 in 20 year storm



Planning Objective 11: Nutrient Neutrality

The risk to internationally designated habitat sites from this wastewater system is very significant in 2020 and 2050. This is because Natural England have advised that there is a risk to condition for the habitat sites that are hydraulically linked to our wastewater system, listed in Table 6.

Table 6: Habitat Sites hydraulically linked to wastewater system

Habitat Sites	
Arun Valley	Nitrate permit review required Overflow Spills

Planning Objective 12: Groundwater Pollution

The risk of Groundwater Pollution is not significant. This is because the wastewater network in this wastewater system does not overlap with any groundwater Source Protection Zones (SPZ) used for water supply.

Planning Objective 13: Bathing Waters

This wastewater system does not discharge into a designated bathing water.

Planning Objective 14: Shellfish Waters

The discharges from this wastewater system do not impact on any designated shellfish waters.

Southern Water

August 2021
Version 1